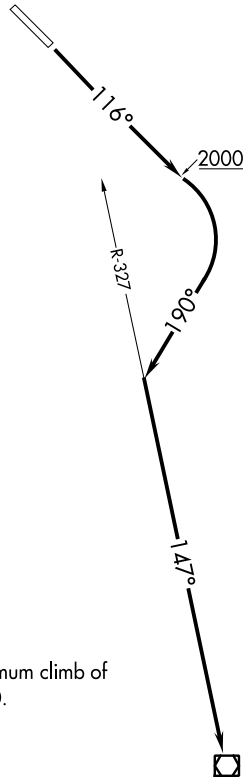


ANCHORAGE CENTER
118.5 284.6
KETCHIKAN RADIO
121.5
CTAF
123.6



TAKEOFF MINIMUMS

Rwy 11: Standard with a minimum climb of 360' per NM to 2000.
Rwy 29: NA - ATC.

TAKEOFF OBSTACLE NOTES

- Rwy 11: Electrical system 5' from DER, 55' left of centerline, 1' AGL/90' MSL.
 - Electrical system 5' from DER, 54' right of centerline, 1' AGL/90' MSL.
 - Tree 107' from DER, 514' left of centerline, 93' MSL.
 - Tree 190' from DER, 508' left of centerline, 76' AGL/95' MSL.
 - Tree 483' from DER, 572' right of centerline, 126' MSL.
 - Trees 966' from DER, 692' right of centerline, 128' MSL.
 - Tree 1072' from DER, 693' right of centerline, 144' MSL.
 - Trees beginning 1195' from DER, 659' right of centerline, up to 154' MSL.
 - Tree 2469' from DER, 1001' right of centerline, 164' MSL.
 - Tree 2567' from DER, 1060' right of centerline, 168' MSL.
 - Trees beginning 2768' from DER, 1014' right of centerline, up to 173' MSL.
- NOTE: Chart not to scale.

DEPARTURE ROUTE DESCRIPTION

TAKEOFF RUNWAY 11: Climb heading 116° to 2000, then climbing right turn to 5000 on heading 190° to intercept ANN VOR/DME R-327 to ANN VOR/DME before proceeding on course.

AK, 15 AUG 2019 to 10 OCT 2019

AK, 15 AUG 2019 to 10 OCT 2019