

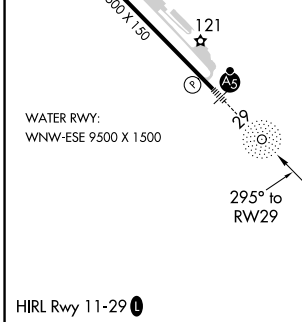
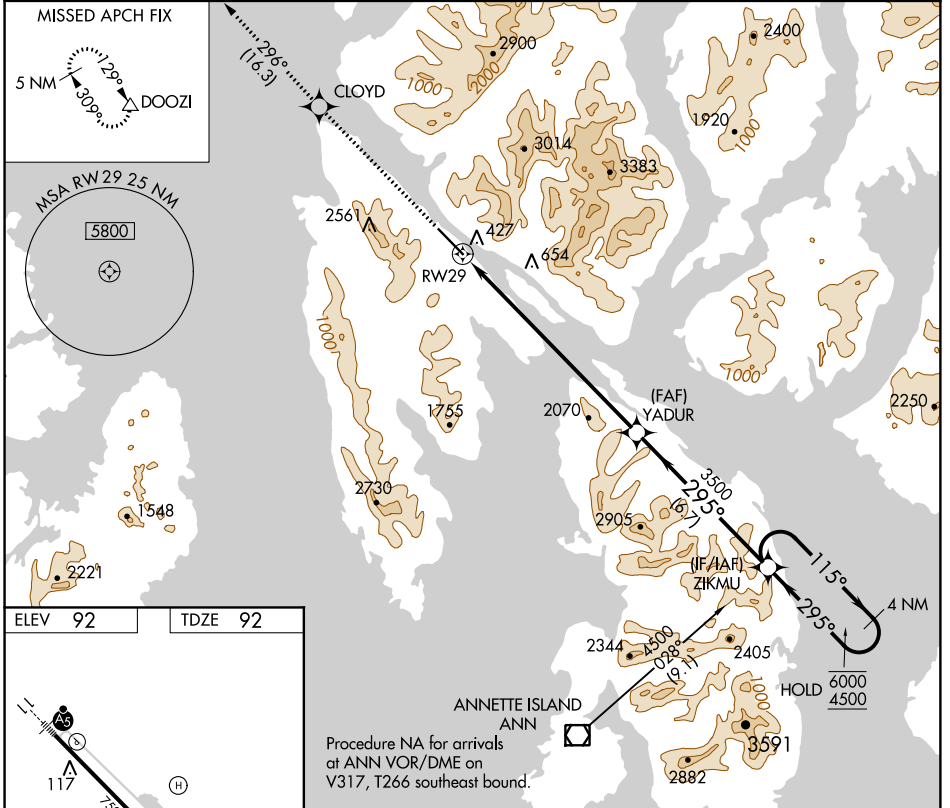
WAAS CH <b>40142</b> <b>W29A</b>	APP CRS <b>295°</b>	Rwy Idg TDZE Apt Elev	<b>7500</b> <b>92</b> <b>92</b>
--	------------------------	-----------------------------	---------------------------------------

# RNAV (GPS) RWY 29

KETCHIKAN INTL (KTN)(PAKT)

RNP APCH.	MALSR 	MISSED APPROACH: Climb to 5000 direct CLOYD and on track 296° to DOOZI and hold. *Missed approach requires minimum climb of 425 feet per NM to 2160; If unable to meet climb gradient, see RNAV (GPS)-B.
NA For inop ALS, increase all Cats visibility to 1 3/4 SM.		

AFIS <b>134.45</b>	ANCHORAGE CENTER <b>118.5 284.6</b>	KETCHIKAN RADIO <b>123.6 (CTAF) 0</b>
-----------------------	--	--



5000	CLOYD	tr 296°	DOOZI	VGSI and RNAV glidepath not coincident (VGSI Angle 3.00/TCH 49).	4 NM Holding Pattern
	YADUR		ZIKMU		
	3500	295°	115° → 6000		← 295° 4500
	RW29				GP 3.55°
		3500			TCH 50
		8.9 NM	6.7 NM		
CATEGORY	A	B	C	D	
LPV DA*	722-1 3/8			630 (700-1 3/8)	NA

AK, 15 AUG 2019 to 10 OCT 2019

AK, 15 AUG 2019 to 10 OCT 2019