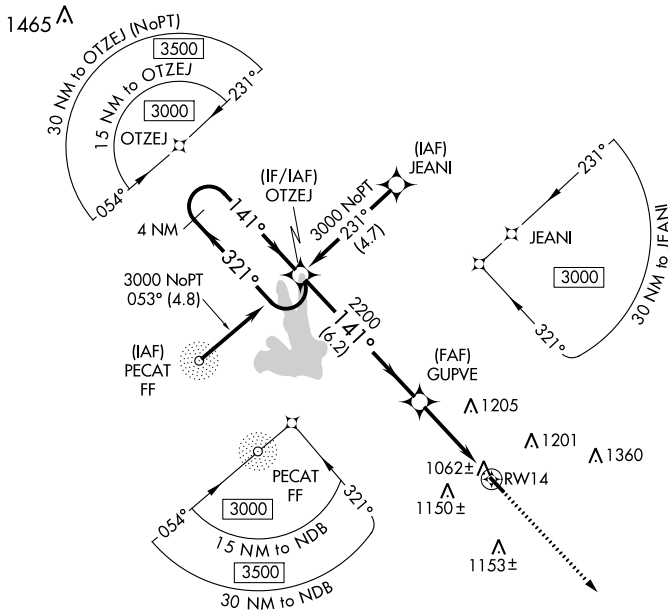


WAAS CH 70429 W14A	APP CRS 141°	Rwy Idg TDZE Apt Elev	3201 958 958
--	------------------------	-----------------------------	---

RNAV (GPS) RWY 14

GRIFFIN-SPALDING COUNTY (6A2)

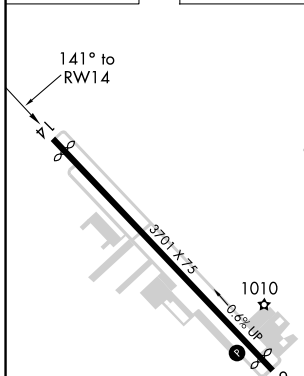
RNP APCH.		When local altimeter setting not received, use Atlanta Rgnl Falcon Field altimeter setting and increase all MDA 60 feet. Rwy 14 helicopter visibility reduction below 1 SM NA. Procedure NA at night.		MISSED APPROACH: Climb to 3000 direct LUFEV and hold.	
AWOS-3 119.750	ATLANTA APP CON 128.575 343.675	CLNC DEL 128.575 343.675	UNICOM 123.075 (CTAF) 0		



SE-4, 12 SEP 2019 to 10 OCT 2019

SE-4, 12 SEP 2019 to 10 OCT 2019

ELEV 958	D	TDZE 958
----------	----------	----------



4 NM Holding Pattern	OTZEJ	Visual Segment - Obstacles.	3000	LUFEV
3000	← 321°	→ 141°	GUPVE	2200
			6.2 NM	3.8 NM
			RWY 14	

CATEGORY	A	B	C	D
LP MDA	1320-1	362 (400-1)	NA	
LNAV MDA	1400-1	442 (500-1)	NA	

REIL Rwy 14 and 32
MIRL Rwy 14-32 0