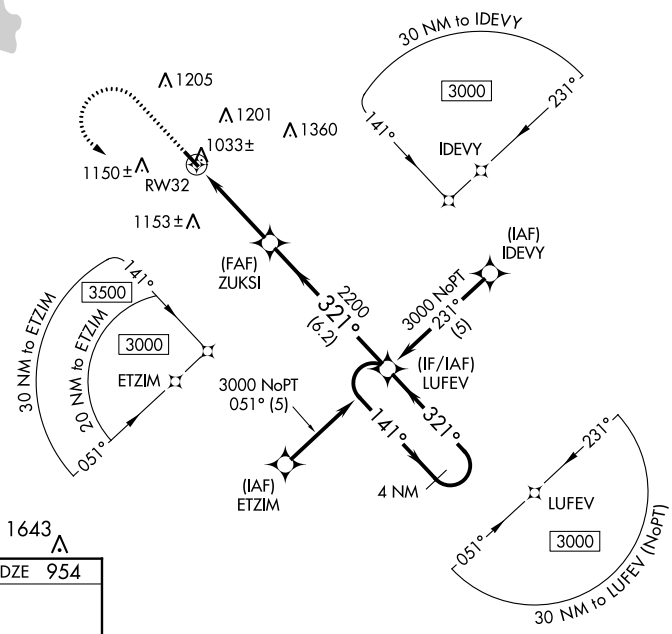


WAAS CH <b>65729</b> <b>W32A</b>	APP CRS <b>321°</b>	Rwy Idg TDZE Apt Elev	<b>3273</b> <b>954</b> <b>958</b>
--	------------------------	-----------------------------	---

# RNAV (GPS) RWY 32

GRIFFIN-SPALDING COUNTY (6A2)

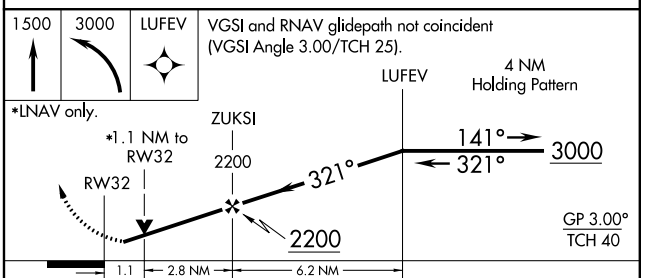
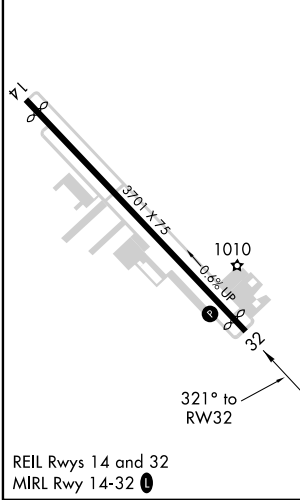
RNP APCH.		MISSED APPROACH: Climb to 1500 then climbing left turn to 3000 direct LUFEV and hold.	
<p>▼ ▲ NA</p> <p>For uncompensated Baro-VNAV systems, LNAV/VNAV NA below -16°C or above 54°C. Rwy 32 helicopter visibility reduction below 3/4 SM NA. Baro-VNAV and VDP NA with Atlanta Rgnl Falcon Field altimeter setting. When local altimeter setting not received, use Atlanta Rgnl Falcon Field altimeter setting and increase all DA/MDA 60 feet; increase LPV and LNAV/VNAV all Cats visibility 1/8 mile.</p>			
AWOS-3 <b>119.750</b>	ATLANTA APP CON <b>128.575 343.675</b>	CLNC DEL <b>128.575 343.675</b>	UNICOM <b>123.075 (CTAF) 0</b>



SE-4, 12 SEP 2019 to 10 OCT 2019

SE-4, 12 SEP 2019 to 10 OCT 2019

ELEV 958	<b>D</b>	TDZE 954
----------	----------	----------



CATEGORY	A	B	C	D
LPV DA	1204-7/8	250 (300-7/8)		NA
LNAV/VNAV DA	1204-7/8	250 (300-7/8)		NA
LNAV MDA	1300-1	346 (400-1)		NA