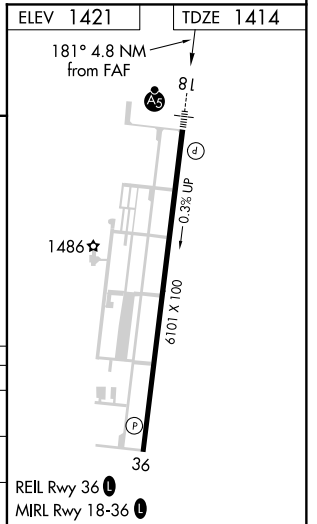
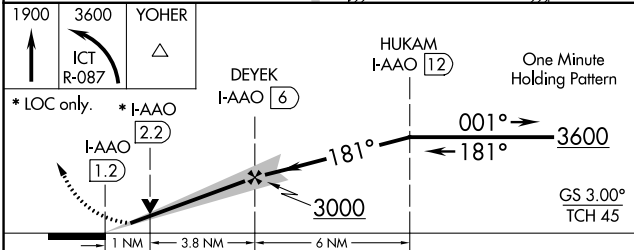
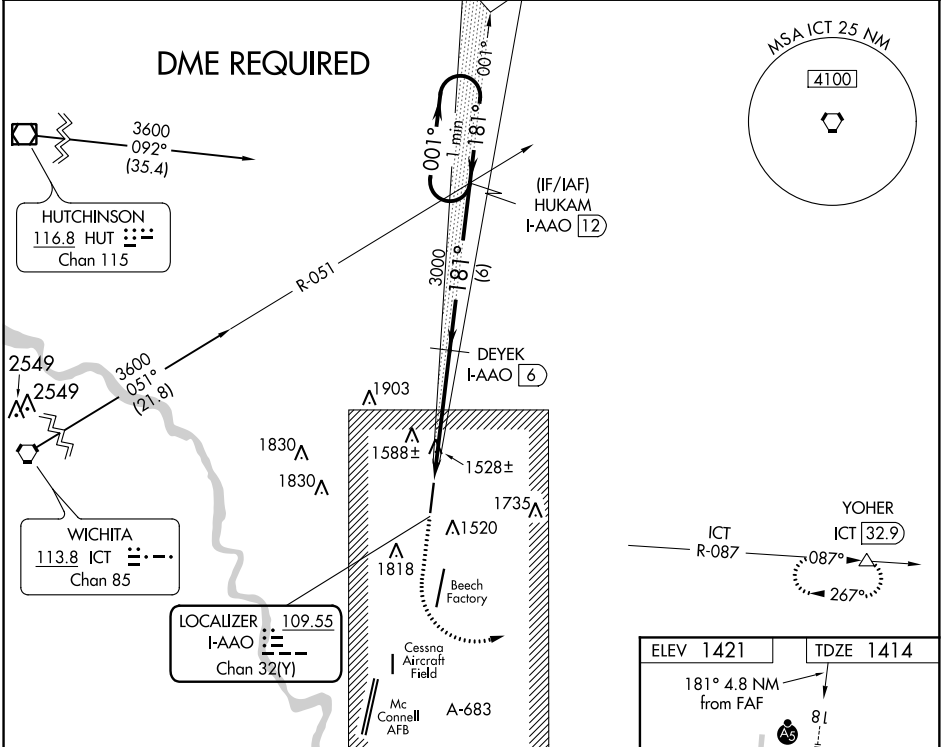


LOC/DME I-AAO <b>109.55</b> Chan 32 (Y)	APP CRS <b>181°</b>	Rwy Idg TDZE Apt Elev <b>6101</b> <b>1414</b> <b>1421</b>
-----------------------------------------------	------------------------	--------------------------------------------------------------------------

**ILS or LOC RWY 18**  
COLONEL JAMES JABARA (A.A.O)

DME required.	MALSR MISSED APPROACH: Climb to 1900 then climbing left turn to 3600 on ICT VORTAC R-087 to YOHER/ICT 32.9 DME and hold.		
ASOS <b>134.025</b>	WICHITA APP CON <b>134.8 269.1</b>	CLNC DEL <b>125.0</b>	UNICOM <b>122.7 (CTAF) 0</b>



CATEGORY	A	B	C	D
S-ILS 18	1614-1/2 200 (200-1/2)			
S-LOC 18	1780-1/2 366 (400-1/2)		1780-3/4 366 (400-3/4)	
CIRCLING	1880-1 459 (500-1)	1880-1 1/2 459 (500-1 1/2)	2120-2 1/4 699 (700-2 1/4)	

NC-2, 12 SEP 2019 to 10 OCT 2019

NC-2, 12 SEP 2019 to 10 OCT 2019