

WAAS CH 81808 W18A	APP CRS 181°	Rwy Idg TDZE Apt Elev	6101 1414 1421
--	------------------------	-----------------------------	---

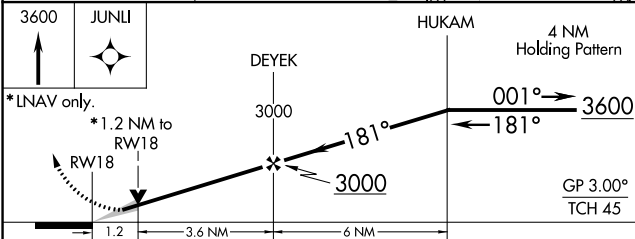
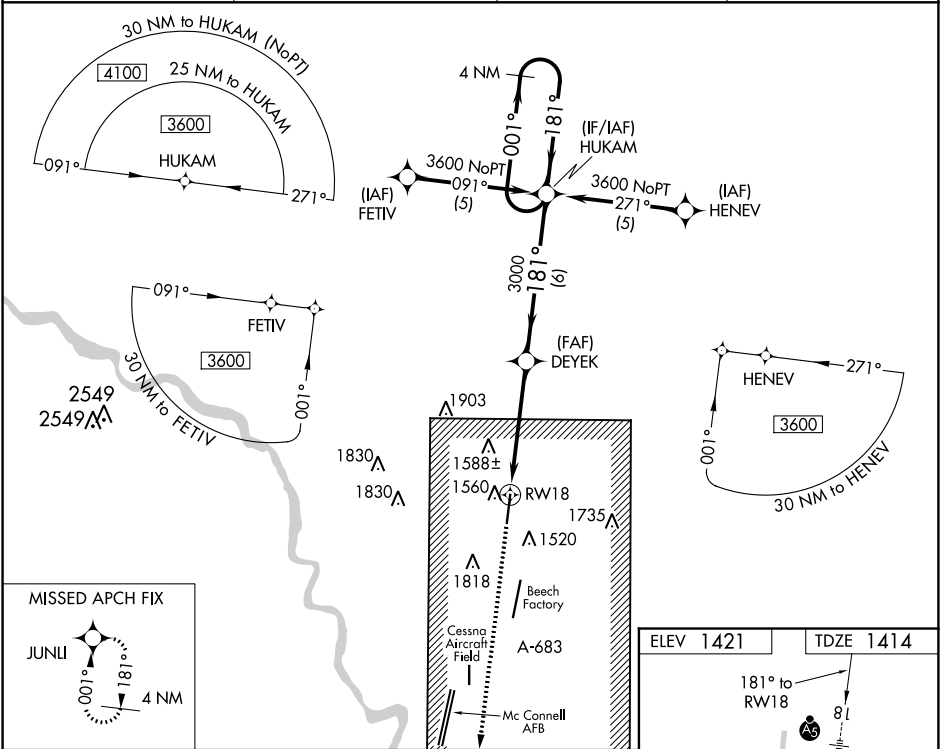
RNAV (GPS) RWY 18

COLONEL JAMES JABARA (A.A.O)

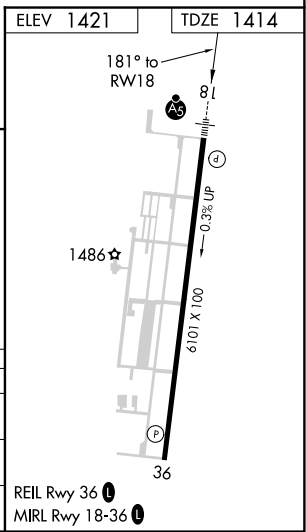
⚠ For inoperative MALSR, increase LPV all Cats visibility to 1 mile and LNAV Cat D visibility to 1½. DME/DME RNP-0.3 NA. When local altimeter setting not received, use Wichita Dwight D Eisenhower National altimeter setting and increase all DA/MDA 40 feet. VDP NA with Wichita Dwight D Eisenhower National altimeter setting.

MALSR
AS
MISSED APPROACH: Climb to 3600 direct JUNLI and hold.

ASOS 134.025	WICHITA APP CON 134.8 269.1	CLNC DEL 125.0	UNICOM 122.7 (CTAF) 1
------------------------	---------------------------------------	--------------------------	---------------------------------



CATEGORY	A	B	C	D
LPV DA	1680-½ 266 (300-½)			
LNAV MDA	1820-½ 406 (400-½)	1820-¾ 406 (400-¾)	1820-1 406 (400-1)	
CIRCLING	1880-1 459 (500-1)	1880-1½ 459 (500-1½)	2120-2¼ 699 (700-2¼)	



NC-2, 12 SEP 2019 to 10 OCT 2019

NC-2, 12 SEP 2019 to 10 OCT 2019