

WAAS CH 86942 W18A	APP CRS 184°	Rwy Idg TDZE Apt Elev	5003 39 39
--	------------------------	-----------------------------	---------------------------------------

RNAV (GPS) RWY 18

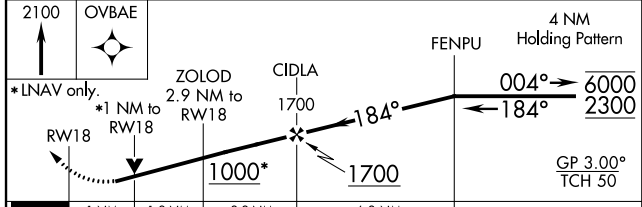
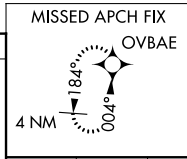
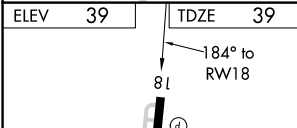
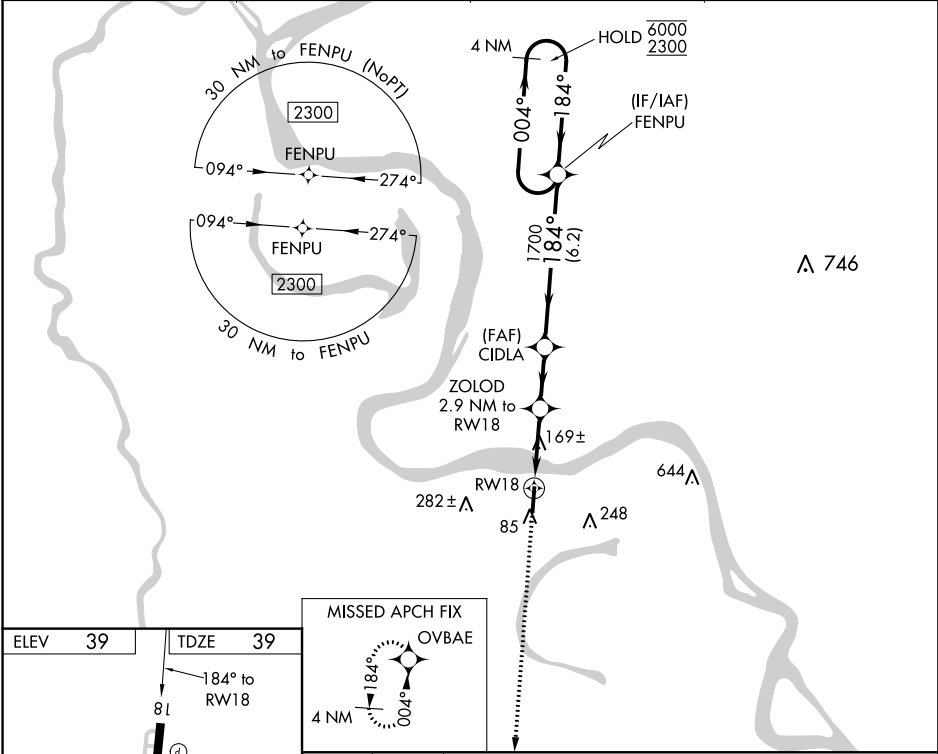
FALSE RIVER RGNL (HZR)

RNP APCH.

▼ Rwy 18 helicopter visibility reduction below 3/4 SM NA. When local altimeter setting not received, use Baton Rouge altimeter setting and increase all DA 51 feet and all visibility 1/8 SM; increase all MDA 60 feet, and LNAV Cat C/D and Circling Cat C visibility 1/4 SM. For uncompensated Baro-VNAV systems, LNAV/VNAV NA below -15°C or above 54°C. Baro-VNAV and VDP NA when using Baton Rouge altimeter setting.

MISSED APPROACH:
Climb to 2100 direct
OVBAE and hold.

AWOS-3PT 121.250	BATON ROUGE APP CON★ 120.3 278.3	GCO 135.075	UNICOM 122.8 (CTAF) 0
----------------------------	--	-----------------------	---------------------------------



2100	OVB AE	4 NM	FENPU	4 NM	Holding Pattern
*LNAV only.	*1 NM to RWY 18	ZOLOD 2.9 NM to RWY 18	CIDLA 1700	004° → 6000	← 184° 2300
	1000*	1700	184°	1700	GP 3.00° TCH 50
	1 NM	1.9 NM	2.2 NM	6.2 NM	
CATEGORY	A	B	C	D	
LPV DA		347-7/8	308 (400-7/8)		
LNAV/VNAV DA		317-7/8	278 (300-7/8)		
LNAV MDA	420-1	381 (400-1)	420-1 1/8	381 (400-1 1/8)	
C CIRCLING	480-1 441 (500-1)	520-1 481 (500-1)	600-1 1/2 561 (600-1 1/2)	600-2 561 (600-2)	

SC-4, 12 SEP 2019 to 10 OCT 2019

SC-4, 12 SEP 2019 to 10 OCT 2019