

WAAS CH <b>42607</b> <b>W36A</b>	APP CRS <b>004°</b>	Rwy Idg TDZE Apt Elev	<b>5003</b> <b>36</b> <b>39</b>
--	------------------------	-----------------------------	---------------------------------------

# RNAV (GPS) RWY 36

FALSE RIVER RGNL (H.Z.R.)

RNP APCH.

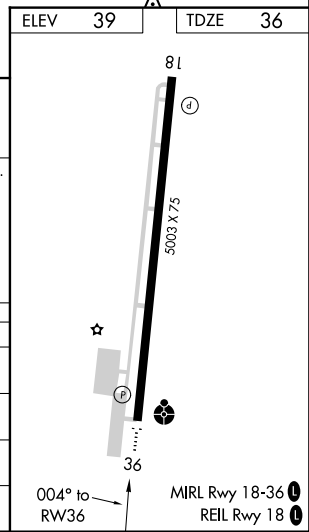
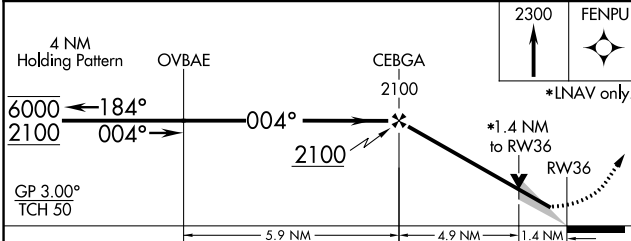
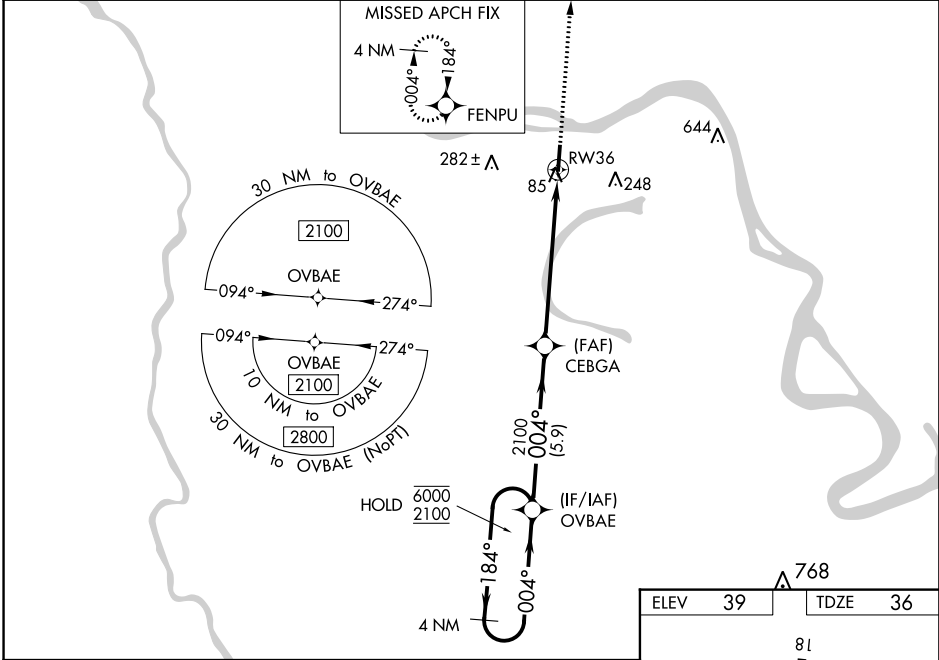
▼ For uncompensated Baro-VNAV systems, LNAV/VNAV NA below -15°C or above 54°C. Baro-VNAV and VDP NA when using Baton Rouge altimeter setting. When local altimeter setting not received, use Baton Rouge altimeter setting and increase all DA 51 feet and all visibility 1/8 SM; increase all MDA 60 feet, and LNAV Cat C/D visibility 1/8 SM and Circling Cat C visibility 1/4 SM. For inop ALS, increase LNAV/VNAV Cats A/B visibility to 2/8 mile. For inop ALS when using Baton Rouge altimeter setting, increase LNAV/VNAV visibility to 1 SM and LNAV Cat C/D visibility to 1 1/8 SM.

ODALS



MISSED APPROACH:  
Climb to 2300 direct FENPU and hold.

AWOS-3PT <b>121.250</b>	BATON ROUGE APP CON* <b>120.3 278.3</b>	GCO <b>135.075</b>	UNICOM <b>122.8 (CTAF)</b>
----------------------------	--	-----------------------	-------------------------------



CATEGORY	A	B	C	D
LPV DA		286-3/4	250 (300-3/4)	
LNAV/VNAV DA		307-3/4	271 (300-3/4)	
LNAV MDA	520-3/4 484 (500-3/4)	520-1 484 (500-1)	520-1 1/4	484 (500-1 1/4)
<b>C</b> CIRCLING	520-1	481 (600-1)	600-1 1/2 561 (600-1 1/2)	600-2 561 (600-2)

SC-4, 12 SEP 2019 to 10 OCT 2019

SC-4, 12 SEP 2019 to 10 OCT 2019