

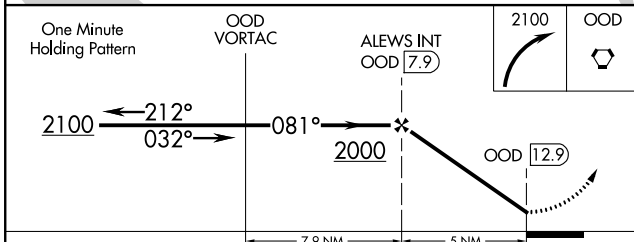
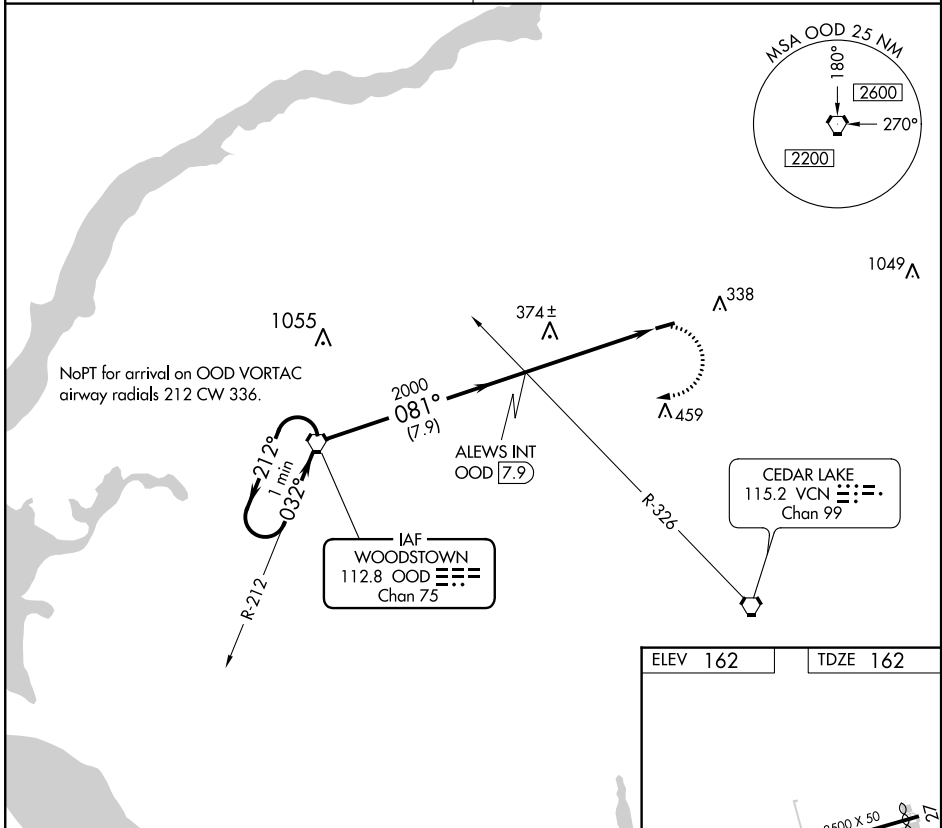
VORTAC OOD	APP CRS	Rwy Idg	<b>3500</b>
<b>112.8</b>	<b>081°</b>	TDZE	<b>162</b>
Chan <b>75</b>		Apt Elev	<b>162</b>

# VOR or GPS RWY 9

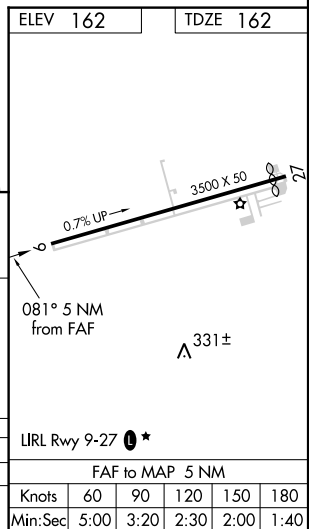
CROSS KEYS (17N)

<p><b>▼</b> Rwy 9 helicopter visibility reduction below 1 SM NA. Procedure NA at night.</p> <p><b>▲</b> NA Use Philadelphia Intl altimeter setting.</p>	<p>MISSED APPROACH: Climbing right turn to 2100 direct OOD VORTAC and hold.</p>
---	---

<p>PHILADELPHIA APP CON <b>127.35 133.875 317.55</b></p>	<p>UNICOM <b>122.8 (CTAF) 0 *</b></p>
--	---



	7.9 NM		5 NM	
CATEGORY	A	B	C	D
S-GPS 9	760-1	598 (600-1)	NA	
CIRCLING	760-1	820-1	NA	
	598 (600-1)	658 (700-1)		



NE-2, 12 SEP 2019 to 10 OCT 2019

NE-2, 12 SEP 2019 to 10 OCT 2019