

APP CRS	Rwy Idg	4600
	TDZE	88
256°	Apt Elev	88

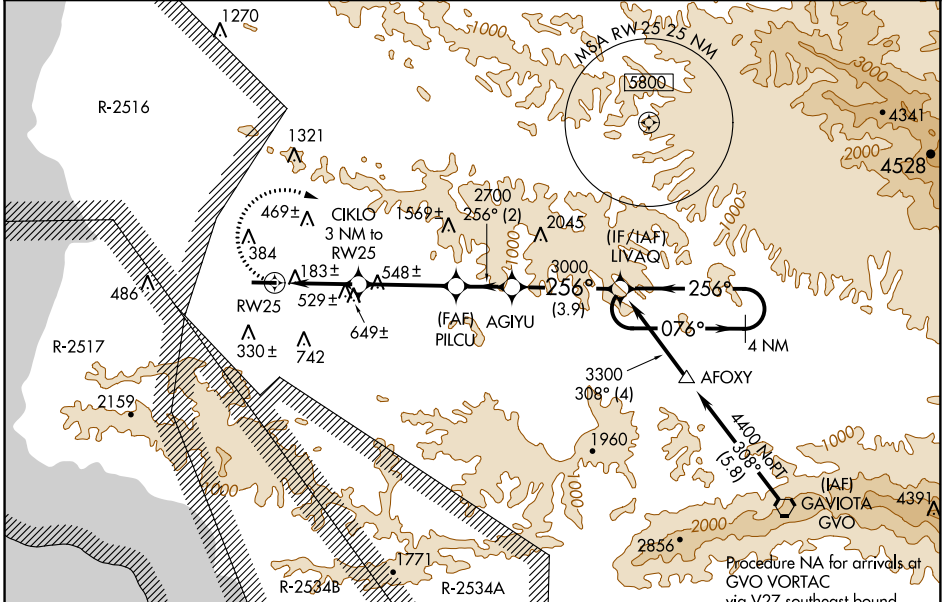
RNAV (GPS) RWY 25

LOMPOC (LPC)

⚠ DME/DME RNP-0.3 NA. When local altimeter setting not received, use Santa Maria Public/Captain G Allan Hancock Field altimeter setting and increase all MDA 60 feet, and increase visibility LNAV and Circling Cat B ¼ mile.

⚠ MISSED APPROACH: Climbing right turn to 3300 direct LIVAQ and hold.

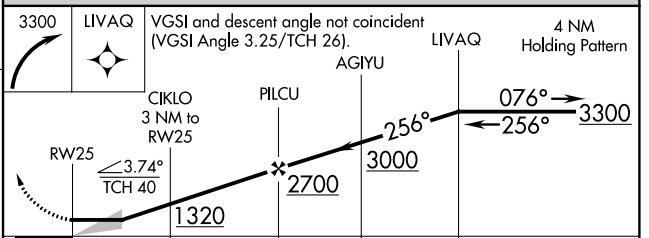
AWOS-3PT 133,875	SANTA BARBARA APP CON* 124.15 327.8	UNICOM 122.7 (CTAF) 0
----------------------------	-----------------------------------------------	---------------------------------



SW-3, 12 SEP 2019 to 10 OCT 2019

SW-3, 12 SEP 2019 to 10 OCT 2019

ELEV 88	TDZE 88
---------	---------



CATEGORY	A	B	C	D
LNAV MDA	1000-1¼	912 (1000-1¼)		NA
CIRCLING	1000-1¼	912 (1000-1¼)		NA