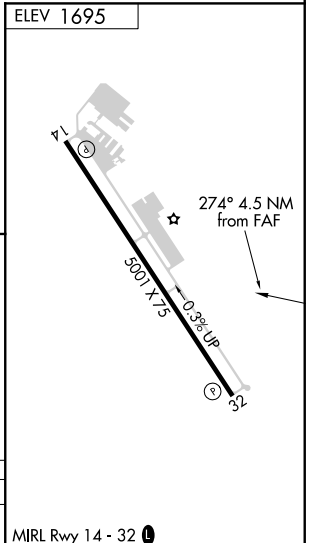
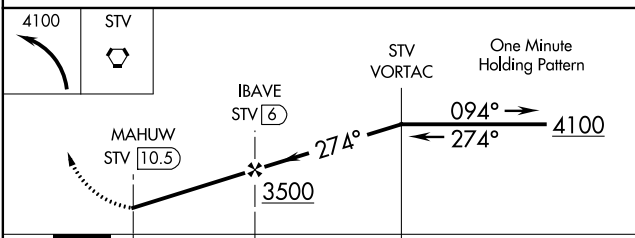
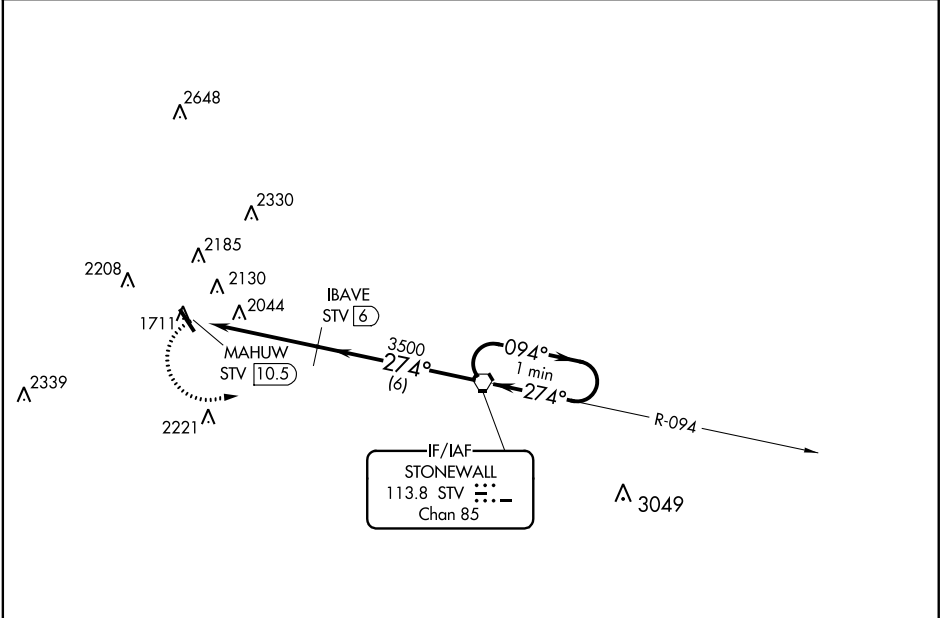


VORTAC STV 113.8 Chan 85	APP CRS 274°	Rwy Idg TDZE Apt Elev N/A N/A 1695
--	------------------------	--

VOR/DME-A
GILLESPIE COUNTY (T82)

▼ ▲ When local altimeter setting not received, use Kerrville altimeter setting and increase MDA 60 feet and Cat C visibility ¼ mile.	MISSED APPROACH: Climbing left turn to 4100 direct STV VORTAC and hold.
---	---

AWOS-3 120.0	HOUSTON CENTER 134.2 307.3	GCO 121.725 0	UNICOM 122.7 (CTAF) 0
------------------------	--------------------------------------	-------------------------	---------------------------------



CATEGORY	A	B	C	D
CIRCLING	2440-1 745 (800-1)	2440-1¼ 745 (800-1¼)	2480-2¼ 785 (800-2¼)	NA

SC-3, 12 SEP 2019 to 10 OCT 2019

SC-3, 12 SEP 2019 to 10 OCT 2019