

NDB VIQ	APP CRS	Rwy Idg	<b>3400</b>
<b>368</b>	<b>272°</b>	TDZE	<b>1237</b>
		Apt Elev	<b>1238</b>

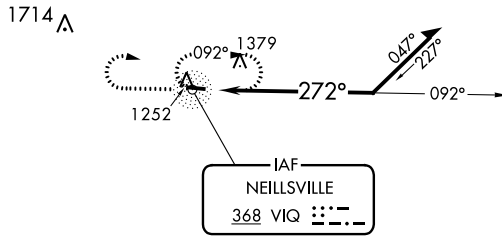
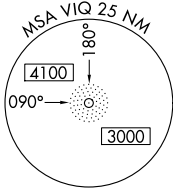
# NDB RWY 28

NEILLSVILLE MUNI (VIQ)

**▼** Use Marshfield altimeter setting; when not received, use Wisconsin Rapids altimeter setting and increase all MDA 80 feet and increase S-28 and Circling Cat B visibility ¼ SM. Rwy 28 helicopter visibility reduction below ¾ SM NA.

**▲ NA** MISSED APPROACH: Climb to 3000 then right turn direct VIQ NDB and hold.

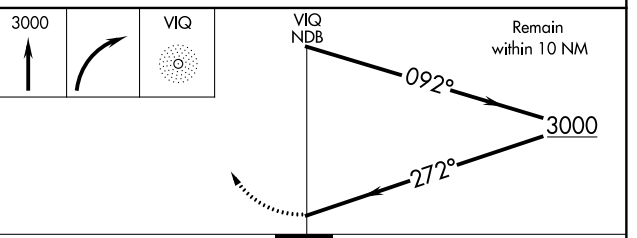
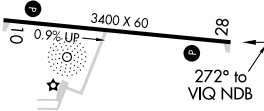
MARSHFIELD ASOS-3 <b>121.575</b>	MINNEAPOLIS CENTER <b>124.4 317.7</b>	UNICOM <b>122.8 (CTAF) 0</b>
-------------------------------------	--	---------------------------------



ELEV 1238	TDZE 1237
-----------	-----------



Procedure NA for arrivals at MILTO on V246 westbound.



LIRL Rwy 10-28 0

CATEGORY	A	B	C	D
S-28	1940-1	703 (800-1)		NA
CIRCLING	1940-1	702 (800-1)		NA