

APP CRS Rwy Idg **3400**  
 277° TDZE **1237**  
 Apt Elev **1238**

# RNAV (GPS) RWY 28

NEILLSVILLE MUNI (VIQ)

RNP APCH.

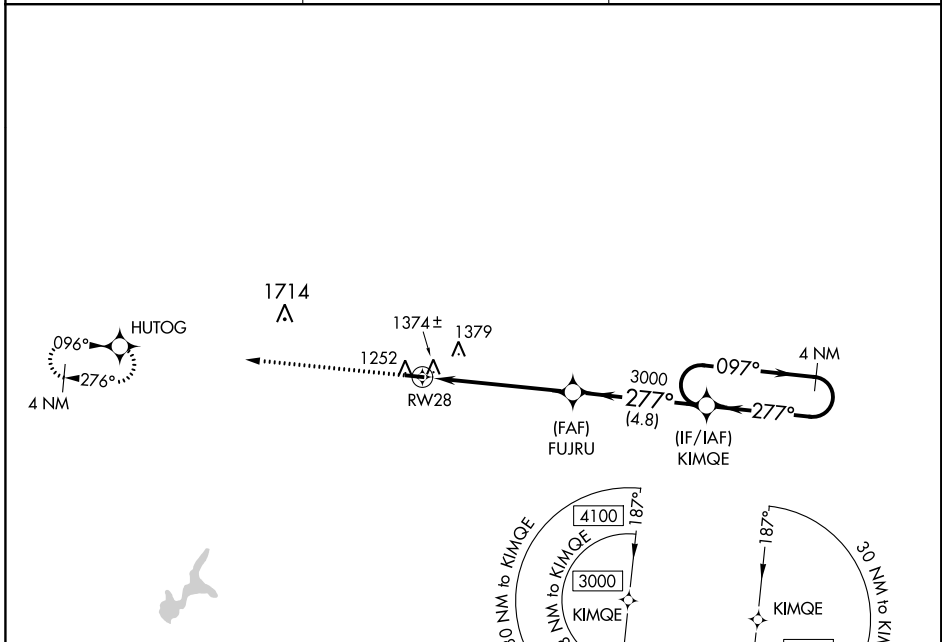
**▼** Rwy 28 helicopter visibility reduction below 3/4 SM NA. Use Marshfield altimeter setting; when not received, use Wisconsin Rapids altimeter setting and increase all MDA 80 feet.  
**▲ NA**

MISSED APPROACH:  
 Climb to 3000 direct  
 HUTOG and hold.

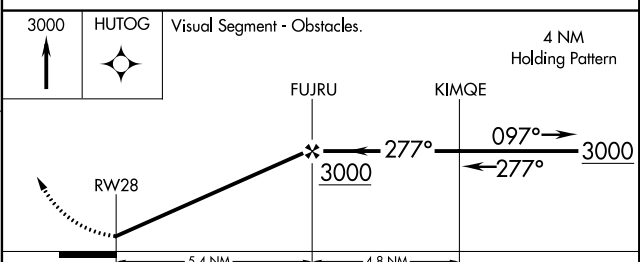
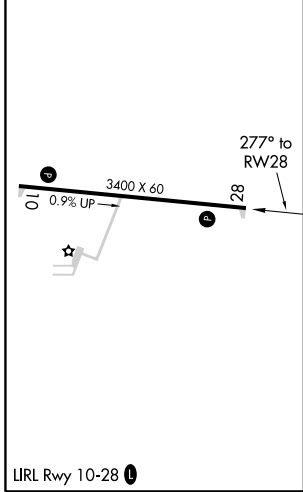
MARSHFIELD ASOS-3  
**121.575**

MINNEAPOLIS CENTER  
**124.4 317.7**

UNICOM  
**122.8 (CTAF) 1**



ELEV 1238 TDZE 1237



CATEGORY	A	B	C	D
LNAV MDA	1680-1	443 (500-1)	NA	
CIRCLING	1720-1	482 (500-1)	NA	

EC-3, 12 SEP 2019 to 10 OCT 2019

EC-3, 12 SEP 2019 to 10 OCT 2019