

APP CRS 354°	Rwy Idg 4289
	TDZE 2105
	Apt Elev 2121

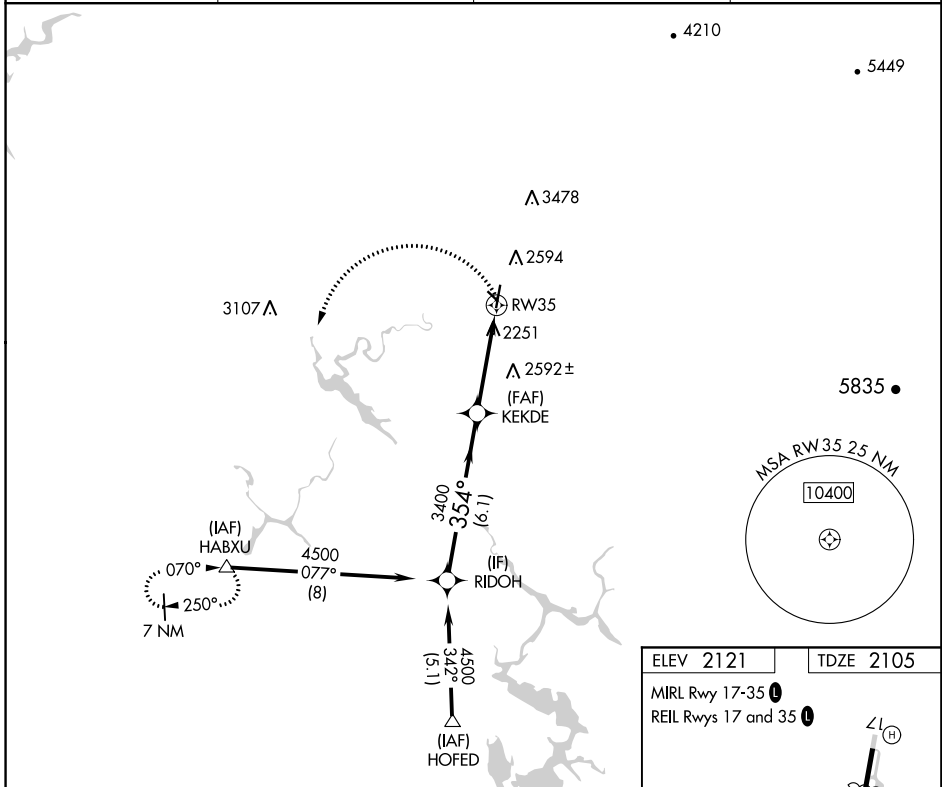
RNAV (GPS) RWY 35

COLUMBIA (O22)

⚠ Circling NA east of Rwy 17-35. Rwy 17/35 helicopter visibility reduction below 1 SM NA. DME/DME RNP-0.3 NA. Procedure NA at night.

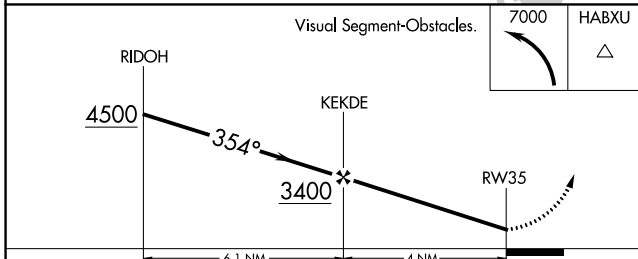
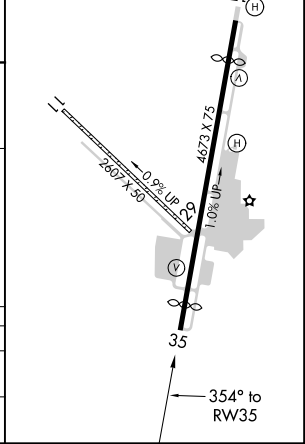
⚠ MISSED APPROACH: Climbing left turn to 7000 direct HABXU and hold, continue climb-in-hold to 7000.

AWOS-3 124.65	NORCAL APP CON 125.1 363.2 (NORTH/WEST)	OAKLAND CENTER 121.25 327.0 (EAST/SOUTH)	UNICOM 122.975 (CTAF) 0
-------------------------	---	--	-----------------------------------



ELEV 2121	TDZE 2105
-----------	-----------

MIRL Rwy 17-35 **0**
REIL Rwys 17 and 35 **0**



CATEGORY	A	B	C	D
LNVA MDA	3140-1¼ 1035 (1100-1¼)	3140-1½ 1035 (1100-1½)	3140-3 1035 (1100-3)	NA
C CIRCLING	3140-1¼ 1019 (1100-1¼)	3140-1½ 1019 (1100-1½)	3140-3 1019 (1100-3)	NA

SW-2, 12 SEP 2019 to 10 OCT 2019

SW-2, 12 SEP 2019 to 10 OCT 2019