

NDB JNM 392	APP CRS 036°	Rwy Idg TDZE Apt Elev	N/A N/A 875
-----------------------	------------------------	-----------------------------	--

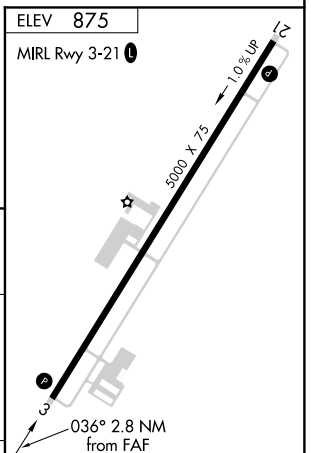
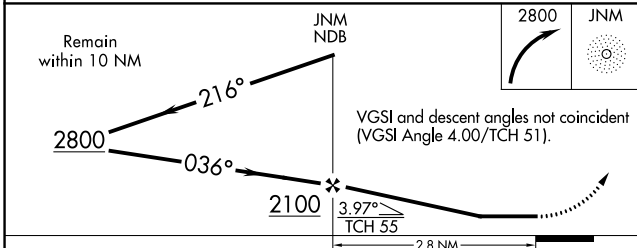
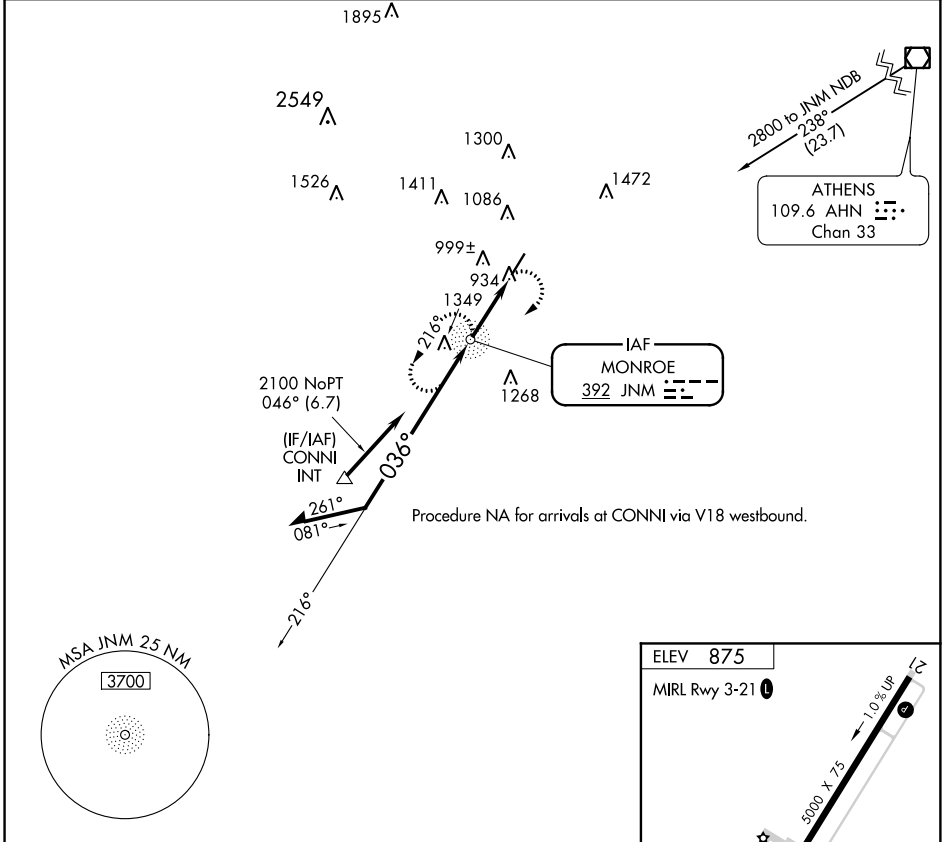
NDB-A

MONROE-WALTON COUNTY (D73)

Procedure NA at night. Helicopter visibility reduction below 1 SM NA. When local altimeter setting not received, use Athens altimeter setting and increase all MDA 60 feet and Cat C visibility 1/4 mile.

MISSED APPROACH: Climbing right turn to 2800 direct JNM NDB and hold, continue climb-in-hold to 2800.

AWOS-3PT 120.825	ATLANTA APP CON 126.975 239.275	CTAF 122.9
----------------------------	---	----------------------



CATEGORY	A	B	C	D	FAF to MAP 2.8 NM												
CIRCLING	1460-1	585 (600-1)	1460-1 1/2 585 (600-1 1/2)	NA	<table border="1"> <tr> <td>Knots</td> <td>60</td> <td>90</td> <td>120</td> <td>150</td> <td>180</td> </tr> <tr> <td>Min:Sec</td> <td>2:48</td> <td>1:52</td> <td>1:24</td> <td>1:07</td> <td>0:56</td> </tr> </table>	Knots	60	90	120	150	180	Min:Sec	2:48	1:52	1:24	1:07	0:56
Knots	60	90	120	150	180												
Min:Sec	2:48	1:52	1:24	1:07	0:56												

NDB-A

SE-4, 12 SEP 2019 to 10 OCT 2019

SE-4, 12 SEP 2019 to 10 OCT 2019