

NDB	CMY	APP CRS	Rwy Idg	<b>4265</b>
			TDZE	<b>831</b>
			Apt Elev	<b>838</b>

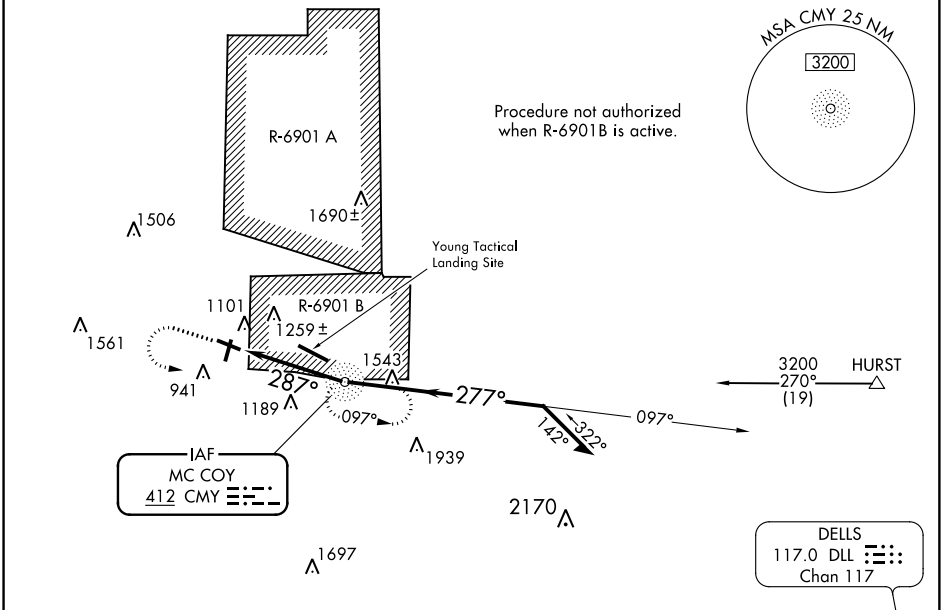
# NDB RWY 29

SPARTA/FORT MC COY (CMY)

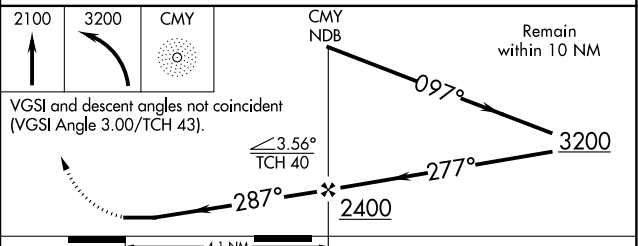
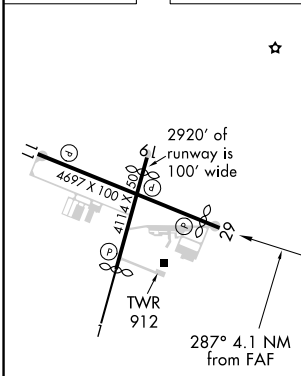
**⚠** Circling to Rwy 19 NA at night. When local altimeter setting not received, use La Crosse altimeter setting and increase all MDA 80 feet and visibility S-29 Cat B ¼ mile and Cat C ½ mile, Circling Cat B and C ¼ mile.  
**⚠** Helicopter visibility reduction below 1 SM not authorized.  
**❄** -33°C

**MISSED APPROACH:** Climb to 2100 then climbing left turn to 3200 direct CMY NDB and hold.

AWOS-3 <b>119.775</b>	VOLK APP CON * <b>135.25 244.875</b>	SPARTA/MC COY TOWER * <b>124.6 241.0</b>	GND CON <b>123.1</b>	CTAF <b>124.6</b>
--------------------------	---	---	-------------------------	----------------------



ELEV 838	TDZE 831
----------	----------



REIL Rwys 11 and 29

MIRL Rwys 1-19 and 11-29

FAF to MAP 4.1 NM

Knots	60	90	120	150	180
Min:Sec	4:06	2:44	2:03	1:38	1:22

CATEGORY	A	B	C	D
S-29	1560-1	729 (800-1)	1560-2 729 (800-2)	NA
CIRCLING	1560-1	722 (800-1)	1580-2¼ 742 (800-2¼)	NA

EC-3, 12 SEP 2019 to 10 OCT 2019

EC-3, 12 SEP 2019 to 10 OCT 2019