

WAAS CH <b>70436</b> <b>W03A</b>	APP CRS <b>038°</b>	Rwy Idg TDZE Apt Elev	<b>6001</b> <b>3976</b> <b>3979</b>
--	------------------------	-----------------------------	---

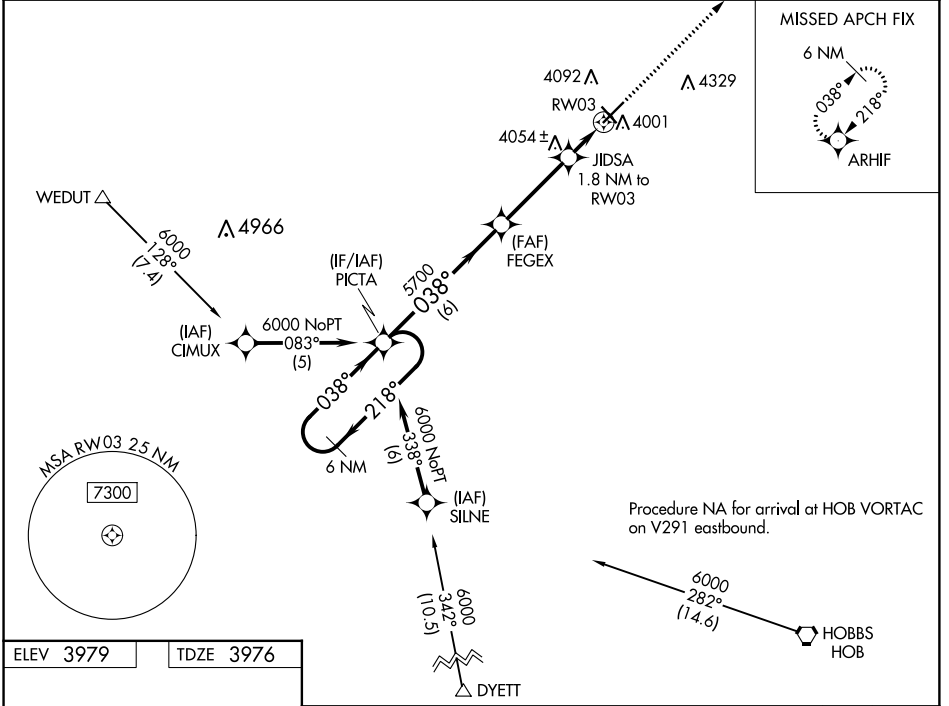
**RNAV (GPS) RWY 3**  
LEA COUNTY-ZIP FRANKLIN MEMORIAL (E06)

**NA** Baro-VNAV NA. DME/DME RNP-0.3 NA. Use Hobbs altimeter setting; when not received, procedure NA. Helicopter visibility reduction below 1 SM NA. Night landing: Rwy 3, 12, 30 NA.

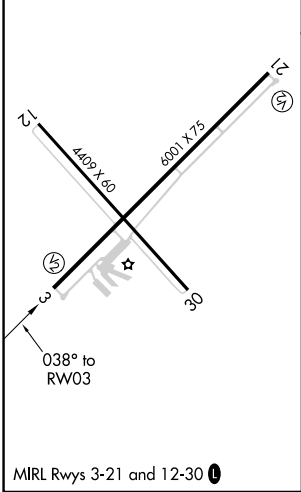
**MISSED APPROACH:** Climb to 6000 direct ARHIF and hold.

**FORT WORTH CENTER**  
**133.1 298.95**

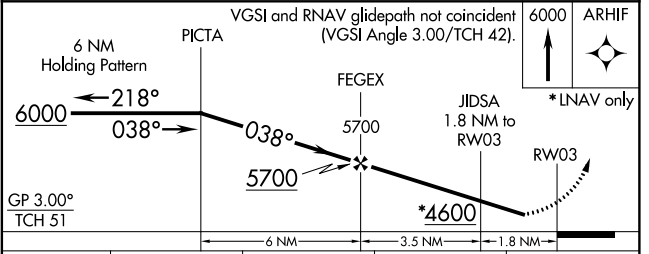
**UNICOM**  
**122.8 (CTAF)**



ELEV 3979 TDZE 3976



MIRL RWys 3-21 and 12-30



CATEGORY	A	B	C	D
LPV DA	4314-1½	338 (400-1½)		NA
LNAV/VNAV DA	4314-1½	338 (400-1½)		NA
LNAV MDA	4400-1	424 (500-1)	4400-1¼ 424 (500-1¼)	NA
<b>C</b> CIRCLING	4480-1	501 (600-1)	4720-2¼ 741 (800-2¼)	NA

LOVINGTON, NEW MEXICO  
Amdt 1A 21JUL16

LEA COUNTY-ZIP FRANKLIN MEMORIAL (E06)  
32°57'N-103°25'W

**RNAV (GPS) RWY 3**

SW-1, 12 SEP 2019 to 10 OCT 2019

SW-1, 12 SEP 2019 to 10 OCT 2019