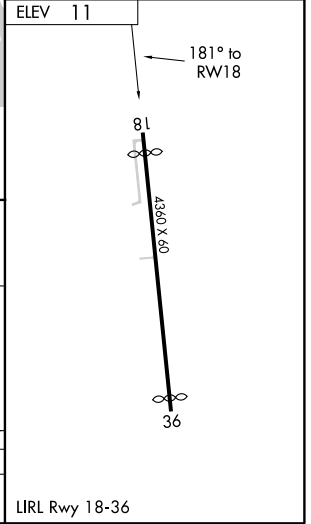
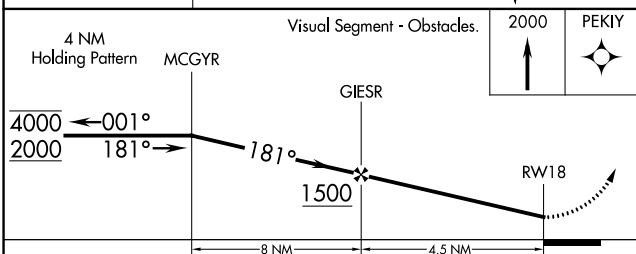
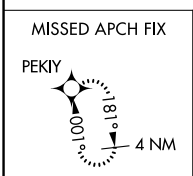
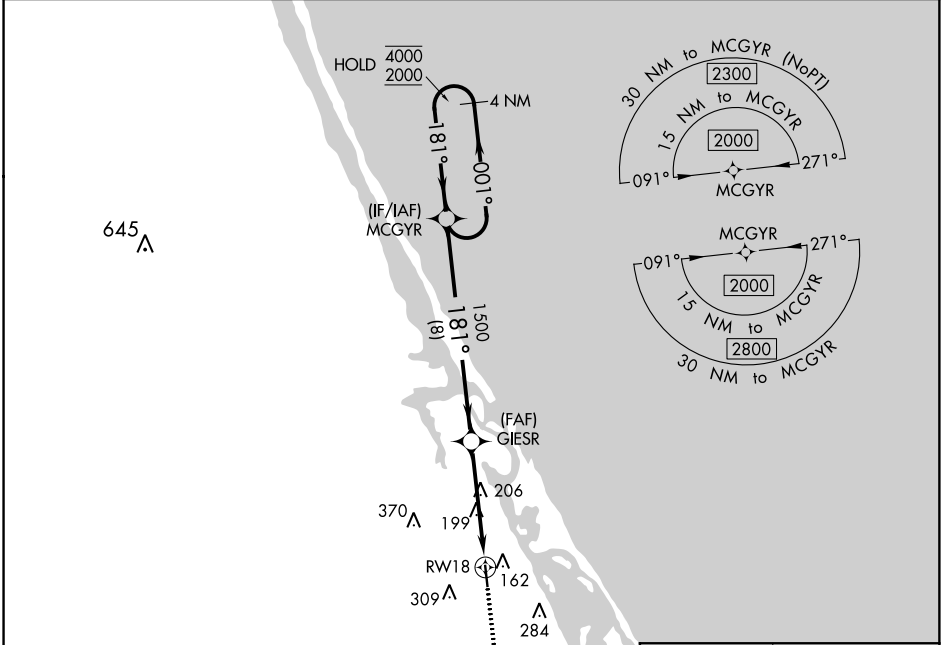


APP CRS	Rwy ldg	<b>4045</b>
<b>181°</b>	TDZE	<b>N/A</b>
	Apt Elev	<b>11</b>

**RNAV (GPS)-A**  
**MASSEY RANCH AIRPARK (X50)**

RNP APCH.	MISSED APPROACH: Climb to 2000 direct PEKIY and hold.
▼ ▲ NA	Procedure NA at night. Use New Smyrna Beach Muni altimeter setting.

NEW SMYRNA BEACH MUNI AWOS-3 <b>124.625</b>	DAYTONA APP CON <b>125.35 322.3</b>	UNICOM <b>122.7 (CTAF)</b>
--	--	-------------------------------



CATEGORY	A	B	C	D
◻ CIRCLING	500-1 489 (500-1)	620-1 609 (700-1)	680-1¼ 669 (700-1¼)	NA

SE-3, 12 SEP 2019 to 10 OCT 2019

SE-3, 12 SEP 2019 to 10 OCT 2019