

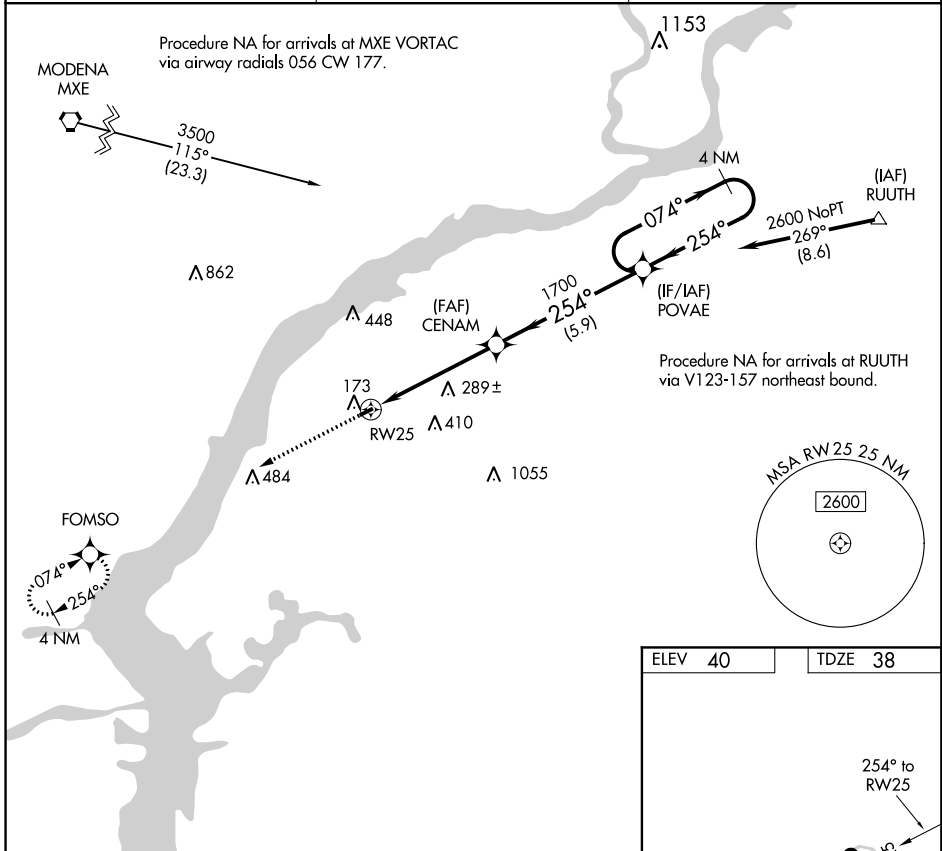
APP CRS	Rwy Idg	<b>2419</b>
<b>254°</b>	TDZE	<b>38</b>
	Apt Elev	<b>40</b>

# RNAV (GPS) RWY 25

SPITFIRE AERODROME (7N7)

RNP APCH.	Use Philadelphia Intl altimeter setting. Procedure NA at night. Rwy 25 helicopter visibility below 1 SM NA.	MISSED APPROACH: Climb to 2600 direct FOMSO and hold.
▼ NA ▲ NA		

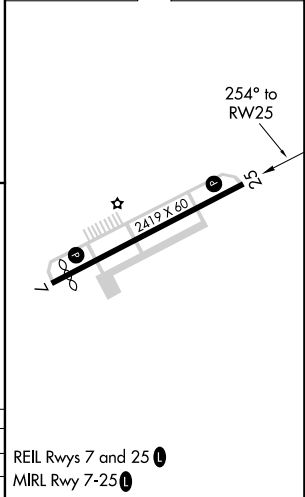
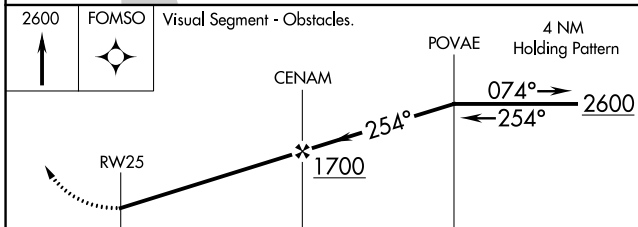
PHILADELPHIA INTL ASOS <b>133.4</b>	PHILADELPHIA APP CON <b>119.75 269.25</b>	UNICOM <b>122.7 (CTAF) 0</b>
--	--	---------------------------------



NE-2, 12 SEP 2019 to 10 OCT 2019

NE-2, 12 SEP 2019 to 10 OCT 2019

ELEV 40	TDZE 38
---------	---------



CATEGORY	A	B	C	D
LNAV MDA	580-1	542 (600-1)		NA
CIRCLING	600-1	560 (600-1)		NA