

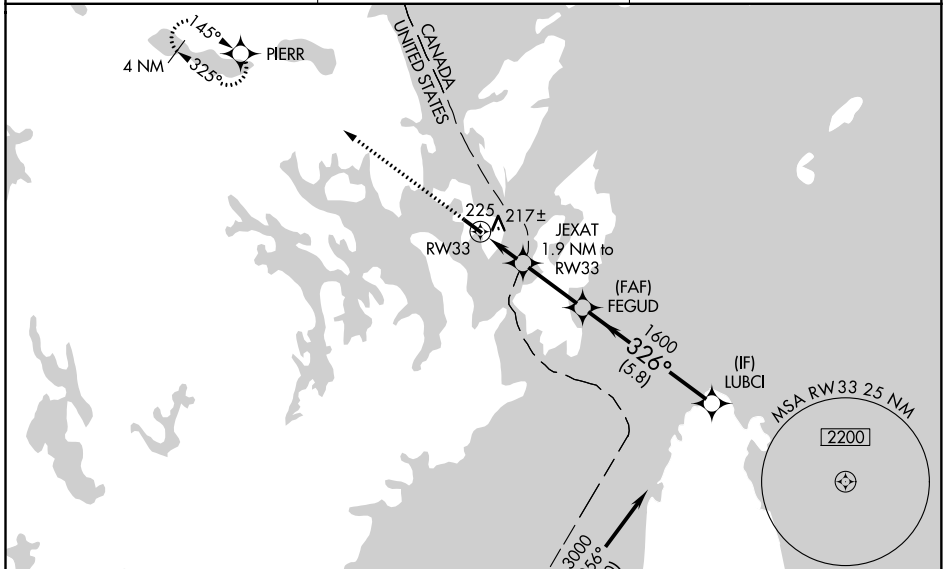
WAAS CH 78340 W33A	APP CRS 326°	Rwy Idg 4002
		TDZE 45
		Apt Elev 45

RNAV (GPS) RWY 33

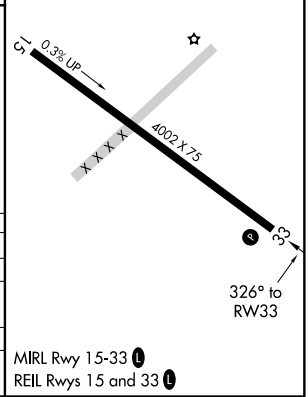
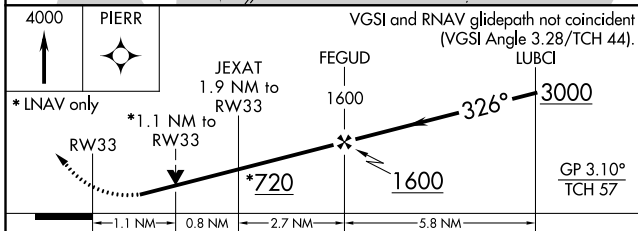
EASTPORT MUNI (EPM)

RNP APCH.	For uncompensated Baro-VNAV systems, LNAV/VNAV NA below -15°C or above 47°C. Rwy 33 helicopter visibility reduction below 3/4 SM NA. When local altimeter setting not received, use Hancock County-Bar Harbor altimeter setting: increase LPV DA to 531 feet and all visibilities 1/2 SM; increase LNAV/VNAV DA to 552 feet and all visibilities 1/2 SM; increase all MDA 160 feet and visibility Cat C and D 1/2 SM. VDP and Baro-VNAV NA when using Hancock County-Bar Harbor altimeter setting. Circling Rwy 15 NA at night.	MISSED APPROACH: Climb to 4000 direct PIERR and hold, continue climb-in-hold to 4000.
-----------	---	--

AWOS-AV 122.8	BOSTON CENTER 124.25 290.5	UNICOM 122.8 (CTAF) 0
-------------------------	--------------------------------------	---------------------------------



ELEV 45	TDZE 45
	△ 250±



CATEGORY	A	B	C	D
LPV DA		378-1	333 (400-1)	
LNAV/VNAV DA		386-1	341 (400-1)	
LNAV MDA	480-1	435 (500-1)	480-1 1/4	435 (500-1 1/4)
CIRCLING	580-1	535 (600-1)	580-1 1/2	720-2 1/4
			535 (600-1 1/2)	675 (700-2 1/4)

MIRL Rwy 15-33 0
REIL Rws 15 and 33 0

NE-1, 12 SEP 2019 to 10 OCT 2019

NE-1, 12 SEP 2019 to 10 OCT 2019