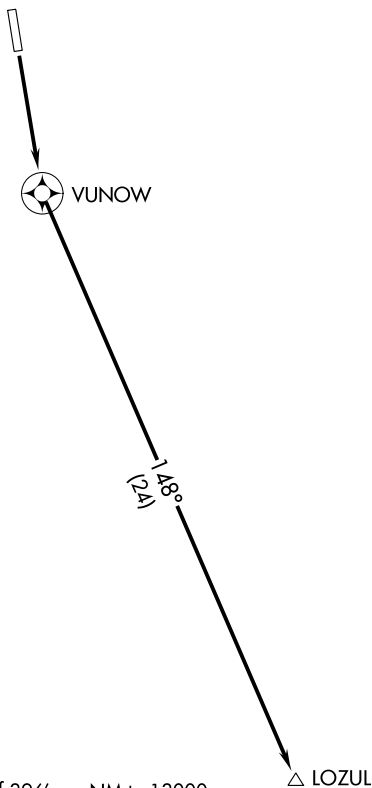


ASOS
118.375
DENVER CENTER
119.85 363.15
UNICOM
122.8 (CTAF)



NOTE: GPS required.
NOTE: RNAV 1.
NOTE: RADAR required.

TAKEOFF MINIMUMS

Rwy 16: Standard with minimum climb of 396' per NM to 13000.
Rwy 34: NA, ATC.

TAKEOFF OBSTACLE NOTES

Rwy 16: Poles, signs beginning 9' from DER, 17' left of centerline, up to 2' AGL/9926' MSL.
Pole 10' from DER, 17' right of centerline, 2' AGL/9926' MSL.
Trees beginning 180' from DER, 516' left of centerline, up to 9948' MSL.
Transmission line, poles beginning 499' from DER, 632' left of centerline, up to 101' AGL/9989' MSL.

NOTE: Chart not to scale.

DEPARTURE ROUTE DESCRIPTION

TAKEOFF RUNWAY 16: Climb direct VUNOW, then on track 148° to LOZUL, then on assigned route, maintain 16000.