

WAAS CH 63142 W16A	APP CRS 161°	Rwy Idg TDZE Apt Elev	6400 9934 9934
--	------------------------	-----------------------------	---

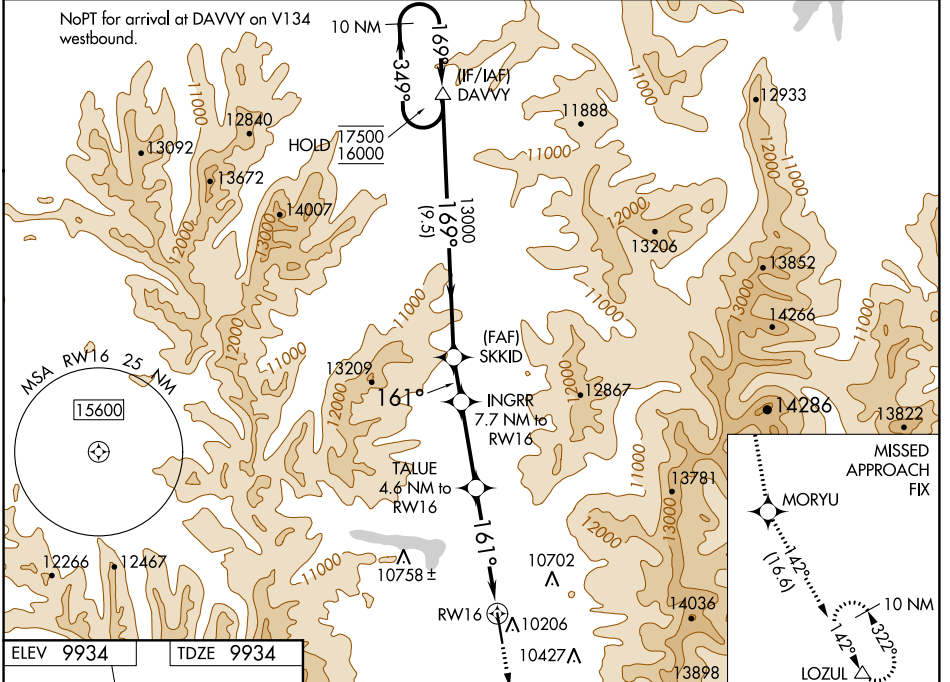
RNAV (GPS) RWY 16

LAKE COUNTY (L.X.V)

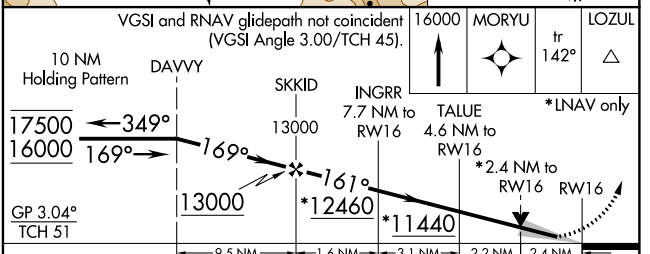
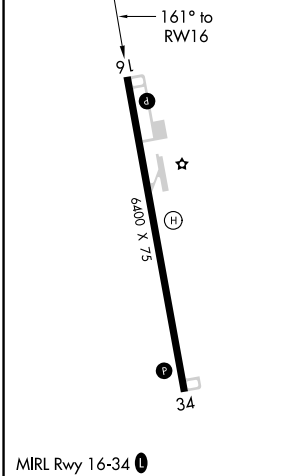
RNP APCH. **▽** For uncompensated Baro-VNAV systems, LNAV/VNAV NA below -26°C or above 54°C. When local altimeter setting not received, procedure NA. **⚠** -27°C

MISSED APPROACH: Climb to 16000 direct MORYU and on track 142° to LOZUL and hold, continue climb-in-hold to 16000. #Missed approach requires minimum climb of 240 feet per NM to 12500.

ASOS 118.375	DENVER CENTER 119.85 363.15	UNICOM 122.8 (CTAF) 0
------------------------	---------------------------------------	---------------------------------



ELEV 9934	TDZE 9934
-----------	-----------



CATEGORY	A	B	C	D
LPV DA#	10184-1	250 (300-1)		NA
LPV DA	10546-1 ³ / ₄	612 (700-1 ³ / ₄)		NA
LNAV/VNAV DA	10542-1 ³ / ₄	608 (700-1 ³ / ₄)		NA
LNAV MDA	10740-1 806 (900-1)	10740-1 ¹ / ₄ 806 (900-1 ¹ / ₄)	10740-2 ¹ / ₂ 806 (900-2 ¹ / ₂)	NA
CIRCLING	10740-1 806 (900-1)	11040-1 ¹ / ₂ 1106 (1200-1 ¹ / ₂)	12020-3 2086 (2100-3)	NA

SW-1, 12 SEP 2019 to 10 OCT 2019

SW-1, 12 SEP 2019 to 10 OCT 2019