

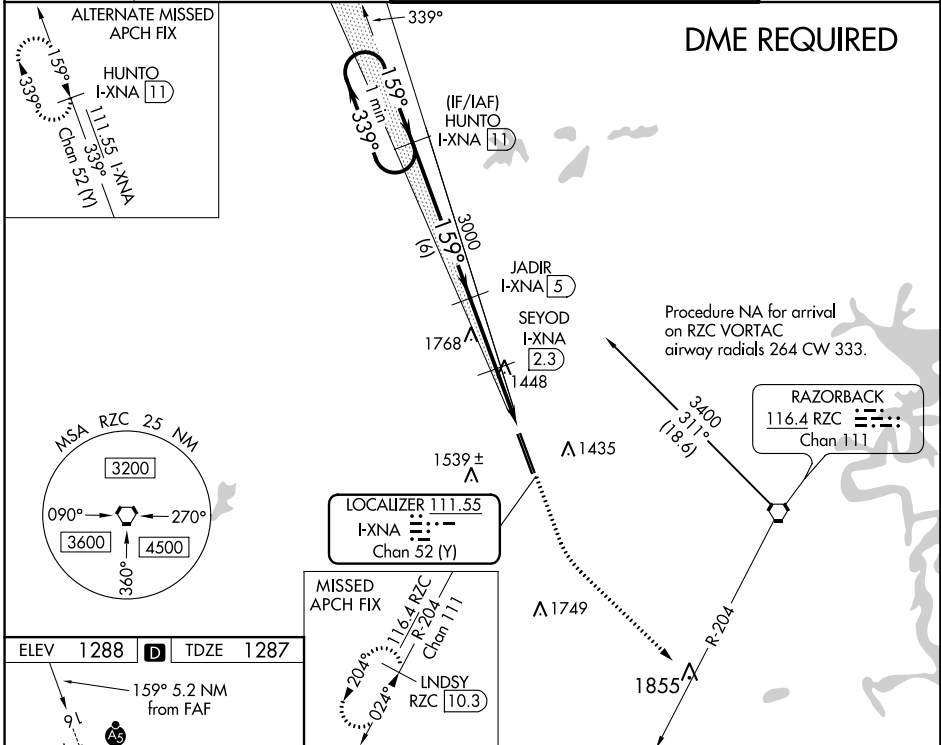
LOC/DME I-XNA 111.55 Chan 52 (Y)	APP CRS 159°	Rwy ldg TDZE 8800 1287	Apt Elev 1288
--	------------------------	--	-------------------------

ILS or LOC RWY 16

NORTHWEST ARKANSAS RGNL (XNA)

<p>DME required. For inop ALS increase visibility S-ILS 16 Cat E to RVR 4000 and S-LOC 16 Cat C/D/E to RVR 6000. ** RVR 1800 authorized with use of FD or AP or HUD to DA.</p>	<p>MALS</p>	<p>MISSED APPROACH: Climb to 1800 then climbing left turn to 3400 on heading 133° and RZC VORTAC R-204 to LNSDY/RZC 10.3 DME and hold.</p>

ATIS 119.425	RAZORBACK APP CON * 121.0 244.575	NORTHWEST ARKANSAS RGNL TOWER * 127.1 (CTAF) 0	GND CON 121.9
------------------------	---	---	-------------------------



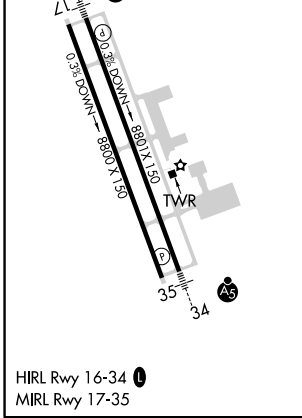
SC-1, 12 SEP 2019 to 10 OCT 2019

SC-1, 12 SEP 2019 to 10 OCT 2019

ELEV 1288	D	TDZE 1287
------------------	----------	------------------

VGSI and ILS glidepath not coincident (VGSI Angle 3.00/TCH 52).

GS 3.00° TCH 57



CATEGORY	A	B	C	D	E
S-ILS 16	**1487/24 200 (200-½)				
S-LOC 16	1700/24	413 (500-½)	1700/40	413 (500-¾)	
C CIRCLING	1740-1 452 (500-1)	1760-1 472 (500-1)	2040-2¼ 752 (800-2¼)	2080-2½ 792 (800-2½)	2080-2¾ 792 (800-2¾)