

LOC/DME I-FBS 111.55	APP CRS 339°	Rwy Idg TDZE Apt Elev	8800 1273 1288
Chan 52 (Y)			

ILS or LOC RWY 34

NORTHWEST ARKANSAS RGNL (X.N.A)

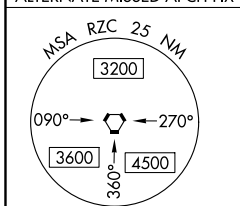
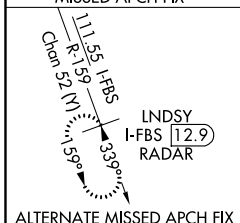
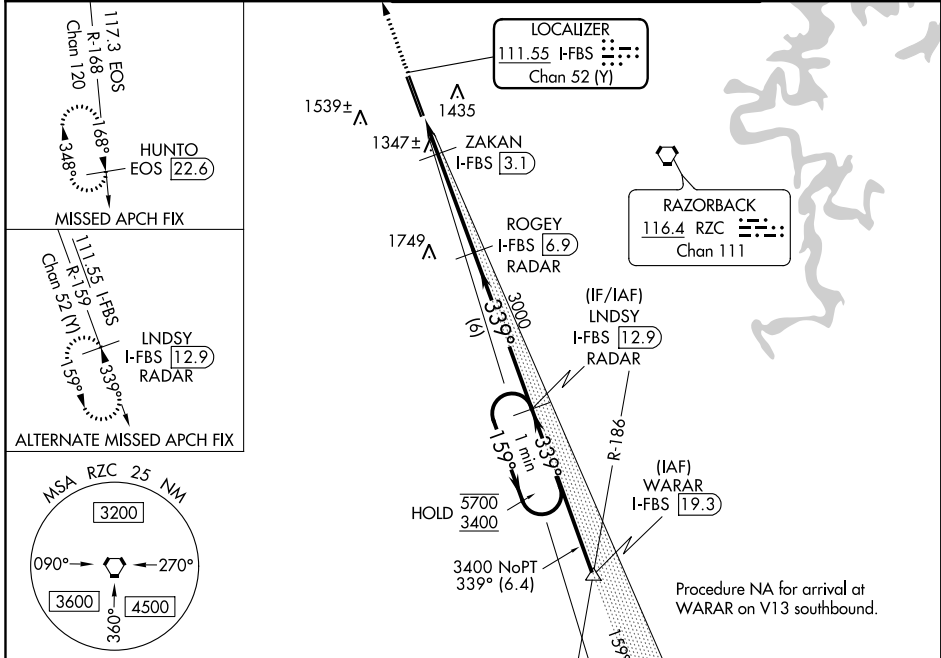
DME required.

▼ For inop ALS, increase visibility S-ILS 34 Cat E to RVR 4000 and S-LOC 34 Cat C/D/E to RVR 5000.

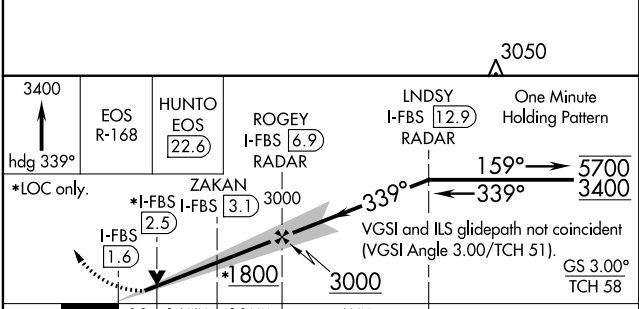
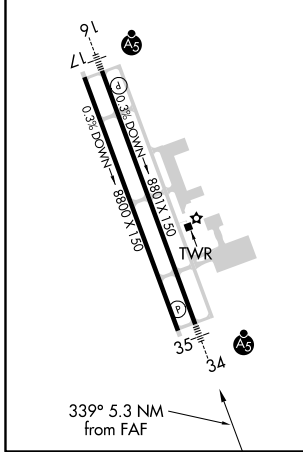
▲ #RVR 1800 authorized with use of FD or AP or HUD to DA.

MALSRS MISSED APPROACH: Climb to 3400 on heading 339° and EOS VOR/DME R-168 to HUNTO/EOS VOR/DME 22.6 DME and hold.

ATIS 119.425	RAZORBACK APP CON * 121.0 244.575	NORTHWEST ARKANSAS RGNL TOWER * 127.1 (CTAF) 0	GND CON 121.9
------------------------	---	--	-------------------------



ELEV 1288	D TDZE 1273
HIRL Rwy 16-34 1	
MIRL Rwy 17-35	



CATEGORY	A	B	C	D	E
S-ILS 34 #	1473/24 200 (200±½)				
S-LOC 34	1600/24	327 (400±½)	1600/26 327 (400±½)		
C CIRCLING	1740-1 452 (500-1)	1760-1 472 (500-1)	2040-2¼ 752 (800-2¼)	2080-2½ 792 (800-2½)	2080-2¾ 792 (800-2¾)

SC-1, 12 SEP 2019 to 10 OCT 2019

SC-1, 12 SEP 2019 to 10 OCT 2019