

WAAS CH 72899 W16A	APP CRS 159°	Rwy Idg TDZE Apt Elev	8800 1287 1288
--	------------------------	-----------------------------	---

RNAV (GPS) RWY 16

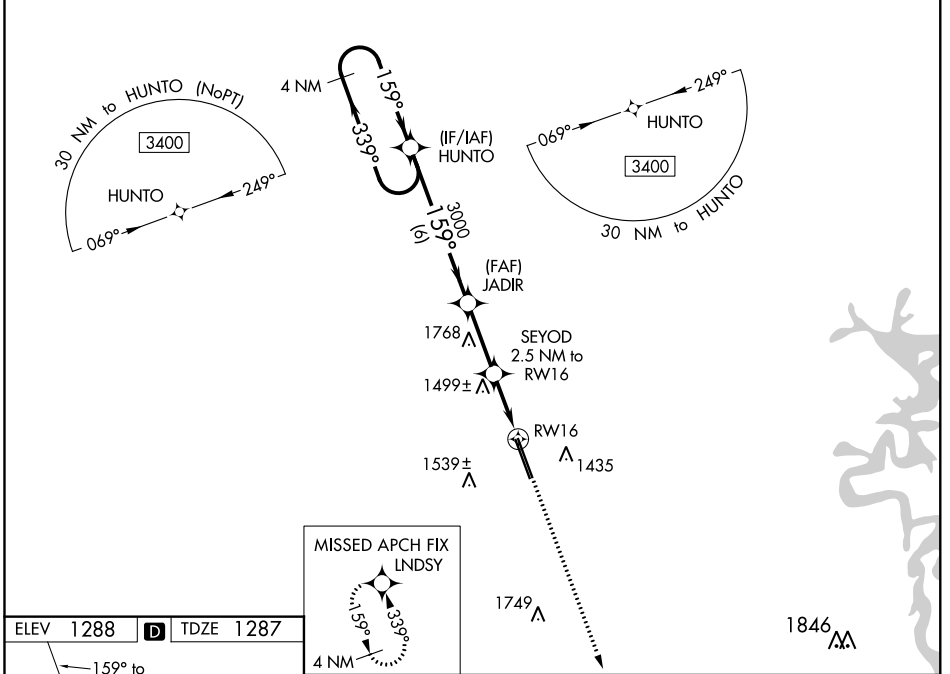
NORTHWEST ARKANSAS RGNL (XNA)

⚠ For uncompensated Baro-VNAV systems, LNAV/VNAV NA below -15°C (5°F) or above 54°C (130°F). DME/DME RNP-0.3 NA. For inop ALS increase LPV Cat E visibility to RVR 4000, LNAV/VNAV all Cats and LNAV Cat C/D/E visibility to 1 3/8 mile. ** RVR 1800 authorized with use of FD or AP or HUD to DA.

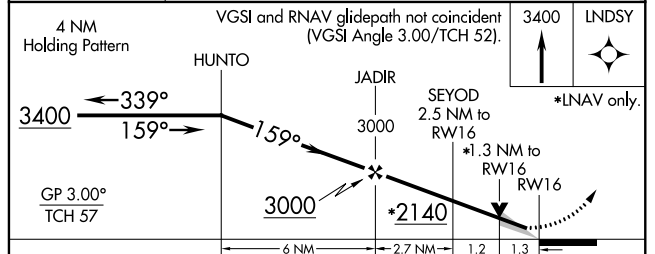
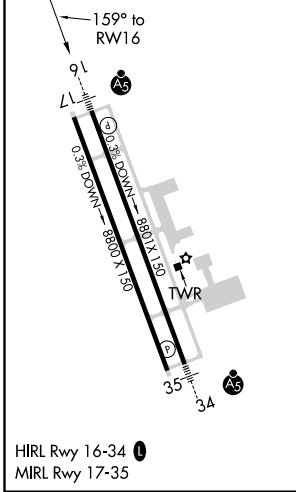


MISSED APPROACH:
Climb to 3400 direct LNDYS and hold.

ATIS 119.425	RAZORBACK APP CON * 121.0 244.575	NORTHWEST ARKANSAS RGNL TOWER * 127.1(CTAF) 0	GND CON 121.9
------------------------	---	---	-------------------------



ELEV 1288	D	TDZE 1287
-----------	----------	-----------



CATEGORY	A	B	C	D	E
LPV DA **		1487/24	200 (200-1/2)		
LNAV/VNAV DA		1722/50	435 (500-1)		
LNAV MDA	1760/24	473 (500-1/2)	1760/50	473 (500-1)	
C CIRCLING	1760-1	472 (500-1)	2040-2 1/4 752 (800-2 1/4)	2080-2 1/2 792 (800-2 1/2)	2080-2 3/4 792 (800-2 3/4)

SC-1, 12 SEP 2019 to 10 OCT 2019

SC-1, 12 SEP 2019 to 10 OCT 2019