

WAAS CH <b>78299</b> <b>W34A</b>	APP CRS <b>339°</b>	Rwy Idg TDZE Apt Elev	<b>8800</b> <b>1273</b> <b>1288</b>
--	------------------------	-----------------------------	---

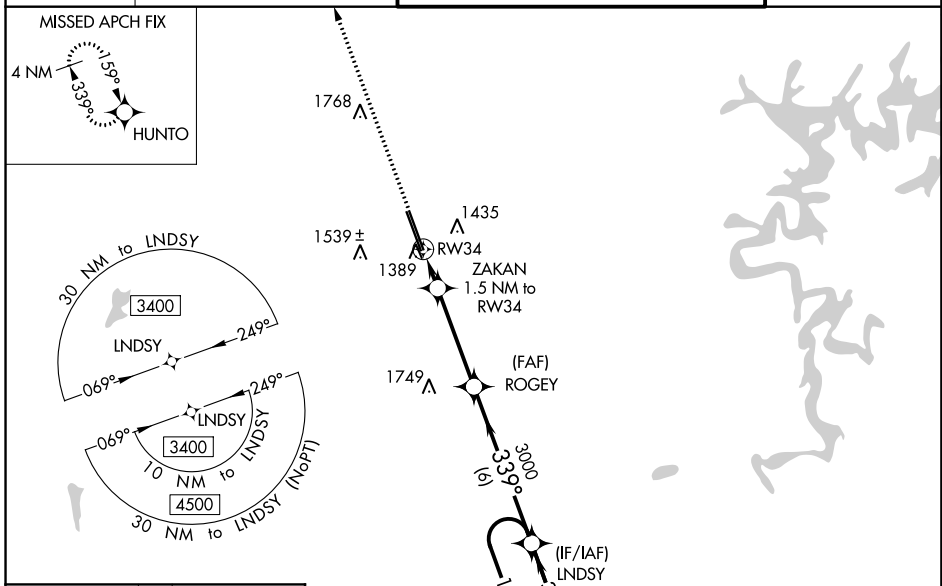
# RNAV (GPS) RWY 34

NORTHWEST ARKANSAS RGNL (X.N.A)

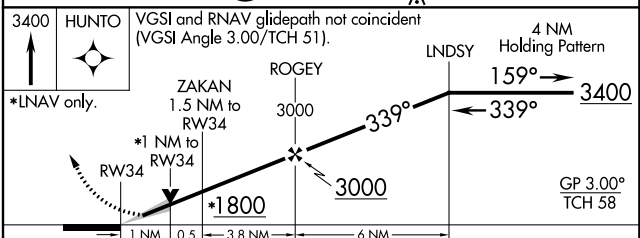
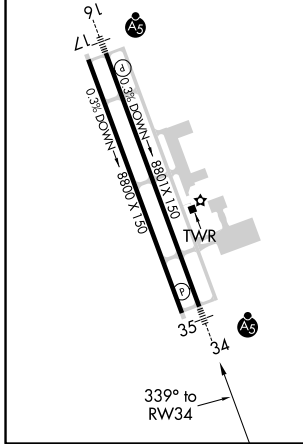
**⚠** For uncompensated Baro-VNAV systems, LNAV/VNAV NA below -15°C (5°F) or above 54°C (130°F).  
**⚠** DME/DME RNP-0.3 NA. For inop ALS, increase LPV Cat E visibility to RVR 4000, LNAV/VNAV all Cats visibility to RVR 4500, and LNAV Cats C/D/E visibility to RVR 5500.  
 \*\* RVR 1800 authorized with use of FD or AP or HUD to DA.

**MALSR**  
  
**MISSED APPROACH:** Climb to 3400 direct HUNTO and hold

ATIS <b>119.425</b>	RAZORBACK APP CON * <b>121.0 244.575</b>	NORTHWEST ARKANSAS RGNL TOWER * <b>127.1 (CTAF) 0</b>	GND CON <b>121.9</b>
------------------------	---	--	-------------------------



ELEV 1288	<b>D</b> TDZE 1273
HIRL Rwy 16-34 <b>0</b> MIRL Rwy 17-35	



CATEGORY	A	B	C	D	E
LPV DA **	1473/24		200 (200-½)		
LNAV/VNAV DA	1550/24		277 (300-½)		
LNAV MDA	1640/24	367 (400-½)	1640/35		367 (400-¾)
<b>C</b> CIRCLING	1740-1 452 (500-1)	1760-1 472 (500-1)	2040-2¼ 752 (800-2¼)	2080-2½ 792 (800-2½)	2080-2¾ 792 (800-2¾)

SC-1, 12 SEP 2019 to 10 OCT 2019

SC-1, 12 SEP 2019 to 10 OCT 2019