

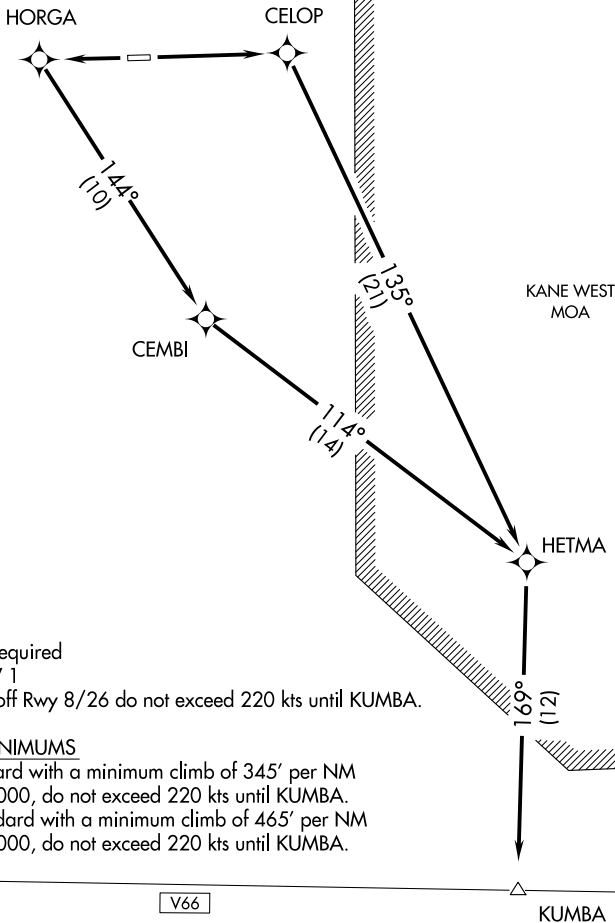
(KUMBA1.KUMBA) 18256

# KUMBA ONE DEPARTURE (RNAV)

AL-9287 (FAA)

BORREGO VALLEY (L08)  
BORREGO SPRINGS, CALIFORNIA

LOS ANGELES CENTER  
128.6 291.7  
CTAF 122.8  
AWOS-3P 126.575



- NOTE: 1. GPS required  
2. RNAV 1  
3. Take-off Rwy 8/26 do not exceed 220 kts until KUMBA.

### TAKE-OFF MINIMUMS

- Rwy 8: Standard with a minimum climb of 345' per NM to 5000, do not exceed 220 kts until KUMBA.  
Rwy 26: Standard with a minimum climb of 465' per NM to 5000, do not exceed 220 kts until KUMBA.

NOTE: Chart not to scale.



### DEPARTURE ROUTE DESCRIPTION

TAKE-OFF RUNWAY 8: Climb direct CELOP then via depicted route to KUMBA.

TAKE-OFF RUNWAY 26: Climb direct HORGA, and left turn 144° track to CEMBI, then via depicted route to KUMBA.

# KUMBA ONE DEPARTURE (RNAV)

(KUMBA1.KUMBA) 10APR08

BORREGO SPRINGS, CALIFORNIA  
BORREGO VALLEY (L08)

SW-3, 12 SEP 2019 to 10 OCT 2019

SW-3, 12 SEP 2019 to 10 OCT 2019