

APP CRS
250°

Rwy Idg **5011**
TDZE **520**
Apt Elev **520**

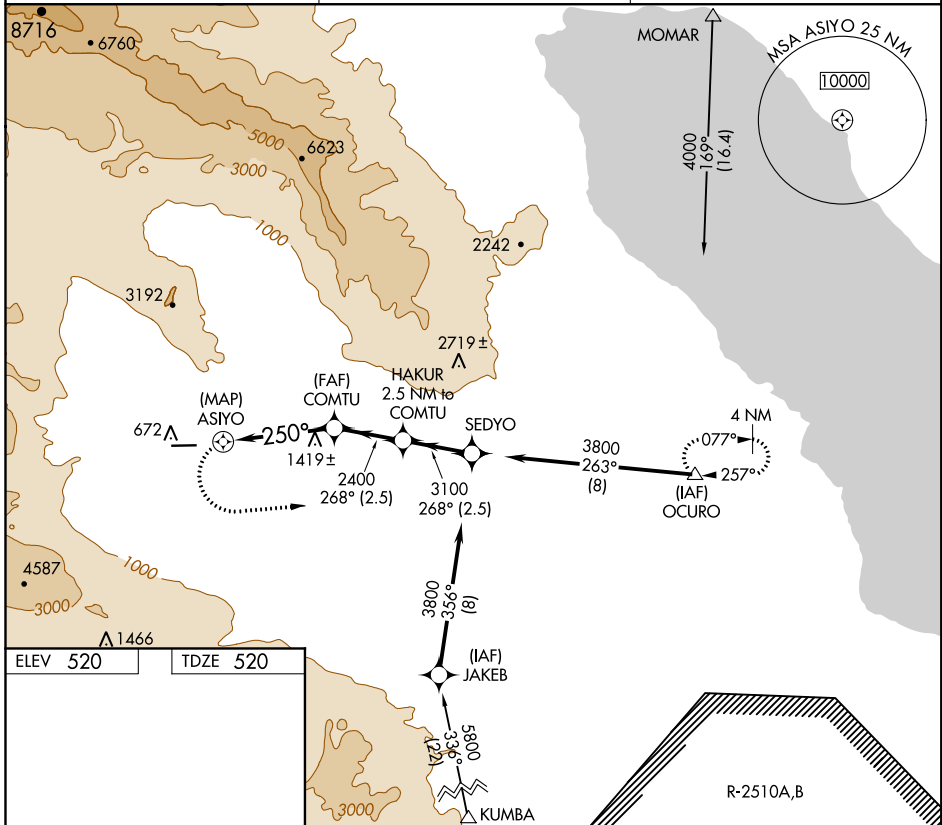
RNAV (GPS) RWY 26

BORREGO VALLEY (L08)

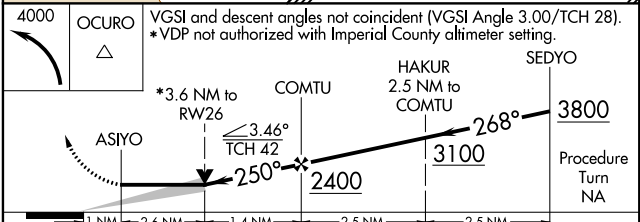
⚠ If local altimeter setting not received, use Imperial County altimeter setting and increase all MDAs 580 feet.
⚠ Circling not authorized south of Rwy 8-26.
GPS or RNP-0.3 required. DME/DME RNP-0.3 NA.

MISSED APPROACH: Climbing left turn to 4000 direct OCURO WP and hold.

AWOS-3P **126.575** LOS ANGELES CENTER **128.6 291.7** UNICOM **122.8 (CTAF) 0**



ELEV 520 TDZE 520



CATEGORY	A	B	C	D
LNAV MDA	1720-1¼ 1200 (1200-1¼)	1720-1½ 1200 (1200-1½)	1720-3	1200 (1200-3)
CIRCLING	1720-1¼ 1200 (1200-1¼)	1720-1½ 1200 (1200-1½)	1720-3	1200 (1200-3)

SW-3, 12 SEP 2019 to 10 OCT 2019

SW-3, 12 SEP 2019 to 10 OCT 2019