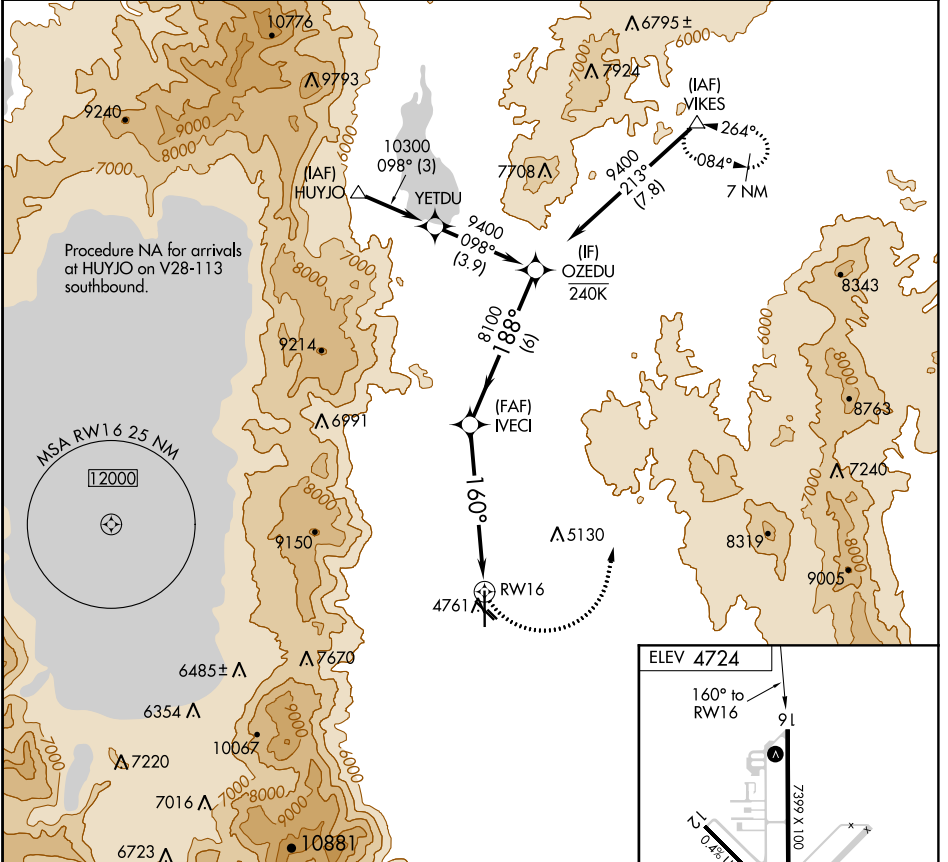


APP CRS <b>160°</b>	Rwy Idg TDZE Apt Elev	<b>N/A</b> <b>N/A</b> <b>4724</b>
------------------------	-----------------------------	---

# RNAV (GPS)-A

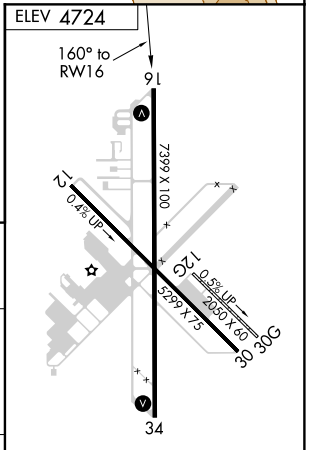
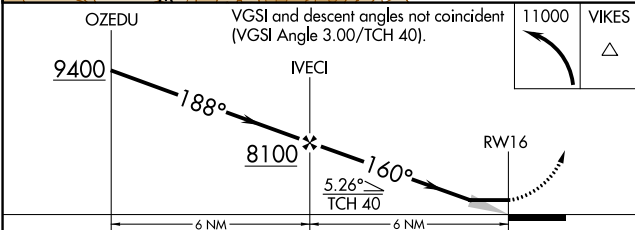
## MINDEN-TAHOE (MEV)

RNP APCH.		MISSED APPROACH: Climbing left turn to 11000 direct VIKES and hold, continue climb-in-hold to 11000.	
<p><b>▼</b> Circling NA for Cat D southwest of Rws 12 and 34.  <b>▲</b> Circling Rwy 12L, 30R NA at night.</p>			
AWOS-3PT <b>119.325</b>	NORCAL APP CON <b>119.2 279.55</b>	CLNC DEL <b>133.25</b>	UNICOM <b>123.05 (CTAF) 0</b>



SW-4, 12 SEP 2019 to 10 OCT 2019

SW-4, 12 SEP 2019 to 10 OCT 2019



CATEGORY	A	B	C	D
<b>C</b> CIRCLING	6600-1¼ 1876 (1900-1¼)	6600-1½ 1876 (1900-1½)	6600-3	1876 (1900-3)

HIRL Rwy 16-34 **0**