

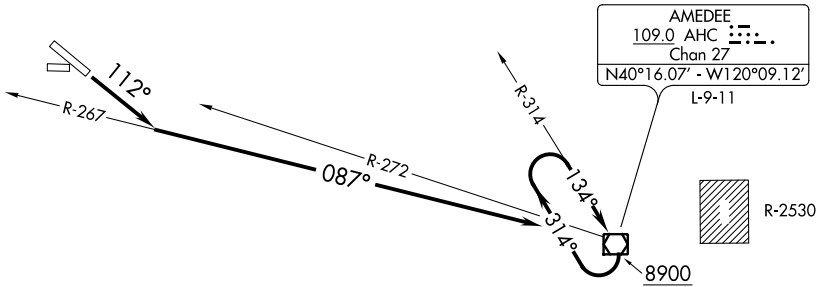
(AHC1.AHC) 16091

# AMEDEE ONE DEPARTURE (OBSTACLE)

SL-9479 (FAA)

SUSANVILLE MUNI (SVE)  
SUSANVILLE, CALIFORNIA

OAKLAND CENTER  
128.8 285.5  
CTAF  
122.8



### TAKEOFF MINIMUMS

Rwys 7, 25, 29: NA- obstacles.

Rwy 11: Standard with minimum climb of 410' per NM to 6000  
or 1900-2½ for climb in visual conditions.

NOTE: Chart not to scale.

### DEPARTURE ROUTE DESCRIPTION

TAKEOFF RUNWAY 11: Climb via 112° heading and AHC R-267 to AHC VOR/DME, Thence. . . .

Or climb in visual conditions to cross Susanville Muni Airport eastbound at or above 6000, then via AHC R-272 to AHC VOR/DME, Thence. . . .

. . . .cross AHC VOR/DME at or above 8900'. Climb in AHC holding pattern to depart AHC VOR/DME at or above 14000 before proceeding on course.

# AMEDEE ONE DEPARTURE (OBSTACLE)

(AHC1.AHC) 19FEB04

SUSANVILLE, CALIFORNIA  
SUSANVILLE MUNI (SVE)

SW-2, 12 SEP 2019 to 10 OCT 2019

SW-2, 12 SEP 2019 to 10 OCT 2019