

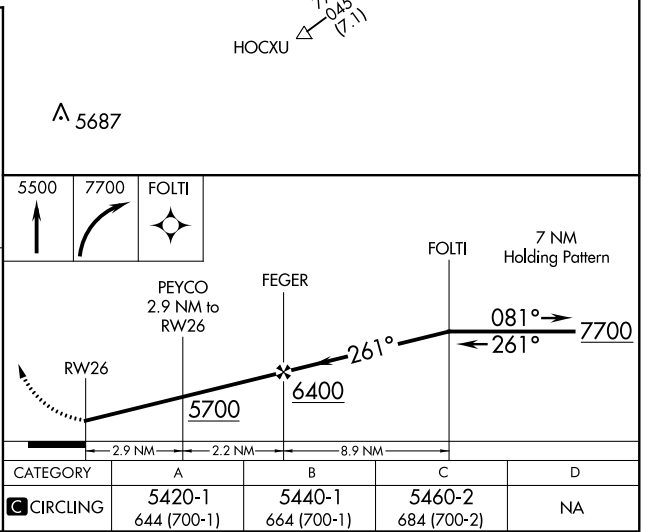
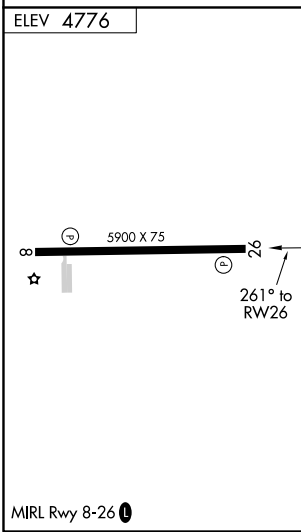
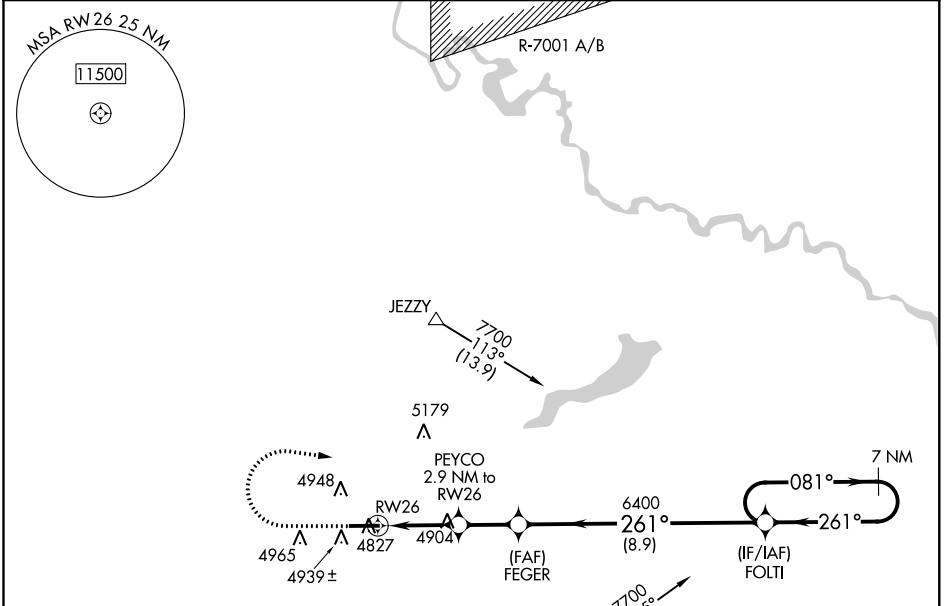
APP CRS 261°	Rwy Idg TDZE Apt Elev	N/A N/A 4776
------------------------	-----------------------------	---

RNAV (GPS)-A
PHIFER AIRFIELD (EAN)

NA Use Torrington altimeter setting; when not received, use Western Nebraska Rgnl/ William B Heilig Field altimeter setting and increase all MDA 100 feet and Cat C visibility ¼ mile. DME/DME RNP-0.3 NA. Helicopter visibility reduction below 1 SM not authorized. Night landing: Rwy 8 NA.

MISSED APPROACH: Climb to 5500 then climbing right turn to 7700 direct FOLTI and hold.

AWOS-3PT 121.125	TORRINGTON MUNI ASOS 118.375	DENVER CENTER 135.6 363.025	CTAF 122.9
----------------------------	--	---------------------------------------	----------------------



NW-1, 12 SEP 2019 to 10 OCT 2019

NW-1, 12 SEP 2019 to 10 OCT 2019