

APP CRS	Rwy Idg	5040
207°	TDZE	4985
	Apt Elev	4985

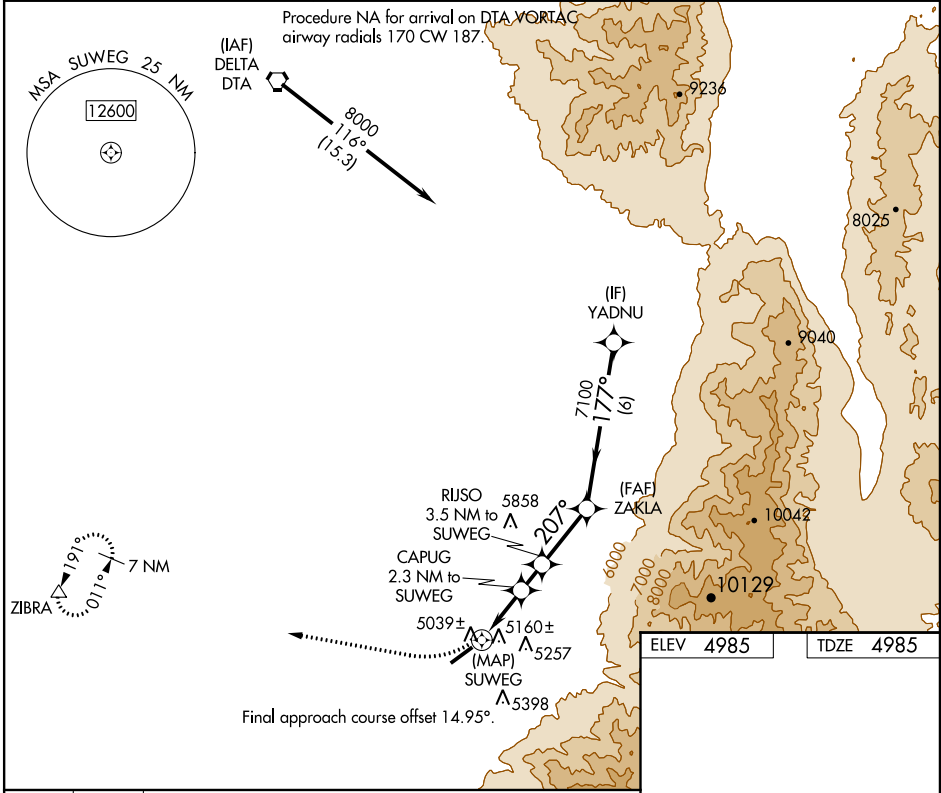
RNAV (GPS) RWY 22

FILLMORE MUNI (FOM)

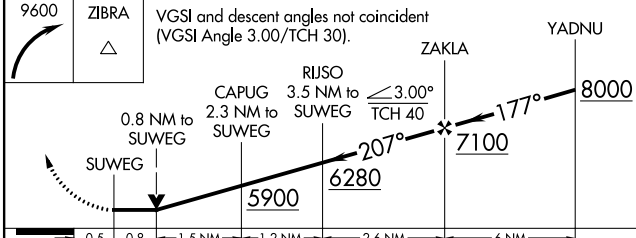
NA DME/DME RNP-0.3 NA.
 Rwy 22 helicopter visibility reduction below 3/4 SM NA.
 When local altimeter setting not received, procedure NA.

MISSED APPROACH: Climbing right turn to 9600 direct ZIBRA and hold, continue climb-in-hold to 9600.

AWOS-3 133.775	SALT LAKE CITY CENTER 125.575 379.275	UNICOM 122.8 (CTAF) 0
--------------------------	---	---------------------------------



ELEV 4985	TDZE 4985
-----------	-----------



CATEGORY	A	B	C	D
LNVA MDA	5420-1	435 (500-1)	5420-1 1/4 435 (500-1 1/4)	NA
C CIRCLING	5620-1	635 (700-1)	6200-3 1215 (1300-3)	NA

MIRL Rwy 4-22 0

SW-4, 12 SEP 2019 to 10 OCT 2019

SW-4, 12 SEP 2019 to 10 OCT 2019