

WAAS CH 42917 W04A	APP CRS 041°	Rwy Idg TDZE Apt Elev	5040 4956 4985
--	------------------------	-----------------------------	---

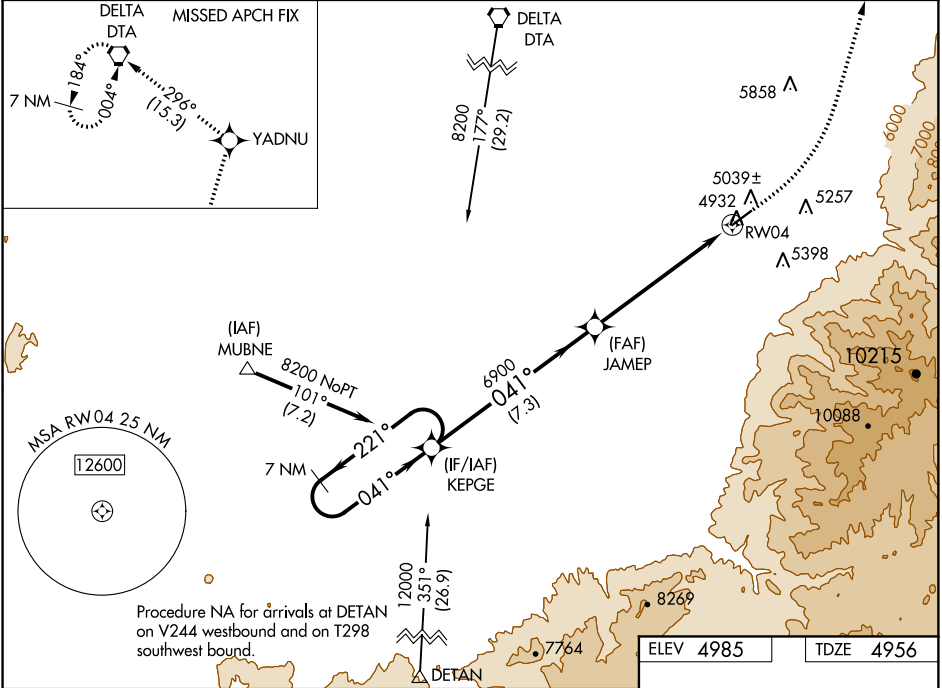
RNAV (GPS) RWY 4

FILLMORE MUNI (FOM)

NA For uncompensated Baro-VNAV systems, LNAV/VNAV NA below -24°C (-11°F) or above 54°C (130°F).
DME/DME RNP-0.3 NA.

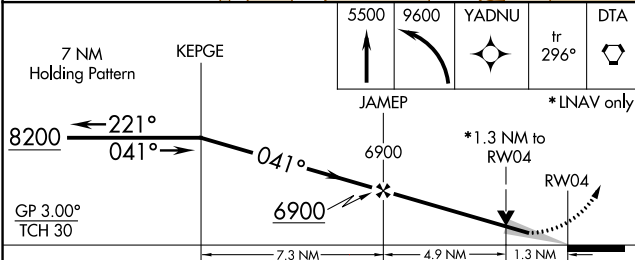
MISSED APPROACH: Climb to 5500 then climbing left turn to 9600 direct YADNU and on track 296° to DTA VORTAC and hold.

AWOS-3 133.775	SALT LAKE CITY CENTER 125.575 379.275	UNICOM 122.8 (CTAF) 0
--------------------------	---	---------------------------------

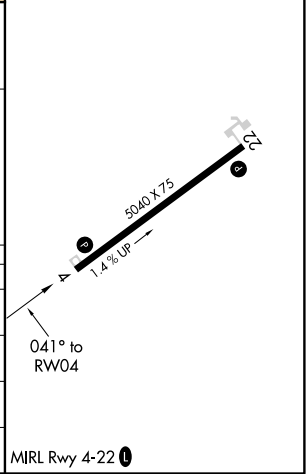


Procedure NA for arrivals at DETAN on V244 westbound and on T298 southwest bound.

ELEV 4985	TDZE 4956
-----------	-----------



CATEGORY	A	B	C	D
LPV DA	5206-1 250 (300-1)			NA
LNAV/VNAV DA	5301-1 3/8 345 (400-1 3/8)			NA
LNAV MDA	5360-1 404 (400-1)	5360-1 1/8 404 (400-1 1/8)		NA
C CIRCLING	5620-1 635 (700-1)	6200-3 1215 (1300-3)		NA



SW-4, 12 SEP 2019 to 10 OCT 2019

SW-4, 12 SEP 2019 to 10 OCT 2019