

WAAS CH 53540 W33A	APP CRS 341°	Rwy ldg 3500 TDZE 1511 Apt Elev 1511
--	------------------------	---

RNAV (GPS) RWY 33

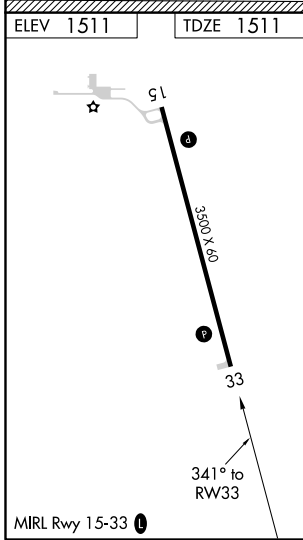
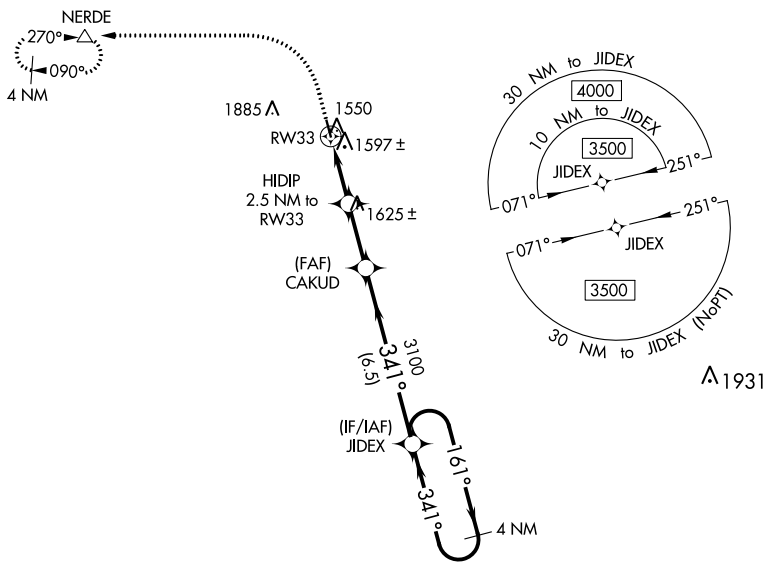
LAKOTA MUNI (5L~~/D~~)

RNP APCH.

▼ Baro-VNAV NA. Rwy 33 helicopter visibility reduction below 3/4 SM NA.
▲ NA Circling Rwy 15 NA at night. Use Devils Lake altimeter setting.

MISSED APPROACH: Climb to 2300 then climbing left turn to 3300 direct NERDE and hold.

DEVILS LAKE RGNL AWOS-3 125.875	MINNEAPOLIS CENTER 132.15 269.6	UNICOM 122.8 (CTAF) 0
---	---	---------------------------------



ELEV 1511	TDZE 1511	R-5403		
2300	3300	NERDE		
VGSI and RNAV glidepath not coincident. (VGSI Angle 3.00/TCH 26).				
*LNAV only.		4 NM Holding Pattern		
HIDIP 2.5 NM to RW33	CAKUD 3100	JIDEX 3100		
RW33	2340*	3500		
2.5 NM	2.4 NM	6.5 NM		
GP 3.00°	TCH 40			
CATEGORY	A	B	C	D
LPV DA	1824-1 1/8	313 (400-1 1/8)		NA
LNAV/VNAV DA	1824-1 1/8	313 (400-1 1/8)		NA
LNAV MDA	1920-1	409 (500-1)	1920-1 1/8	409 (500-1 1/8)
C CIRCLING	2080-1	2200-1	2260-2 1/4	749 (800-2 1/4)
	569 (600-1)	689 (700-1)		

NC-1, 12 SEP 2019 to 10 OCT 2019

NC-1, 12 SEP 2019 to 10 OCT 2019