

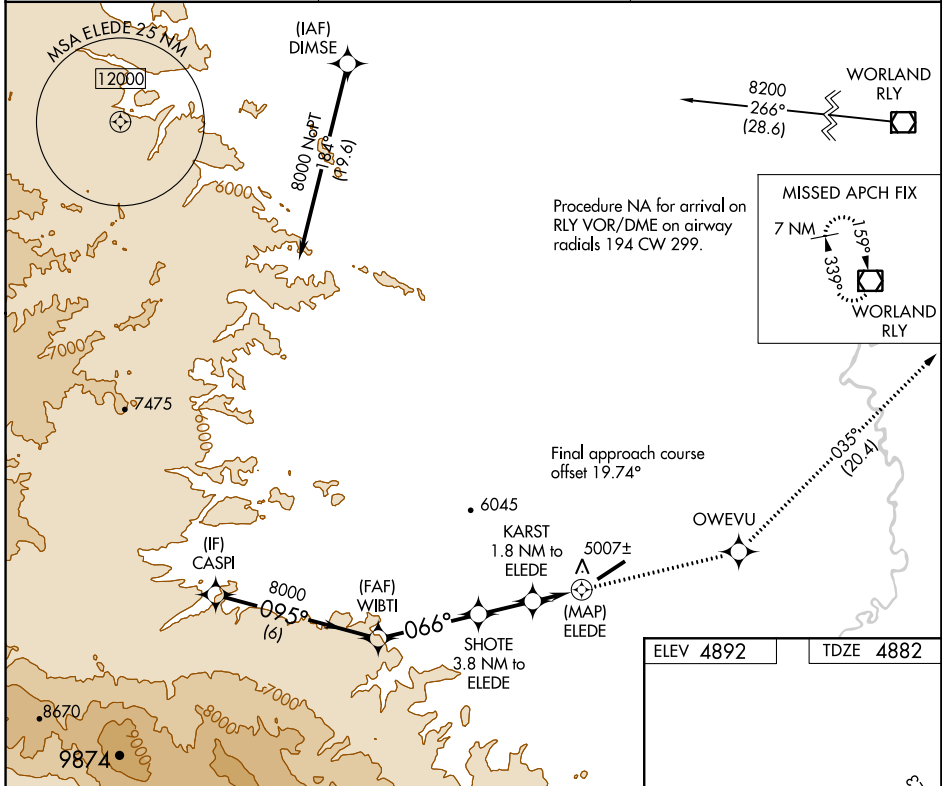
APP CRS	Rwy Idg	6370
066°	TDZE	4882
	Apt Elev	4892

RNAV (GPS) RWY 5

HOT SPRINGS COUNTY (HSG)

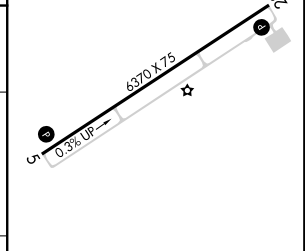
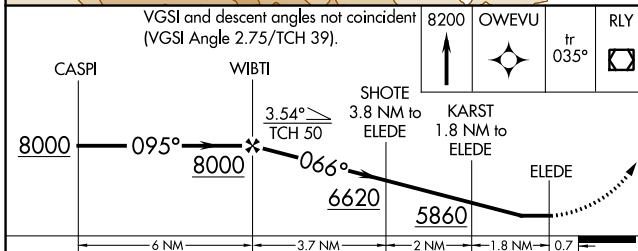
<p>⚠ Circling NA northwest of Rwy 5-23. ⚠ DME/DME RNP-0.3 NA. ⚠ Rwy 5 helicopter visibility reduction below 3/4 SM NA.</p>	<p>MISSED APPROACH: Climb to 8200 direct OWEVU and on track 035° to RLY VOR/DME and hold.</p>
---	---

AWOS-3PT 121.125	SALT LAKE CENTER 133.25 285.6	UNICOM 122.8 (CTAF)
----------------------------	---	-------------------------------



NW-1, 12 SEP 2019 to 10 OCT 2019

NW-1, 12 SEP 2019 to 10 OCT 2019



CATEGORY	A	B	C	D
LNNAV MDA	5240-1 358 (400-1)			NA
Ⓢ CIRCLING	5320-1 428 (500-1)	5540-1 648 (700-1)	5580-2 688 (700-2)	5880-3 988 (1000-2)

REIL Rwys 5 and 23	Ⓢ
MIRL Rwy 5-23	Ⓢ