

TOLEDO EXECUTIVE (TDZ)(KTdz) 6 SE UTC-5(-4DT) N41°33.90' W83°28.93'
623 B NOTAM FILE TDZ

DETROIT
H-10G, L-28J
IAP

- RWY 14-32:** H5829X100 (ASPH-GRVD) S-63, D-85, 2S-107 MIRL
- RWY 14:** REIL. PAPI(P4L)—GA 3.0° TCH 45'. Thld dsplcd 225'. Tower.
- RWY 32:** PAPI(P4L)—GA 3.0° TCH 45'. Thld dsplcd 351'. Road.
- RWY 04-22:** H3799X75 (ASPH) S-63, D-85, 2S-107 MIRL
- RWY 04:** REIL. PAPI(P4L)—GA 3.5° TCH 35'. Thld dsplcd 100'. Road.
- RWY 22:** REIL. PAPI(P4L)—GA 3.0° TCH 25'. Thld dsplcd 380'. Railroad.

RUNWAY DECLARED DISTANCE INFORMATION

- RWY 14:** TORA-5829 TODA-5829 ASDA-5182 LDA-4957
- RWY 32:** TORA-5829 TODA-5829 ASDA-5278 LDA-4927
- SERVICE:** S4 FUEL 100LL, JET A OX 1, 3 LGT ACTIVATE REIL Rwy 04, Rwy 22, and Rwy 14; PAPI Rwy 04, Rwy 22, Rwy 14, and Rwy 32; MIRL Rwy 04-22 and Rwy 14-32—CTAF.

AIRPORT REMARKS: Attended Mon-Fri continuously, Sat-Sun 1300-0100Z. Fuel: 100LL and Jet A avbl self serve or full serve. Parallel twy Rwy 04-22 and Rwy 14-32 35' wide. Seagulls on and invof arpt. Ldg fee.

AIRPORT MANAGER: (419) 838-6921

WEATHER DATA SOURCES: ASOS 121.575 (419) 838-5034.

COMMUNICATIONS: CTAF/UNICOM 123.05

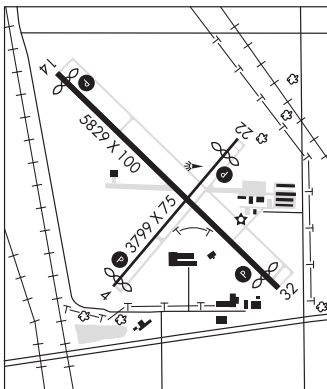
Ⓡ APP/DEP CON 126.1

CLNC DEL 125.6

CLEARANCE DELIVERY PHONE: For CD ctc Toledo Apch at 419-865-1495

RADIO AIDS TO NAVIGATION: NOTAM FILE CLF.

WATERVILLE (L) VOR/DME 113.1 VVV Chan 78 N41°27.09' W83°38.32' 048° 9.8 NM to fld. 664/2W.



TOLEDO EXPRESS (TOL)(KTOL) P (ANG) 10 SW UTC-5(-4DT) N41°35.21' W83°48.47'
683 B LRA ARFF Index—See Remarks NOTAM FILE TOL

DETROIT
H-10G, L-28J
IAP, AD

- RWY 07-25:** H10599X150 (ASPH-GRVD) S-100, D-174, 2S-175, 2D-300, 2D/2D2-550 PCN 67 F/B/W/T HIRL CL
- RWY 07:** ALSF2. TDZL. RVR-TR Trees.
- RWY 25:** MALSR. PAPI(P4L)—GA 3.0° TCH 69'. RVR-TR Trees. 0.3% up.
- RWY 16-34:** H5599X150 (ASPH-GRVD) S-100, D-174, 2S-175, 2D-300 PCN 52 F/B/W/T MIRL
- RWY 16:** REIL. PAPI(P4L)—GA 3.0° TCH 48'. Trees.
- RWY 34:** REIL. PAPI(P4L)—GA 3.0° TCH 50'.

RUNWAY DECLARED DISTANCE INFORMATION

- RWY 07:** TORA-10599 TODA-10599 ASDA-10599 LDA-10599
- RWY 16:** TORA-5599 TODA-5599 ASDA-5599 LDA-5599
- RWY 25:** TORA-10599 TODA-10599 ASDA-10599 LDA-10599
- RWY 34:** TORA-5599 TODA-5599 ASDA-5599 LDA-5599

ARRESTING GEAR/SYSTEM

RWY 07 BAK-14 BAK-12B(B) (1500 FT)

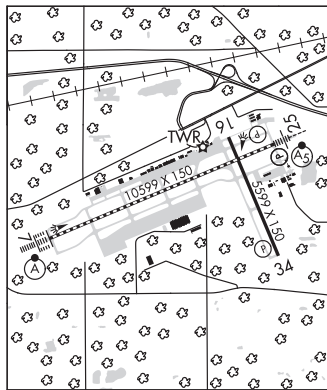
BAK-14 BAK-12B(B) (1050 FT) **RWY 25**

SERVICE: S4 FUEL 100LL, JET A OX 3 LGT SS-SR. Rwy 25 PAPI unusable byd 8° right of centerline. **MILITARY—FUEL:** A++(MIL)

AIRPORT REMARKS: Attended continuously. Fuel and svc avbl

1300-0500Z. Birds on and invof arpt. Class I, ARFF Index B. 48 PPR for unscheduled air carrier ops with greater than 10 seat PPR call 419-865-2351. Twy A west of Rwy 16 and the ramp between Twy B9 and B13 not visible from twr. Customs: Sat-Sun req must be made prior to 2200Z on Fri, phone 419-732-4446.

MILITARY REMARKS: RSTD - Tran mil acft with PPR use Twy D, avoid Twy B due to FOD haz. Twy D int Twy D1, hvy acft use min pwr to reduce FOD on ANG ramp. Ctc Comd Post or Afld OPS on 338.9 if questions. **ANG** - Afld OPS duty hr 1145-2230Z Mon-Thu, OCNL wkend, exc hol. PPR—OFFL BUS ONLY, Acft with wingspans greater than 75' can exp prk on Twy D or the BAX ramp, ctc Afld OPS DSN 580-4084/4036, C800-495-4250 extn 868-4084/868-4036. 180th Comd Post 24 hr DSN 580-4035. All inbd tran acft ctc Comd Post.



CONTINUED ON NEXT PAGE

CONTINUED FROM PRECEDING PAGE

AIRPORT MANAGER: 419-865-2351

WEATHER DATA SOURCES: ASOS (419) 865-6924 WSP.

COMMUNICATIONS: ATIS 118.75 UNICOM 122.95

Ⓡ APP/DEP CON 126.1 (360°-179°) 134.35 (180°-359°) 123.975

TOWER 118.1 GND CON 121.9 CLNC DEL 121.75

AIRSPACE: CLASS C svc ctc APP CON.

RADIO AIDS TO NAVIGATION: NOTAM FILE CLE.

WATERVILLE (L) VOR/DME 113.1 VVV Chan 78 N41°27.09' W83°38.32' 319° 11.1 NM to fld. 664/2W.

TOPHR NDB (LOMW) 219 TO N41°33.21' W83°55.27' 074° 5.5 NM to fld. 677/5W. NOTAM FILE TOL.

ILS 109.7 I-TOL Rwy 07. Class IE. LOM TOPHR NDB. Unmonitored when ATCT clsd. LOM unmonitored.

ILS 108.7 I-BQE Rwy 25. Class IA. Unmonitored when ATCT clsd. LOC unusable 0.5 NM inbound.

ASR

COMM/NAV/WEATHER REMARKS: ATIS reception intermittent byd 35 NM, 270°-320°.

TOLEDO SEAPLANE BASE SPB (2C9) 2 SSW UTC-5(-4DT) N41°37.33' W83°33.20' **DETROIT**

571 NOTAM FILE CLE

WATERWAY 04W-22W: 8000X500 (WATER)

WATERWAY 04W: Tower.

WATERWAY 22W: Trees.

WATERWAY 08W-26W: 5000X500 (WATER)

WATERWAY 08W: Trees.

WATERWAY 26W: Bldg.

SEAPLANE REMARKS: Unattended. No services or facilities. Rwy 08W-26W max acft weight 3,000 lbs. Rwy 04W-22W no weight restrictions. Pier 75 marina on north side of river, 419-242-7575.

AIRPORT MANAGER: (419) 936-3704

COMMUNICATIONS: CTAF 122.9

CLEARANCE DELIVERY PHONE: For CD ctc Toledo Apch at 419-865-1495

TOPHR N41°33.21' W83°55.27' NOTAM FILE TOL. **DETROIT**

NDB (LOMW) 219 TO 074° 5.5 NM to toledo Express. 677/5W.

TORONTO**EDDIE DEW MEM AIRPARK** (1G8) 2 NW UTC-5(-4DT) N40°28.55' W80°37.69' **DETROIT**

1084 NOTAM FILE CLE

RWY 16-34: 2268X145 (TURF) LIRL(NSTD)

RWY 16: Trees.

RWY 34: Trees.

SERVICE: LGT ACTIVATE LIRL Rwy 16-34—CTAF. Rwy 16-34 NSTD LIRL; rwy ends marked with 360° green lgts.

AIRPORT REMARKS: Attended irregularly. Deer, birds and other wildlife on and invof airport.

AIRPORT MANAGER: (740) 632-3332

COMMUNICATIONS: CTAF 122.9

CLEARANCE DELIVERY PHONE: For CD ctc Pittsburgh Apch at 412-472-5591

COMM/NAV/WEATHER REMARKS: CTAF/MULTICOM 122.9

TREMONT CITY**MAD RIVER AIRPARK** (154) 1 NE UTC-5(-4DT) N40°01.20' W83°49.71' **DETROIT**

958 TPA—1803(845) NOTAM FILE DAY

RWY 09-27: 3405X110 (TURF) LIRL(NSTD)

RWY 09: Thld dspclcd 340'. Pole.

RWY 27: Thld dspclcd 900'. Pole.

SERVICE: LGT ACTIVATE LIRL Rwy 09-27—122.8. Rwy 09-27 NSTD LIRL; only 2165' lgtd between dspclcd thlds.

AIRPORT REMARKS: Attended irregularly. Rwy 09 first 340' not marked; Rwy 27 first 505' not marked; only 2560' marked with orange cones; Rwy 09-27—dspclcd thlds marked with cones and one green lgt each side of rwy.

AIRPORT MANAGER: (937) 390-3040

COMMUNICATIONS: CTAF/UNICOM 123.0

Ⓡ COLUMBUS APP/DEP CON 118.425

CLEARANCE DELIVERY PHONE: For CD ctc Columbus Apch at 614-338-8537.

TRI-CITY (See SEBRING on page 304)