

WAYNESVILLE—ST ROBERT RGNL FORNEY FLD (TBN)(KTBN) MIL/CIV A 0 SW UTC-6(-5DT)

KANSAS CITY
H-5D, L-16G
IAP, AD

N37°44.50' W92°08.44'

1160 B Class I, ARFF Index A NOTAM FILE TBN

RWY 15-33: H6037X150 (ASPH) PCN 54 F/A/W/T HIRL

RWY 15: MALSR. REIL. PAPI(P4L)—GA 3.0° TCH 50'. RVR-R Thld dspclcd 502'. Pole.

RWY 33: MALSR. REIL. PAPI(P4R)—GA 3.0° TCH 36'. RVR-T Thld dspclcd 527'. Road. Rgt tfc.

SERVICE: FUEL 100LL, JET A LGT When twr clsd ACTIVATE MALSR Rwy 33; MALSR Rwy 15; REIL Rwy 15 and Rwy 33; PAPI Rwy 15 and Rwy 33; HIRL Rwy 15-33—125.4. **MILITARY—FUEL** No Mil Fuel Avbl. CIV: NC A — avbl 1400-2300Z† OT C573-329-4216. 100LL avbl 24 hr with credit card.

AIRPORT REMARKS: Attended Mon-Fri 1300-0400Z†. Excluding hols.

Surface visibility limited by tree line from east to south to west.

MILITARY REMARKS: Opr 1300-0400Z† Mon-Fri exc hol. **CAUTION** South end of rwy safety zone unprotected when twr clsd. **RSTD** PPR for all transient military acft DSN 581-0165/4819, C573-596-0165/4819. **MISC** Wx svc avbl Mon-Fri exc hol 1300-0400Z†. AN/FMQ-19 automated observing sys in use, augmented by human obsn when necessary during afld hrs. OT remote briefing svc avbl 26 OWS Barksdale AFB DSN 781-4775, C318-456-4775, C866-223-2398 (toll free).

AIRPORT MANAGER: 573-596-0165

WEATHER DATA SOURCES: ASOS 118.7. Frequency: 229.4

COMMUNICATIONS: CTAF 125.4 D-ATIS 118.7 229.4

® **KANSAS CITY CENTER APP/DEP CON** 128.35 284.675

FORNEY TOWER 125.4 268.7 (1300-0400Z† Mon-Fri except holidays) **GND CON** 123.75 256.8

FORNEY OPS 127.3 237.5 **ARRG OPS** 32.125 140.2 245.7

CLEARANCE DELIVERY PHONE: When ATCT clsd, for CD etc Kansas City ARTCC at 913-254-8508.

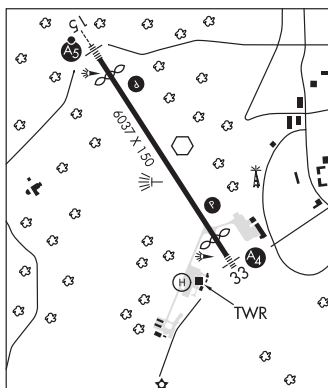
AIRSPACE: CLASS D svc 1300-0400Z† Mon-Fri exc hol; other times CLASS G.

RADIO AIDS TO NAVIGATION: NOTAM FILE TBN.

FORNEY (L) VORW 110.0 TBN N37°44.55' W92°08.34' at fld. 1155/0E. VOR unmonitored when twr clsd.

MAPLES (L) VORTAC 113.4 MAP Chan 81 N37°35.45' W91°47.31' 292° 19.1 NM to fld. 1374/6E. NOTAM FILE COU. **HIWAS.**

ILS/DME 110.9 I-TBN Chan 46 Rwy 15. Unmonitored when twr clsd. ILS classificaton code ie.



WEST PLAINS RGNL (UNO)(KUNO) 10 NW UTC-6(-5DT) N36°52.71' W91°54.16'

KANSAS CITY
H-6J, L-16G
IAP

1228 B NOTAM FILE UNO

RWY 18-36: H5101X75 (ASPH) S-30, D-39 MIRL

RWY 18: REIL. PAPI(P2L)—GA 3.0° TCH 37'.

RWY 36: REIL. PAPI(P2L)—GA 3.0° TCH 37'. Trees.

SERVICE: FUEL 100LL, JET A LGT ACTIVATE MIRL Rwy 18-36, PAPI Rwy 18 and Rwy 36 and REIL Rwy 18 and 36 after 0400Z†—CTAF.

AIRPORT REMARKS: Attended 1400-2300Z†. For attendant after 2300Z† call 417-257-1539 or 417-274-4043. Helicopter ops on and invof arpt. Ultralights on and in vicinity of arpt.

AIRPORT MANAGER: (417) 372-3997

WEATHER DATA SOURCES: ASOS 123.825 (417) 257-1313.

COMMUNICATIONS: CTAF/UNICOM 122.8

RCO 122.15 (COLUMBIA RADIO)

MEMPHIS CENTER APP/DEP CON 120.075

RADIO AIDS TO NAVIGATION: NOTAM FILE UNO.

HUTTON (L) DME 111.6 HUW Chan 53 N36°52.28' W91°54.00' at fld. 1222/0E.

