

ALBERT (See PHILIPSBURG on page 301)

ALLEGHENY CO (See PITTSBURGH on page 302)

## ALLENTOWN

ALLENTOWN QUEEN CITY MUNI (XLL)(KXLL) 2 SW UTC-5(-4DT) N40°34.22' W75°29.30'

NEW YORK  
L-30K, 33A, 34G  
IAP

399 B NOTAM FILE IPT

RWY 07-25: H3950X75 (ASPH-GRVD) S-12 MIRL

RWY 07: REIL. PAPI(P4L)—GA 3.0° TCH 41'. Trees.

RWY 25: REIL. PAPI(P4L)—GA 3.5° TCH 40'. Pole.

RWY 15-33: H3160X75 (ASPH) S-12 MIRL 0.4% up SE

RWY 15: Tree.

SERVICE: S2 FUEL 100LL, JET A LGT ACTIVATE MIRL Rwy 07-25 and Rwy 15-33, REIL Rwy 07 and Rwy 25—CTAF. Rwy 25 VGSU unusable byd 3° left of course.

AIRPORT REMARKS: Attended 1200-2300Z†. For svc after hrs ctc 610-266-6000. Deer, groundhogs and birds on and invof arpt. Noise abatement procedures in effect, for details ctc arpt manager. Rwy 15 clsd SS-SR.

AIRPORT MANAGER: 610-791-5193

WEATHER DATA SOURCES: AWOS-3 127.875 (610) 231-3111. Unavbl byd 8 nm.

COMMUNICATIONS: CTAF/UNICOM 122.7

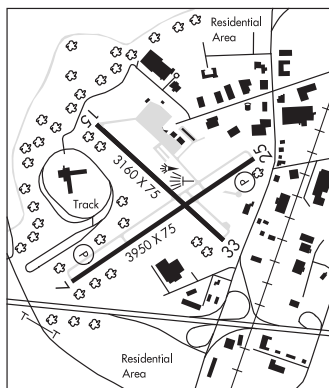
Ⓡ APP/DEP CON 119.65 (3000' and blo) 124.45 (above 3000')

CLNC DEL 118.9

CLEARANCE DELIVERY PHONE: For CD ctd Allentown Apch at 800-728-6322.

RADIO AIDS TO NAVIGATION: NOTAM FILE IPT.

EAST TEXAS (L) VORV/DME 110.2 ETX Chan 39 N40°34.86' W75°41.04' 103° 9.0 NM to fld. 742/9W.



LEHIGH VALLEY INTL (ABE)(KABE) 3 NE UTC-5(-4DT) N40°39.14' W75°26.43'

NEW YORK  
H-101, 121, L-33A, 34G  
IAP AD

394 B TPA—See Remarks LRA Class I, ARFF Index C NOTAM FILE ABE

RWY 06-24: H7599X150 (ASPH-GRVD) S-75, D-209, 2S-175,

2D-370 PCN 49 F/A/W/U HIRL CL

RWY 06: MALSR. PAPI(P4L)—GA 3.0° TCH 48'. RVR-TR

RWY 24: REIL. PAPI(P4L)—GA 3.0° TCH 60'. RVR-TR Thld displd 510'. Road.

RWY 13-31: H5800X150 (ASPH-GRVD) S-75, D-161, 2S-175,

2D-290 PCN 35 F/A/W/U HIRL

RWY 13: MALSR.

RWY 31: REIL. PAPI(P4L)—GA 3.0° TCH 54'. Pole.

## RUNWAY DECLARED DISTANCE INFORMATION

RWY 06: TORA-7599 TODA-7599 ASDA-7599 LDA-7599

RWY 13: TORA-5800 TODA-5800 ASDA-5800 LDA-5800

RWY 24: TORA-7599 TODA-7599 ASDA-7599 LDA-7089

RWY 31: TORA-5800 TODA-5800 ASDA-5800 LDA-5800

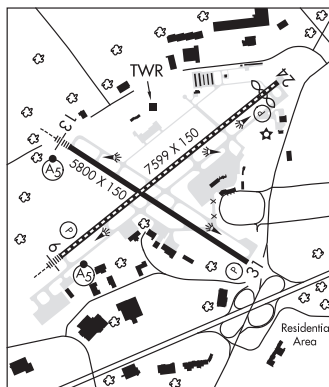
## ARRESTING GEAR/SYSTEM

RWY 13: EMAS

RWY 31: EMAS

SERVICE: S4 FUEL 100LL, JET A OX 1, 2

AIRPORT REMARKS: Attended continuously. Birds, groundhogs and deer on and invof arpt. Noise abatement procedures for turbojet powered acft in effect; preferential Rwy 06-24. Rwy 06-24 fly rwy heading until 2000'. Rwy 06, Rwy 13 and Rwy 24 departures be advised that departures are over a noise sensitive area. Rwy 31 turbojet departures turn right heading 360° until 2000' MSL. TPA—1399(1006) reciprocating props, 1999(1606) turbine powered acft. Military acft plan to park and refuel on Hangar 7 apron. Twy C rstd to maximum acft weight 12,500 lbs. Twy B south of Twy B3 rstd to acft with wingspan 118' or less. Twy B3 west of Rwy 13-31 rstd to acft with wingspan 118' or less. Twy E north of Rwy 06-24 in very poor condition with sections of broken pavement. Rstd to maximum acft weight 12,500 lbs. Twy J south of Twy A rstd to acft with wingspan 118' or less. Trml apron taxilane btn trml bldgs closed to acft with wingspan greater than 100'. Rwy 06 VGSU and ILS glidepath not coincident. Rwy 24 VGSU and ILS glidepath not coincident. U.S. Customs user fee arpt. Ldg fee. Flight Notification Service (ADCUS) avbl—2 hours PPR.



CONTINUED ON NEXT PAGE

## CONTINUED FROM PRECEDING PAGE

AIRPORT MANAGER: 610-266-6001

WEATHER DATA SOURCES: ASOS (610) 266-3579

COMMUNICATIONS: ATIS 126.975 UNICOM 122.95

ALLENTOWN RCO 122.1R 117.5T (WILLIAMSPORT RADIO)

® ALLENTOWN APP/DEP CON 119.65 (3000' & blo) 124.45 (abv 3000') 124.45 (from west)

TOWER 120.5 GND CON 121.9 CLNC DEL 124.05

AIRSPACE: CLASS C svc ctc APP CON.

RADIO AIDS TO NAVIGATION: NOTAM FILE ABE.

ALLENTOWN (L) VORTAC 117.5 FJC Chan 122 N40°43.60' W75°27.29' 182° 4.5 NM to fld. 681/10W.

TACAN AZIMUTH & DME unusable:

061°-299° byd 30 NM blo 4,000'

300°-060° byd 26 NM blo 4,500'

VOR unusable:

021°-189° byd 10 NM

190°-260° blo 9,000'

190°-260° byd 24 NM

261°-306° byd 9 NM blo 4,000'

307°-349°

350°-020° blo 3,500'

350°-020° byd 33 NM blo 4,000'

ILS 110.7 I-ABE Rwy 06. Class IIE.

ILS 111.9 I-BXY Rwy 13. Class IB.

ILS/DME 108.55 I-GUW Chan 22(Y) Rwy 24. Class "IE".

ALLENTOWN N40°43.60' W75°27.29' NOTAM FILE ABE.

NEW YORK

(L) VORTAC 117.5 FJC Chan 122 182° 4.5 NM to Lehigh Valley Intl. 681/10W.

H-10I, L-30K, 33A, 34G

TACAN AZIMUTH & DME unusable:

061°-299° byd 30 NM blo 4,000'

300°-060° byd 26 NM blo 4,500'

VOR unusable:

021°-189° byd 10 NM

190°-260° blo 9,000'

190°-260° byd 24 NM

261°-306° byd 9 NM blo 4,000'

307°-349°

350°-020° blo 3,500'

350°-020° byd 33 NM blo 4,000'

RCO 122.1R 117.5T (WILLIAMSPORT RADIO)