

## JEANNETTE

**GREENSBURG JEANNETTE RGNL** (5G8) 3 N UTC-5(-4DT) N40°22.58' W79°36.53'

**DETROIT**  
L-29C

1188 B NOTAM FILE AOO

**RWY 02-20:** H2605X50 (ASPH) MIRL 0.6% up S

**RWY 02:** Hill. Rgt tfc.

**RWY 20:** Trees.

**SERVICE:** LGT Arpt bcn opr dusk to 0600Z‡. ACTIVATE MIRL Rwy 02-20—CTAF. Rwy 02-20 no twy lgts. NSTD rwy lgt spacing. NSTD thld lgt spacing.

**AIRPORT REMARKS:** Attended Mon-Fri 1400-2200Z‡. Parachute Jumping. Deer and birds on and invof arpt with occasional rwy incursions. 240' hill/trees 4,690' south of Rwy 02. Terrain drops off rapidly on both ends of rwy.

**AIRPORT MANAGER:** 724-744-2900

**COMMUNICATIONS:** CTAF 122.9

**CLEARANCE DELIVERY PHONE:** For CD ctc Pittsburgh Apch at 412-472-5591

**RADIO AIDS TO NAVIGATION:** NOTAM FILE AGC.

**ALLEGHENY (L) VOR/DME** 110.0 AGC Chan 37 N40°16.72' W80°02.45' 082° 20.7 NM to fld. 1285/9W.  
HIWAS.

VOR portion unusable:

036°-059° byd 10 NM blo 7,000'

071°-175°

226°-261° byd 10 NM

**JERSEY SHORE** (P96) 2 E UTC-5(-4DT) N41°12.39' W77°13.55'

**DETROIT**

554 B NOTAM FILE IPT

**RWY 09-27:** 3059X130 (TURF) LIRL 0.5% up W

**RWY 09:** Thld dsplcd 300'. Road.

**SERVICE:** LGT ACTIVATE LIRL Rwy 09-27, and wind indicator—CTAF. Rwy 09-27 outlined with reflectors, and rwy lgts.

**AIRPORT REMARKS:** Attended on call. Deer on and invof arpt. Parl twy adj Rwy 09-27 clsd.

**AIRPORT MANAGER:** 570-398-1391

**COMMUNICATIONS:** CTAF/UNICOM 122.7

**CLEARANCE DELIVERY PHONE:** For CD ctc New York ARTCC at 631-468-1425.

**JOHN MURTHA JOHNSTOWN-CAMBRIA CO** (See JOHNSTOWN on page 286)

## JOHNSTOWN

**JOHN MURTHA JOHNSTOWN-CAMBRIA CO** (JST)(KJST) P (ANG ARNG AR) 3 NE UTC-5(-4DT)

**DETROIT**  
H-10H, 12I, L-29D  
IAP, DIAP, AD

N40°18.93' W78°50.08'

2284 B Class I, ARFF Index A NOTAM FILE JST

**RWY 15-33:** H7004X150 (CONC-GRVD) S-93, D-183, 2D-357, 2D/2D2-845 PCN 61 R/B/W/U HIRL

**RWY 15:** VASI(V4L)—GA 3.0° TCH 52'. Trees.

**RWY 33:** MALSR. PAPI(P4R)—GA 3.0° TCH 53'. Trees.

**RWY 05-23:** H4387X100 (ASPH-GRVD) S-62, D-87, 2S-110 PCN 39 F/A/W/T MIRL

**RWY 05:** REIL. PAPI(P4L)—GA 3.0° TCH 44'. Tree.

**RWY 23:** REIL. VASI(V4L)—GA 3.0° TCH 45'. Bldg.

**RUNWAY DECLARED DISTANCE INFORMATION**

**RWY 05:** TORA-4386 TODA-4386 ASDA-4386 LDA-4386

**RWY 15:** TORA-7003 TODA-7003 ASDA-7003 LDA-7003

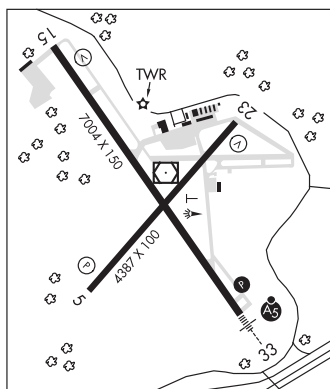
**RWY 23:** TORA-4386 TODA-4386 ASDA-4386 LDA-4386

**RWY 33:** TORA-7003 TODA-7003 ASDA-7003 LDA-7003

**SERVICE:** S4 FUEL 100LL, JET A LGT When twr clsd ACTIVATE MALSR Rwy 33, HIRL Rwy 15-33, PAPI Rwy 33, twy lgts Twy A, Twy B, Twy G, and main terminal apron—CTAF. MIRL Rwy 05-23 unavailable when twr clsd. **MILITARY—FUEL** A, A+ (1100-0400Z‡, C814-361-3500; OT 3 hr PN, C814-254-2425. \$70 fee per occurrence.) (NC-100LL)

**AIRPORT REMARKS:** Attended 1200-0400Z‡. Arpt unattended 0400-1200Z‡ daily. Deer and birds on and invof arpt. 48 hrs PPR for unscheduled air carriers ops with more than 30 passenger seats, call arpt manager 814-536-0002. Twy B between Rwy 05-23 and Twy B2 rstd to acft with wingspan 78' or less. Ldg fee.

**MILITARY REMARKS:** ARNG All fixed wing ramp use PPR ct ARNG 1300-2130Z‡ weekend C814-532-7600. Fixed wing park first 5 pads facing hangar. Ltd maintenance fixed wing. Ramp PCL twy and park 143.3.



CONTINUED ON NEXT PAGE

## CONTINUED FROM PRECEDING PAGE

AIRPORT MANAGER: 814-536-0002

WEATHER DATA SOURCES: ASOS 118.325 (814) 535-3511.

COMMUNICATIONS: CTAF 125.75 ATIS 118.325 UNICOM 122.95

JOHNSTOWN RCO 122.1R 113.0T (ALTOONA RADIO)

Ⓡ JOHNSTOWN APP/DEP CON 128.2 121.2 244.875 (1200-0400Z† or ctc 814-532-5960), other times ctc CLEVELAND CENTER 124.4 327.1 (0400-1200Z†) or ctc Cleveland ARTCC at 440-774-0234.

TOWER 125.75 253.5 (1200-0400Z†) GND CON 121.6 CLNC DEL 126.85

KEYSTONE OPS ARNG 139.15 241.35 36.5

AIRSPACE: CLASS D svc 1200-0400Z†; other times CLASS G.

RADIO AIDS TO NAVIGATION: NOTAM FILE JST.

JOHNSTOWN (L) VOR/DME 113.0 JST Chan 77 N40°19.00' W78°50.05' at fld. 2279/6W.

VOR unusable:

035°-047° byd 25 NM blo 11,000'

110°-130°

131°-135° blo 17,000'

255°-324° blo 10,000'

ILS 110.1 1-JST Rwy 33. Class IB. Glideslope unusable byd 5° left of course. Unmonitored when ATCT clsd.

COMM/NAV/WEATHER REMARKS: UNICOM frequency 122.95 avbl for ground svcs only.

**JOSEPH A HARDY CONNELLSVILLE** (See CONNELLSVILLE on page 271)

**KAMPEL** (See WELLSVILLE on page 319)

**KEATING** N41°12.90' W78°08.57' NOTAM FILE AOO.

DETROIT

(H) VORTAC 116.0 ETG Chan 107 241° 15.9 NM to Clearfield-Lawrence. 2250/10W.

H-10H, L-30I

RCO 122.1R 116.0T (ALTOONA RADIO)

**KELLER BROTHERS** (See LEBANON on page 289)

**KRALLTOWN**

**BERMUDIAN VALLEY AIRPARK** (Ø7N) 2 W UTC-5(-4DT) N40°01.01' W77°00.23'

DETROIT

470 NOTAM FILE IPT

RWY 16-34: 2200X100 (TURF)

RWY 16: Thld dspcd 370'. Trees.

RWY 34: Thld dspcd 100'. Trees.

SERVICE: S4

AIRPORT REMARKS: Attended irregularly. Ultralight activity on and infov arpt. Fld soft after prolonged rain. Rwy 16-34 rwy edges marked with white cones, rwy ends marked with orange cones. Rwy 16 and Rwy 34 dplcd thlds marked with 3 white cones each side of rwy and 2 white tires east side of rwy.

AIRPORT MANAGER: (717) 858-5063

COMMUNICATIONS: CTAF 122.9

CLEARANCE DELIVERY PHONE: For CD ctc Harrisburg Apch at 800-932-0712.

**LAKEHILL** (See MARS on page 291)