

TACOMA NARROWS (TIW)(KTIW) 4 W UTC-8(-7DT) N47°16.08' W122°34.69'

295 B TPA—1295(1000) LRA NOTAM FILE TIW MON Airport

RWY 17-35: H5002X100 (ASPH-GRVD) S-50, D-80, 2S-102, 2D-80, 2D/2D2-150 MIRL**RWY 17:** MALSR. PAPI(P4R)—GA 3.0° TCH 52'.**RWY 35:** REIL. PAPI(P4L)—GA 3.0° TCH 45'. Rgt tfc.**SERVICE:** S4 FUEL 100LL, JET A OX4 LGT When twr closed ACTIVATE MALSR Rwy 17, PAPI Rwy 17 & Rwy 35, MIRL Rwy 17-35—CTAF. PAPI Rwy 35 unusbl byd 5 deg left of cntrln.**AIRPORT REMARKS:** Attended 1500-0000Z†. Deer on and invof arpt. Noise sensitive arpt; for NS ABTMT and tfc procedures call arpt office 253-798-8550. For customs call 253-593-6338 ext #2.**AIRPORT MANAGER:** 253-798-2421**WEATHER DATA SOURCES:** ASOS 124.05 (253) 858-6507. LAWRS.**COMMUNICATIONS:** CTAF 118.5 ATIS 124.05 UNICOM 122.95

Ⓡ SEATTLE APP/DEP CON 120.1

TOWER 118.5 (1600-0400Z†) **GND CON** 121.8**CLEARANCE DELIVERY PHONE:** For CD when ATCT is clsd ctc Seattle Apch at 206-214-4723.**AIRSPACE:** CLASS D svc 1600-0400Z†; other times CLASS E.**RADIO AIDS TO NAVIGATION:** NOTAM FILE TCM.**MCCHORD (T) VORTAC** 109.6 TCM Chan 33 N47°08.86'

W122°28.50' 315° 8.4 NM to fld. 283/15E.

VORTAC No NOTAM MP 0800-1700Z† and 2100-2300Z† Wed VOR unusable:

033°-043° byd 12 NM blo 8,500'

043°-063° byd 12 NM

063°-076° byd 19 NM

076°-082° byd 19 NM blo 8,000'

076°-082° byd 24 NM blo 10,000'

142°-153° byd 12 NM

153°-163° byd 12 NM blo 5,800'

207°-277° byd 12 NM

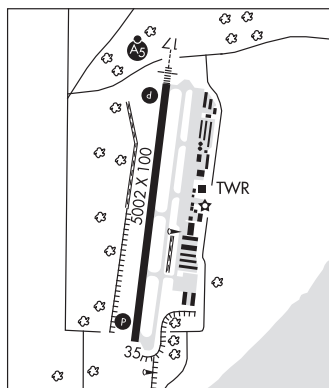
307°-082° byd 10 NM blo 8,000'

307°-347° byd 12 NM

347°-033° byd 19 NM

VOR OTS ufn

ILS 109.1 I-TIW Rwy 17. Class IA. Unmonitored when ATCT clsd.

COMM/NAV/WEATHER REMARKS: Emerg freq 121.5 not avbl at twr.**TATOOSH** N48°17.99' W124°37.62' NOTAM FILE SEA.

(H) VORTACW 112.2 TOU Chan 59 151° 22.0 NM to Quillayute. 1650/22E. HIWAS.

RCO 122.25 (SEATTLE RADIO)

SEATTLE

H-1B, L-1D

TEKOA**WILLARD FLD** (73S) 2 NE UTC-8(-7DT) N47°14.13' W117°02.62'

2520 B NOTAM FILE SEA

RWY 04-22: H2261X40 (ASPH) MIRL**RWY 04:** Thld dsplcd 190'. Trees.**RWY 22:** Thld dsplcd 240'.**SERVICE:** S4 FUEL 100LL LGT ACTIVATE MIRL Rwy 04-22—122.8.**AIRPORT REMARKS:** Unattended. Self svc fuel with credit card. Parachute Jumping. Grass areas not avbl for acft ops.**AIRPORT MANAGER:** 509-284-6145**COMMUNICATIONS:** CTAF 122.9**CLEARANCE DELIVERY PHONE:** For CD ctc Seattle ARTCC at 253-351-3694.

SEATTLE

TIETON STATE (See RIMROCK on page 214)