

BLACKFOOT

MCCARLEY FLD (U02) 1 N UTC-(6EDT) N43°12.56' W112°20.98'

SALT LAKE CITY
L-11C
IAP

4492 B NOTAM FILE BOI
RWY 01-19: H4311X75 (ASPH) S-12.5 MIRL
RWY 01: PAPI(P2L)—GA 3.0° TCH 45'. Fence.
RWY 19: PAPI(P2L)—GA 3.25° TCH 42'. Tree.

SERVICE: S6 FUEL 100LL

AIRPORT REMARKS: Attended Mon-Sat 1500-0000Z†. Bird activity on and invof Rwy 01 thld. Considerable air-gnd ops during growing season.

AIRPORT MANAGER: (208) 709-9719

COMMUNICATIONS: CTAF/UNICOM 122.8

SALT LAKE CENTER APP/DEP CON 128.35

CLEARANCE DELIVERY PHONE: For CD ctc Salt Lake ARTCC at 801-320-2568.

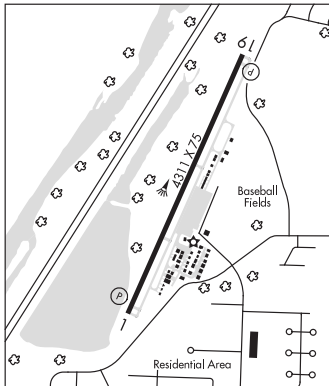
RADIO AIDS TO NAVIGATION: NOTAM FILE PIH.

POCATELLO (H) VOR/DME 112.6 PIH Chan 73 N42°52.22'
W112°39.13' 016° 24.3 NM to fld. 4433/17E.

VOR portion unusable:
060°-130° byd 25 NM blo 13,500'

DME portion unusable:
060°-130° byd 25 NM blo 17,000'
160°-175° byd 25 NM blo 13,000'

IDAHO FALLS (H) VOR/DME 113.85 IDA Chan 85(Y) N43°31.14'
W112°03.84' 199° 22.4 NM to fld. 4724/15E. NOTAM FILE IDA.



BLISS N42°54.99' W114°47.05'
RCO 122.4 (BOISE RADIO)

SALT LAKE CITY
L-11C

BOISE AIR TERMINAL/GOWEN FLD (BOI)(KBOI) P (ANG ARNG) 3 S UTC-(6EDT) N43°33.86'

SALT LAKE CITY
H-1C, 3C, L-11B
IAP, AD

W116°13.37'
2872 B AOE Class I, ARFF Index C NOTAM FILE BOI

RWY 10L-28R: H10000X150 (ASPH-GRVD) S-100, D-210, 2S-175, 2D-446, 2D/2D2-947 PCN 105F/C/W/T HIRL

RWY 10L: REIL. PAPI(P4R)—GA 3.0° TCH 53'. Antenna. 0.5% up.

RWY 28R: PAPI(P4L)—GA 3.0° TCH 70'. Rgt tfc. 0.3% down.

RWY 10R-28L: H9763X150 (ASPH-GRVD) S-100, D-210, 2S-175, 2D-430, 2D/2D2-994 PCN 76 F/B/W/T HIRL CL

RWY 10R: ALSF2. TDZL. VASI(V4L)—GA 3.0° TCH 64'. RVR-TMR Rgt tfc. 0.5% up.

RWY 28L: MALSR. TDZL. VASI(V4L)—GA 3.0° TCH 50'. RVR-TMR

RUNWAY DECLARED DISTANCE INFORMATION

RWY 10L:TORA-10000 TODA-10000 ASDA-10000 LDA-10000

RWY 10R:TORA-9763 TODA-9763 ASDA-9763 LDA-9763

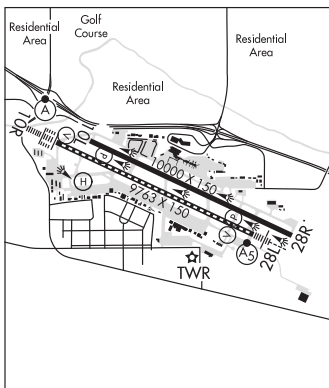
RWY 28L:TORA-9763 TODA-9763 ASDA-9763 LDA-9763

RWY 28R:TORA-10000 TODA-10000 ASDA-10000 LDA-10000

SERVICE: S4 FUEL 100LL, JET A+ 0X 1, 2, 3, 4 LGT Arpt lgt sched dusk to dawn. **MILITARY—JASU** 1(MC-1M) 6(AM32A-60)

4(A/M32A-86) **FUEL** A++ (Mii), A, A+ (1300-0600Z†Mon-Fri; 1300-0300Z† Sat-Sun and hol, call C208-338-1833, 25 min PN rqr, \$90 fee.) (NC-100LL) **FLUID PRESAIR OIL** O-133-148(Mii) SOAP

AIRPORT REMARKS: Attended continuously. Extv helicopter ops sfc to 3500' within 1 NM east and west and 5 NM south of Rwy 10R-28L. Moderate migratory bird activity within 5 NM of the arpt Oct-Mar. Security rqrs PPR with FBO due to locked gates and fencing btn hrs 0500-1400Z† for ingress/egress to arpt. Aerodrome offl bus only for all mil acft. Mandatory PPR required for all mil acft arr at KBOI—regardless of where acft is parking—prior to arr, nlt 72 hr if parking on ANG ramp at <http://www.124thfighterwing.af.mil/>. Strictly enforced. PPR valid +/- 30 min. Tran acft rstd to str-in full stop only. ANG opr 1400-2330Z†, clsd wknd, hol and down Mon. Tran svc unvbl outside of ANG opr hrs. For FBO svc and parking ctc FBO. Tran svc and gnd eqpt very limited other than A10 acft. Tran must be able to fuel/svc own acft. In event of go-around or missed-apch exp rtf. All twys clsd to acft with wingspan over 147' 1", exc with 1 hr PPR 208-972-8420. The arpt req flight crews parking on he coml ramp ctc gnd ctd on 121.7 MHZ prior to pushback. Twy B east of Twy C clsd to acft with wingspan over 118' when east arm/dearm pad is in use. Twy J north of Twy F clsd to acft with wingspan over 94' when west arm/dearm pad is in use. Twy S clsd to acft with wingspan over 95 ft. Portions of Twy K and the southwest ramp not visible to twr. Flight Notification Service (ADCUS) avbl Mon-Fri 1500-0000Z†, weekends if notified by Thur 0000Z†. NOTE: See Special Notices—Continuous Power Facilities.



CONTINUED ON NEXT PAGE

CONTINUED FROM PRECEDING PAGE

AIRPORT MANAGER: (208) 972-8420

WEATHER DATA SOURCES: ASOS (208) 388-4640

COMMUNICATIONS: D-ATIS 123.9 UNICOM 122.95

RCO 122.2 122.6 (BOISE RADIO)

Ⓡ BIG SKY APP/DEP CON 119.6 (More than 15NM from BOI) 126.9 (Within 15NM of BOI)

TOWER 118.1 119.0 GND CON 121.7 CLNC DEL 125.9

AIRSPACE: CLASS C svc ctc APP CON.

VOR TEST FACILITY (VOT) 116.7

RADIO AIDS TO NAVIGATION: NOTAM FILE BOI.

(H) VORTACW 113.3 BOI Chan 80 N43°33.17' W116°11.53' 280° 1.5 NM to fld. 2877/17E.

VOR portion unusable:

001°-044° byd 22 NM blo 11,000'

001°-044° byd 32 NM blo 14,500'

045°-071° byd 32 NM blo 12,500'

072°-084° byd 32 NM blo 10,500'

TACAN AZIMUTH & DME portion unusable:

010°-060° byd 12 NM blo 13,000'

010°-060° byd 27 NM blo 15,500'

113°-155° byd 30 NM blo 7,000'

348°-010° byd 20 NM blo 13,000'

348°-010° byd 27 NM blo 15,500'

ILS/DME 111.1 I-BOI Chan 48 Rwy 10R. Class IIIE. DME unusable byd 33° right of LOC course.

ILS/DME 110.15 I-AAD Chan 38(Y) Rwy 28R. Class IE. DME unusable byd 12 NM blo 6,000'. Glideslope unusable byd 06 NM blo 4,700'. LOC unusable byd 12 NM blo 6,000'.

BONNERS FERRY

BOUNDARY CO (65S) 2 NE UTC-8(-7DT) N48°43.56' W116°17.71'

2337 B NOTAM FILE BOI

RWY 02-20: H4002X75 (ASPH) S-25 MIRL 0.5% up NE

RWY 02: PAPI(P2L)—GA 3.5° TCH 37'.

RWY 20: Road.

SERVICE: S3 FUEL 100LL, JET A OX 4 LGT ACTIVATE MIRL Rwy

02-20—CTAF. VASI Rwy 20 opr continuously.

AIRPORT REMARKS: Attended Mon-Fri 1600-0100Z†, Sat 1600-0000Z†.

Cold temperature restricted airport. Altitude correction required at or below -8C.

AIRPORT MANAGER: 208-267-3711

WEATHER DATA SOURCES: AWOS-3PT 132.575 (208) 267-3995.

COMMUNICATIONS: CTAF/UNICOM 123.0

SEATTLE CENTER APP/DEP CON 123.95

CLEARANCE DELIVERY PHONE: For CD ctc Seattle ARTCC at 253-351-3694.

RADIO AIDS TO NAVIGATION: NOTAM FILE MLP.

MULLAN PASS (H) VORW/DME 117.8 MLP Chan 125 N47°27.41'

W115°38.76' 326° 80.5 NM to fld. 6100/15E. HIWAS.

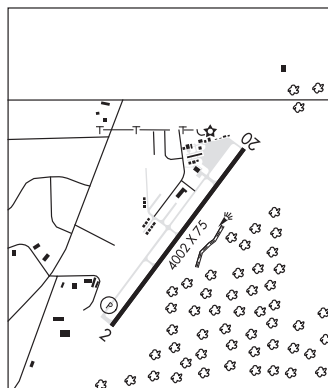
VOR portion unusable:

060°-090° byd 20 NM blo 9,500'

GREAT FALLS

L-13B

IAP



BOUNDARY CO (See BONNERS FERRY on page 35)

BROOKS SPB (See COEUR D'ALENE on page 40)

BRUCE MEADOWS (See STANLEY on page 71)