

LANDMARK USFS (ØUØ) 1 SE UTC-7(-6DT) N44°38.53' W115°32.00'

GREAT FALLS

6662 NOTAM FILE BOI

RWY 16-34: 4000X100 (TURF-DIRT) 0.3% up S

RWY 16: Trees.

RWY 34: Tree.

AIRPORT REMARKS: Unattended. No telephone avbl at arpt. Wildlife on and invof arpt. No winter maintenance. No line of sight between rwy ends. Arpt located in high mountain valley surrounded by high terrain. Rwy 16-34 edges marked with white rock markers.

AIRPORT MANAGER: (208) 382-7400

COMMUNICATIONS: CTAF 122.9

CLEARANCE DELIVERY PHONE: For CD ctc Salt Lake ARTCC at 801-320-2568.

LEADORE (UØØ) 0 S UTC-7(-6DT) N44°40.39' W113°21.15'

GREAT FALLS

6029 NOTAM FILE BOI

RWY 11-29: H3500X140 (ASPH-TURF) RWY LGTS(NSTD) 0.5% up E

RWY 11: Pole.

RWY 29: Fence.

RWY 16-34: 2903X90 (TURF) 1.4% up S

RWY 16: Pole.

RWY 34: Fence.

AIRPORT REMARKS: Unattended. Numerous buildings in apch to Rwy 11. Rwy 11-29 2300' asph section starting at Rwy 11 end. Rwy 16-3' road at 200' on centerline, +30' pole 250' 60' left, numerous other obstruction to +10' at 100' to 400' in the apch zone. Agricultural irrigation equipment +15' may be located within 50' of rwy end 34. Rwy 11-29 surface very rough. Rwy 16-34 surface extremely rough. Rwy 11-29 NSTD rwy lgts. Rwy 11 last 1200' not lgtd.

AIRPORT MANAGER: (208) 316-4521

COMMUNICATIONS: CTAF 122.9

CLEARANCE DELIVERY PHONE: For CD ctc Salt Lake ARTCC at 801-320-2568.

LEE WILLIAMS MEM (See MIDVALE on page 57)

LEMHI CO (See SALMON on page 68)

LEWISTON

LEWISTON-NEZ PERCE CO (LWS)(KLWS) 2 S UTC-8(-7DT) N46°22.47' W117°00.92'

SEATTLE
H-1C, L-13B
IAP, AD

1442 B TPA—See Remarks Class I, ARFF Index A NOTAM FILE LWS MON Airport

RWY 08-26: H6511X150 (ASPH-GRVD) S-150, D-180, 2S-175,

2D-400 PCN 56 F/A/X/T HIRL

RWY 08: REIL. VASI(V4L)—GA 3.0° TCH 45'. Rgt tfc.

RWY 26: MALSR. PAPI(P4L)—GA 3.0° TCH 51'. Tree.

RWY 12-30: H5002X100 (ASPH-GRVD) S-70, D-94, 2S-119, 2D-150

PCN 18 F/A/X/T MIRL 1.4% up SE

RWY 12: REIL. PAPI(P4L)—GA 3.0° TCH 40'. Rgt tfc.

RWY 30: VASI(V4R)—GA 3.0° TCH 47'. Antenna.

RUNWAY DECLARED DISTANCE INFORMATION

RWY 08: TORA-6512 TODA-6512 ASDA-6512 LDA-6512

RWY 12: TORA-5000 TODA-5000 ASDA-5000 LDA-5000

RWY 26: TORA-6512 TODA-6512 ASDA-6512 LDA-6512

RWY 30: TORA-5000 TODA-5000 ASDA-5000 LDA-5000

SERVICE: S4 FUEL 100, 100LL, JET A LGT When twr clsd ACTIVATE

MALSR Rwy 26 and REIL Rwy 08—CTAF.

AIRPORT REMARKS: Attended 1330-0500Z. CLOSED to unscheduled air carrier ops with more than 30 pax seats 1500-0100Z. exc PPR call arpt mgr 208-746-4471 other times call station number 4, 208-743-0172. Frequent no radio AG acft activity invof arpt. TPA—Heavy and turbine powered acft 3002(1560) all others 2502(1060).

AIRPORT MANAGER: (208) 746-4477

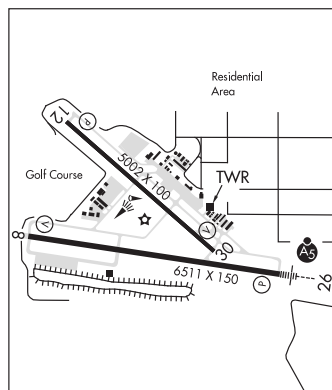
WEATHER DATA SOURCES: ASOS 135.575 (208) 746-4185. LAWRS.

COMMUNICATIONS: CTAF 119.4 UNICOM 122.95

RCO 122.35 (BOISE RADIO)

SEATTLE CENTER APP/DEP CON 123.95

TOWER 119.4 (1400-0600Z) GND CON 121.9



CONTINUED ON NEXT PAGE

CONTINUED FROM PRECEDING PAGE

AIRSPACE: CLASS D svc 1400-0600Z±; other times CLASS E.

RADIO AIDS TO NAVIGATION: NOTAM FILE LWS.

NEZ PERCE (L) VORW/DME 108.2 MQG Chan 19 N46°22.89' W116°52.17' 246° 6.1 NM to fld. 1734/20E.
DME unmonitored.

VOR portion unusable:

075°-115° byd 20 NM blo 12,000'
115°-155° byd 25 NM blo 6,900'
280°-290° byd 20 NM blo 4,200'
290°-335° byd 25 NM blo 4,000'

ILS 109.7 I-LWS Rwy 26. Class IE. Unmonitored when ATCT clsd. Autopilot coupled approaches not authorized blo 2,500'.

SNAKE RIVER SPB (78U) 1 SW UTC-8(-7DT) N46°23.99' W117°03.06' **SEATTLE**

735 NOTAM FILE BOI

WATERWAY N-S: 3000X150 (WATER)

WATERWAY S: P-line.

SEAPLANE REMARKS: Attended Apr-Oct 1500Z±-dusk and Nov-Mar irregularly. P-lines cross Snake River north, south above and below Idg area. Bridge across Snake River N of Idg area. Ldg area within Lewiston-Nez Perce County arpt tfc area, ctc Lewiston twr. Waterway N-S waterlane length and width varies. Heavy boat tfc in vicinity of spb. No beaching gear or mooring buoys avbl. Acft may dock at marina if space is aval.

AIRPORT MANAGER: 208-799-5015

COMMUNICATIONS: CTAF 122.9

CLEARANCE DELIVERY PHONE: For CD ctc Seattle ARTCC at 253-351-3694.

LIBERATOR N42°58.96' W115°46.46' NOTAM FILE BOI **SALT LAKE CITY**
(L) VORW 114.9 LIA 354° 9.1 NM to Mountain Home Muni. 2990/18E. **L-11B**

LOWER LOON CREEK (See CHALLIS on page 39)

LOWMAN

WARM SPRINGS CREEK (ØU1) 13 NE UTC-7(-6DT) N44°08.53' W115°18.84' **SALT LAKE CITY**

4831 NOTAM FILE BOI

RWY 02-20: 2850X135 (TURF)

RWY 02: Tree.

RWY 20: Trees.

AIRPORT REMARKS: Unattended. No telephone avbl at arpt. Recommend land Rwy 02, tkf Rwy 20, when wind conditions allow. No line of sight between rwy ends. No winter maintenance. Rwy 02-20 edges and thlds marked with white rocks.

AIRPORT MANAGER: 208-334-8775

COMMUNICATIONS: CTAF 122.9

CLEARANCE DELIVERY PHONE: For CD ctc Salt Lake ARTCC at 801-320-2568.

LUCILE

BIG BAR (1DA) 9 W UTC-8(-7DT) N45°32.07' W116°31.86' **SALT LAKE CITY**

1236 NOTAM FILE BOI Not insp.

RWY 17-35: 1203X30 (TURF-DIRT)

AIRPORT MANAGER: 541-975-5418

COMMUNICATIONS: CTAF 122.9

CLEARANCE DELIVERY PHONE: For CD ctc Seattle ARTCC at 253-351-3694.

MACKEY

COPPER BASIN (ØU2) 12 SW UTC-7(-6DT) N43°48.12' W113°49.89' **SALT LAKE CITY**

7920 NOTAM FILE BOI

RWY 13-31: 4700X100 (TURF) 1.7% up SE

RWY 13: Road.

AIRPORT REMARKS: Unattended. CLOSED to wheeled acft winters. No winter maintenance. Livestock on and in vicinity of arpt. Twy to midfield tiedowns 15' wide, -1' ditch adjacent to edges of twy. Rwy 13-31 edges and thresholds marked with white rocks. Arpt located in high mountain valley surrounded by high mountains.

AIRPORT MANAGER: 208-334-8775

COMMUNICATIONS: CTAF 122.9

CLEARANCE DELIVERY PHONE: For CD ctc Salt Lake ARTCC at 801-320-2568.