

MONROE RGNL (MLU)(KMLU) 3 E UTC-6(-5DT) N32°30.65' W92°02.26'

79 B Class I, ARFF Index B NOTAM FILE MLU

RWY 04-22: H7505X150 (ASPH-GRVD) S-75, D-170, 2S-175, 2D-290 PCN 111F/D/X/T HIRL

RWY 04: MALSR. PAPI(P4L)—GA 3.0° TCH 50'. RVR-T

RWY 22: MALSR. PAPI(P4L)—GA 3.0° TCH 54'. RVR-R

RWY 18-36: H5001X150 (ASPH) S-60, D-75, 2S-95, 2D-130

RWY 18: Trees.

RWY 36: Trees.

RWY 14-32: H4999X150 (ASPH) S-75, D-170, 2S-175, 2D-290 PCN 32 R/C/X/T MIRL

RWY 14: REIL. PAPI(P4L)—GA 3.0° TCH 50'.

RWY 32: REIL. PAPI(P4L)—GA 3.0° TCH 50'.

RUNWAY DECLARED DISTANCE INFORMATION

RWY 04: TORA-7505 TODA-7505 ASDA-7505 LDA-7505

RWY 14: TORA-4999 TODA-4999 ASDA-4999 LDA-4999

RWY 18: TORA-5001 TODA-5001 ASDA-5001 LDA-5001

RWY 22: TORA-7505 TODA-7505 ASDA-7505 LDA-7505

RWY 32: TORA-4999 TODA-4999 ASDA-4999 LDA-4999

RWY 36: TORA-5001 TODA-5001 ASDA-5001 LDA-5001

SERVICE: S4 FUEL 100LL, JET A OX1 LGT When twr closed

ACTIVATE MALSR Rwy 04 and Rwy 22; HIRL Rwy 04-22; MIRL Rwy

14-32, Twy lghts—CTAF. PAPI Rwy 04, Rwy 22, Rwy 14 and Rwy 32 operate continuously.

AIRPORT REMARKS: Attended continuously. Twys J and E east of Rwy 04-22 not avbl for air carrier ops with over 9 passenger seats. Bird activity on and in/ovf aprt. SW 6000' grvd ASPH. Taxiway E clsd to aircraft with wing span over 90' East of Rwy 04-22.

AIRPORT MANAGER: 318-329-2461

WEATHER DATA SOURCES: ASOS 125.05 (318) 327-5675. HIWAS 117.2 MLU. LLWAS.

COMMUNICATIONS: CTAF 118.9 ATIS 125.05 UNICOM 122.95

RCO 122.25 (DE RIDDER RADIO)

® APP/DEP CON 118.15 (Within 20 NM blw 4000') 126.9 (1200-0400Z‡)

® FORT WORTH CENTER APP/DEP CON 126.325 (0400-1200Z‡)

TOWER 118.9 (1200-0400Z‡) GND CON 121.9 CLNC DEL 121.65

CLEARANCE DELIVERY PHONE: For CD when ATCT is clsd ctc Fort Worth ARTCC at 817-858-7584

AIRSPACE: CLASS D svc 1200-0400Z‡; other times CLASS E.

TRSA svc ctc APP CON within 25 NM below 7000

RADIO AIDS TO NAVIGATION: NOTAM FILE MLU.

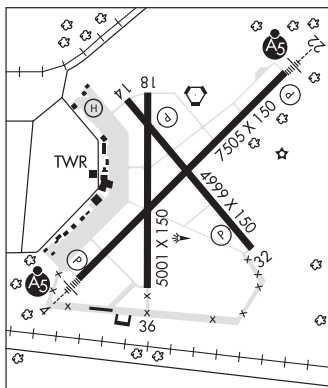
(L) VORTACW 117.2 MLU Chan 119 N32°31.01' W92°02.16' at fld. 76/3E. HIWAS.

SABAR NDB (LOMW) 392 ML N32°27.25' W92°06.26' 042° 4.8 NM to fld. 75/3E.

ILS 109.5 I-MLU Rwy 04. Class IB. LOM SABAR NDB. ILS and LOM unmonitored when ATCT clsd.

ILS 109.5 I-MZR Rwy 22. Class IT. Unmonitored when ATCT clsd. LOC unusable byd 20° right of course.

ASR (1200-0400Z‡)



MEMPHIS
H-6J, L-18F
IAP, AD

MOREHOUSE MEM (See BASTROP on page 83)

MOSSY N30°18.40' W93°11.77' NOTAM FILE CWF.

NDB (LOMW) 418 CW 150° 6.4 NM to Chennault Intl. 23/4E.

HOUSTON