

TALLULAH**SCOTT** (M80) 2 E UTC-6(-5DT) N32°24.98' W91°08.93'

84 B NOTAM FILE DRI

RWY 18-36: H3014X75 (ASPH) S-12 MIRL**RWY 36:** Thld dspcd 250'.**RWY 17-35:** 2400X130 (TURF)**RWY 35:** Acft.**SERVICE:** LGT Wind indicator lgt OTS indef. ACTIVATE MIRL Rwy 18-36—CTAF.**AIRPORT REMARKS:** Attended on call. For attendant call 318-282-7462. Aerobatic box on fld check NOTAMS. Numerous agricultural and ultralight ops at arpt. Rwy 36 dspcd thld daylight ops only. Acft parking apron 200' south of Rwy 35 thld.**AIRPORT MANAGER:** 318-282-7462**COMMUNICATIONS:** CTAF/UNICOM 122.8**CLEARANCE DELIVERY PHONE:** For CD ctc Memphis ARTCC at 901-368-8453.**RADIO AIDS TO NAVIGATION:** NOTAM FILE MLU.**MONROE (L) VORTACW** 117.2 MLU Chan 119 N32°31.01' W92°02.16' 094° 45.4 NM to fld. 76/3E. **HIWAS.****MEMPHIS**

L-18F

VICKSBURG TALLULAH RGNL (TVR)(KTVR) 9 E UTC-6(-5DT) N32°21.10' W91°01.66'

86 B TPA-1086(1000) NOTAM FILE TVR

RWY 18-36: H5002X100 (ASPH) S-60, D-75 MIRL**RWY 18:** REIL. PAPI(P4L)—GA 3.0° TCH 50'. Trees.**RWY 36:** SSALR. PAPI(P4L)—GA 3.0° TCH 50'. Trees.**RUNWAY DECLARED DISTANCE INFORMATION****RWY 18:** TORA-5002 TODA-5002 ASDA-5002 LDA-5002**RWY 36:** TORA-5002 TODA-5002 ASDA-5002 LDA-5002**SERVICE:** S4 FUEL 100LL, JET A LGT MIRL Rwy 18-36, REIL Rwy 18, SSALR Rwy 36 preset low ints dusk-dawn, to increase ints ACTIVATE—CTAF.**AIRPORT REMARKS:** Attended 1300-0100Z. For arpt attendant after hrs call 318-366-1615. For fuel after hrs call 318-366-1615. PAEW on arpt. Migratory birds invof arpt. Crop dusting activity 2 NM radius of arpt. Pilots in tfc pattern are requested to avoid over flight of Mound, LA 1/2 mile south and east of Rwy 36.**AIRPORT MANAGER:** 318-574-5841**WEATHER DATA SOURCES:** ASOS 118.525 (318) 574-4866.**COMMUNICATIONS:** CTAF/UNICOM 123.0**MEMPHIS CENTER APP/DEP CON** 132.5**GCO** 135.075 (DE RIDDER FSS)**CLEARANCE DELIVERY PHONE:** For CD ctc Memphis ARTCC at 901-368-8453.**RADIO AIDS TO NAVIGATION:** NOTAM FILE GWO.**MAGNOLIA (H) VORTACW** 113.2 MHz Chan 79 N32°26.04' W90°05.99' 265° 47.4 NM to fld. 407/1W.

TACAN AZIMUTH unusable:

240°-275° byd 30.0NM blo 2,000'

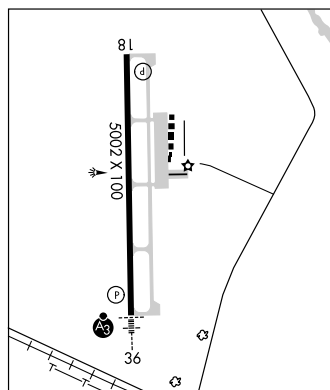
DME unusable:

240°-275° byd 30.0NM blo 2,000'

TALLULAH NDB (MHW/LOM) 344 TKH N32°14.72' W91°01.55' 357° 6.4 NM to fld. 79/2E. NOTAM FILE DRI.**ILS** 109.7 I-TVR Rwy 36. Class IE.**MEMPHIS**

H-6I, L-18F

IAP

**TENSAS PARISH** (See ST JOSEPH on page 116)**THE RED RIVER** (See COUSHATTA on page 86)