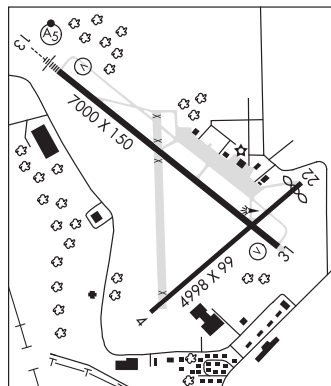


**GRENADA MUNI** (GNF)(KGNF) 3 N UTC-6(-5DT) N33°49.95' W89°47.89'

208 B NOTAM FILE GWO

**RWY 13-31:** H7000X150 (ASPH) S-60, D-200, 2S-175, 2D-300  
MIRL**RWY 13:** MALSR. VASI(V4L)—GA 3.0° TCH 52'.**RWY 31:** VASI(V4L)—GA 3.0° TCH 56'. Trees.**RWY 04-22:** H4998X99 (ASPH) S-60, D-200, 2S-175, 2D-300  
**RWY 04:** Trees.**RWY 22:** Thld dspcd 272'. Road.**SERVICE:** FUEL 100LL, JET A**AIRPORT REMARKS:** Attended Mon-Fri 1400-2300Z, Sat-Sun on call. Fuel after hrs call 662-307-0027 or 662-230-3646. Aerobatic acct 7,000' and below within 3 NM of arpt, dvalgt hrs. Migratory birds and deer invof arpt. Extensive agriculture opvs invof arpt SR-SS between Mar-Oct annually. Rwy 13 and 31 have 200' by 150' asph overrun. Rwy 04-22 markings badly faded. Rwy 04-22 asphalt is cracked and has depressions.**AIRPORT MANAGER:** 662-227-3440**WEATHER DATA SOURCES:** AWOS-3PT 118.025 (662) 227-3407.**COMMUNICATIONS:** CTAF/UNICOM 122.8**MEMPHIS CENTER APP/DEP CON** 128.5**GCO** 121.72 (GREENWOOD FSS)**CLEARANCE DELIVERY PHONE:** For CD ctc Memphis ARTCC at 901-368-8453.**RADIO AIDS TO NAVIGATION:** NOTAM FILE GWO.**SIDON (H) VORTAC** 114.7 SQS Chan 94 N33°27.83' W90°16.64' 044° 32.6 NM to fld. 127/3E.**MEMPHIS****H-61, L-18G****IAP****GULFPORT-BILOXI INTL** (GPT)(KGPT) P (ANG ARNG) 3 NE UTC-6(-5DT) N30°24.44'

W89°04.21'

29 B TPA—See Remarks LRA Class I, ARFF Index B NOTAM FILE GPT

**RWY 14-32:** H9002X150 (ASPH-CONC-GRVD) S-81, D-300, 2S-175, 2D-555, 2D/2D2-870 PCN 194F/A/W/T HIRL**RWY 14:** MALSR. PAPI(P4R)—GA 3.0° TCH 52'. RVR-T Trees.**RWY 32:** MALSR. PAPI(P4L)—GA 3.0° TCH 72'. RVR-T Tower.**RWY 18-36:** H4935X150 (ASPH-GRVD) S-20, 2D-115

PCN 147F/B/W/T MIRL

**RWY 18:** PAPI(P4R)—GA 3.0° TCH 47'. Tree.**RWY 36:** PAPI(P4L)—GA 3.0° TCH 50'. Trees.**ARRESTING GEAR/SYSTEM****RWY 14 BAK-14 BAK-12B(B)** (1800').**BAK-14 BAK-12B(B)** (1300'). **RWY 32****SERVICE:** S4 FUEL 100LL, JET A LGT When twr clsd ACTIVATE MALSR

Rwy 14 and 32; HIRL Rwy 14-32; MIRL Rwy 18-36—CTAF. MIRL

Rwy 18-36—not avbl when twr closed and Rwy 14-32 active.

**MILITARY—A-GEAR** BAK-14 avbl dur ANG OPS with 30 min PN. **JASU**6(A/M32A-86) 3(AM32A-60A) **FUEL** A+ (MIL) A (C228-701-0400).**OIL** O-128-133-148(Mil) **TRAN ALERT** Svc avbl prior coord.**AIRPORT REMARKS:** Attended continuously. 150' AGL crane 4600' N of

Rwy 18 thld. Numerous low flying fish spotter acct opr near shoreline

between Pascagoula and Gulfport SR-SS. Maverick pad apron area on N end of Twy C restricted to military acct use only.

TPA—829 (800) light single-engine; 1229 (1200) conventional; 1529 (1500) jets. Acft over 115,000 lbs are restricted

from 180° turns on Rwy 18-36. Acft with wingspan greater than 223' are restricted from opr on Twy C between Twy A

and AER 32. Civil acct with wingspan of 132' or greater and all air carrier acct must be escorted along Twy A north of Twy

C by gnd handling agent. Acft opr as scheduled or charter passenger svc shall not taxi on Twy A north of Twy B intersection

without escort from gnd handling agent or arpt authority. Acft over 155,000 lbs are restricted from using the N part of

Twy A at Rwy 18-36. Acft over 316,000 lbs are restricted from using the S part of Twy A between Twy C and Rwy 14-32.

Due to apron activity, acct with wingspan greater than 170' should be alert on Twy A between Twy C and Twy B. Taxilane

F20 between FBO and taxilane G clsd to acct with wingspan greater than 49'. Pole adj taxilane F20 not lgt.

**MILITARY REMARKS:** **RSTD** Military acct or acct supporting a mil mission with wingspan of 132' or greater must have an escort

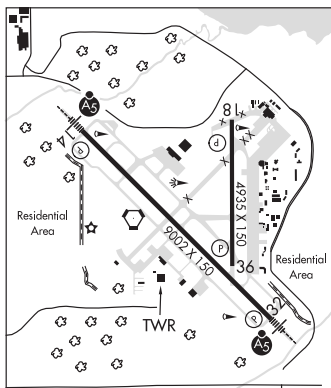
or coordinate taxi procedures with gnd handling agent prior to taxiing on Twy A. Power check pad between Rwy 18-36

and Twy A rstd to military acct only. C-5 acct parking rstd to 1 acct at a time due to twy width unless coordinated. **CAUTION****BASH** Phase I bird acct May-Sep. **BASH** Phase II in effect Apr-May and Aug-Oct. Ctc Afltd Mgmt, for current Bird WatchCond. **CSTMS/AG/IMG** Requestor of PPR responsible for notifying CSTMS 48 hr prior notice. **ANG** NO COMSEC stor. Combat

Readiness Training Center (CRTC) AM OPS opr 1300-2130Z; Mon; 1300-2230Z; Tues-Fri and Unit Trng Assembly

(UTA) wknds, normally first wknd of month; clsd holiday. 48 hr pn PPR rqr ctc CRTC AM ops. Ctc guard ops 15 min prior

to arr 377.800. DSN 363-6027, C228-214-6027, fax DSN 363-6031, C228-214-6031.

**NEW ORLEANS****H-7E, 8F, L-21C, 22G, GOMC****IAP AD**

CONTINUED ON NEXT PAGE

## CONTINUED FROM PRECEDING PAGE

**AIRPORT MANAGER:** 228-863-5951

**WEATHER DATA SOURCES:** ASOS 119.45 (228) 867-9937. HIWAS 109.0 GPT. LAWRS.

**COMMUNICATIONS:** CTAF 123.7 ATIS 119.45 UNICOM 122.95

RCO 122.1R 109.0T (GREENWOOD RADIO)

Ⓡ GULFPORT APP/DEP CON 124.6 (130°-309°) 127.5 (310°-129°) (1200-0500Z‡)

Ⓡ HOUSTON CENTER APP/DEP CON 127.65 (0500-1200Z‡)

TOWER 123.7 (1200-0500Z‡) GND CON 120.4

**AIRSPACE:** CLASS D svc 1200-0500Z‡; other times CLASS G.

TRSA svc ctc APP CON

**RADIO AIDS TO NAVIGATION:** NOTAM FILE GPT.

(L) VORTAC 109.0 GPT Chan 27 N30°24.41' W89°04.61' at fld. 25/2E. HIWAS.

TACAN AZIMUTH unusable:

195°-217°

266°-275° byd 12 NM

VOR unusable:

035°-086° blo 5,000'

293°-303°

BAYOU NDB (LOMW) 360 GP N30°29.14' W89°09.74' 136° 6.7 NM to fld. 83/2W.

ILS 110.9 I-GPT Rwy 14. Class IE. LOM BAYOU NDB. Unmonitored when ATCT clsd. Glideslope unusable byd 7° right of course.

ILS 108.3 I-UXI Rwy 32. Class IE. Unmonitored when ATCT clsd.

ASR (1200-0500Z‡)

**HANCO** N30°27.08' W89°27.33' NOTAM FILE HSA.

NDB (MHW) 221 HS 181° 5.0 NM to Stennis Intl. 94/2W.

NEW ORLEANS

L-21B, 22G, GOMC

**HARDY-ANDERS FLD NATCHEZ-ADAMS CO** (See NATCHEZ on page 153)

**HATTIESBURG BOBBY L CHAIN MUNI** (HBG)(KHBG) 4 SE UTC-6(-5DT) N31°15.90'

W89°15.17'

151 B NOTAM FILE HBG

RWY 13-31: H6094X150 (ASPH-GRVD) S-48, D-68, 2S-114,

2D-145 HIRL

RWY 13: REIL. PAPI(P4L)—GA 3.0° TCH 50'. Thld dsplcd 996'. Trees.

RWY 31: PAPI(P4L)—GA 3.0° TCH 44'. Trees.

**SERVICE:** S4 FUEL 100LL, JET A OX3 LGT ACTIVATE REIL Rwy 13;

HIRL Rwy 13-31—CTAF. PAPI Rwy 13 and Rwy 31 opr continuously.

**AIRPORT REMARKS:** Attended dalgt hours. Fuel 24 hr credit card svc avbl.

Run-on landings by skid helicopters are not allowed. Courtesy vehicle,

taxis, public bus (weekdays), and rental cars avbl.

**AIRPORT MANAGER:** (601) 544-8661

**WEATHER DATA SOURCES:** ASOS 135.425 (601) 544-2185.

**COMMUNICATIONS:** CTAF/UNICOM 122.8

HOUSTON CENTER APP/DEP CON 126.8

**CLEARANCE DELIVERY PHONE:** For CD ctc Houston ARTCC at 281-230-5622.

**RADIO AIDS TO NAVIGATION:** NOTAM FILE GWO.

EATON (L) VORTAC 110.6 LBY Chan 43 N31°25.12'

W89°20.26' 150° 10.2 NM to fld. 290/5E.

VORTAC unusable:

300°-000° byd 30 NM

VOR portion unusable:

111°-164° byd 10 NM blo 2,000'

241°-251°

TACAN unusable:

025°-035° byd 10 NM blo 3,000'

268°-274° byd 30 NM blo 5,000'

NEW ORLEANS

H-6J, L-21C, 22G

IAP

