

JACKSON—MEDGAR WILEY EVERS INTL (JAN)(KJAN) P (ANG) 5 E UTC-6(-5DT) N32°18.67' W90°04.55'

MEMPHIS
H-61, L-18G
IAP, DIAP, AD

346 B LRA Class I, ARFF Index C NOTAM FILE JAN MON Airport

RWY 16L-34R: H8500X150 (ASPH-GRVD) S-75, D-200, 2S-175,

2T-585, 2D-390, 2D/2D2-850 PCN 88 F/C/W/T HIRL CL

RWY 16L: ALSF2. TDZL. PAPI(P4L)—GA 3.0° TCH 71'. RVR-TMR Trees.

0.3% up.

RWY 34R: REIL. PAPI(P4R)—GA 3.0° TCH 66'. RVR-TMR Trees.

0.7% down.

RWY 16R-34L: H8500X150 (ASPH-GRVD) S-130, D-140, 2S-175,

2T-585, 2D-250, 2D/2D2-720 PCN 59 F/B/X/U HIRL CL

RWY 16R: REIL. PAPI(P4L)—GA 3.0° TCH 80'. RVR-R 0.4% up.

RWY 34L: MALSR. TDZL. RVR-T Trees.

SERVICE: S4 FUEL 100LL, JET A, A+ **OX1**, 2, 3, 4 **LGT** When twr clsd

HIRL Rwy 16L-34R and HIRL Rwy 16R-34L on continuously step 1.

ACTIVATE MALSR Rwy 34L, HIRL Rwy 16L and Rwy 34R, HIRL Rwy

16R and 34L, REIL Rwy 34R—CTAF. ACTIVATE REIL Rwy

16R—120.7. Rwy 16L ALSF-2 preset on med ints exc sequenced

flashing lgts not avbl. **MILITARY—JASU** 8(A/M32A-86D) 3(MC-1A) **FUEL**

A+, A (C601-939-9366) (NC-100LL)

AIRPORT REMARKS: Attended continuously. Weight bearing capacity for Rwy

16L-34R and Rwy 16R-34L is 2T-585 to accommodate C-17 acft. Be

alert when crossing AER 16R. Hold area 1 and 2 comsn on term apron btn Twy B3 and Twy B5. Ldg fee for

non-commercial acft over 25,500 pounds, fee waived for larger non-scheduled acft with sufficient fuel purchase. U.S.

Customs user fee arpt.

MILITARY REMARKS: See FLIP AP/1 supplementary arpt remark. **ANG** Official business only. All tran acft no later than 48 hr PPR,

ctc Base Ops. Tran acft use FBO for svc. Base Ops opr weekdays 1300-0230Z†, DSN 828-8372, C601-405-8372, fax

DSN 828-8100, C601-405-8100. Command Post opr weekdays 1200-0630Z†, DSN 828-8350, C601-405-8350.

Military acft use Twy C7 to access the FBO apron unless otherwise directed by twr.

AIRPORT MANAGER: 601-939-5631

WEATHER DATA SOURCES: ASOS (601) 932-2822 LLWAS.

COMMUNICATIONS: CTAF 120.9 ATIS 121.05 UNICOM 122.95

RCO 122.2 255.4 (GREENWOOD RADIO)

Ⓡ **APP/DEP CON** 123.9 317.7 (333°-152°) 125.25 319.2 (153°-332°)(1200-0500Z‡)

Ⓡ **MEMPHIS CENTER APP/DEP CON** 132.5 259.1 (0500-1200Z‡)

TOWER 120.9 352.0 (1200-0500Z‡) **GND CON** 121.7 348.6

ANG COMD POST 264.6 (172nd AW CP)

AIRSPACE: CLASS C svc ctc **APP CON** svc 1200-0500Z‡; other times CLASS E.

VOR TEST FACILITY (VOT) 111.0

RADIO AIDS TO NAVIGATION: NOTAM FILE GWO.

MAGNOLIA (H) VORTACW 113.2 MHz Chan 79 N32°26.04' W90°05.99' 172° 7.5 NM to fld. 407/1W.

TACAN AZIMUTH unusable:

240°-275° byd 30.ONM blo 2,000'

DME unusable:

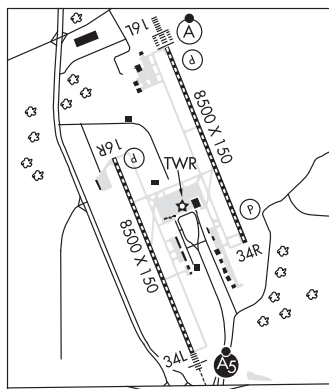
240°-275° byd 30.ONM blo 2,000'

ALLEN NDB (LOMW) 365 JA N32°24.75' W90°07.17' 161° 6.5 NM to fld. 330/1W. NOTAM FILE JAN.

ILS 110.5 I-JAN Rwy 16L. Class IIIE. LOM ALLEN NDB. Unmonitored 0500-1200Z‡ radar - see terminal flip for radar minima.

ILS 109.3 I-FRL Rwy 34L. Class IB. Unmonitored. Localizer restricted byd 25° left and right of course.

ASR (1200-0500Z‡)



JAMES H EASOM FLD (See NEWTON on page 153)

JOE WILLIAMS NOLF (NJW)(KNJW) N UTC-6(-5DT) N32°47.94' W88°50.07'

MEMPHIS
H-61, L-18G

AIRSPACE: CLASS D svc 1400-2330Z‡ Mon-Fri; other times CLASS G.

ASR (1200-0500Z‡)

JOHN BELL WILLIAMS (See RAYMOND on page 159)