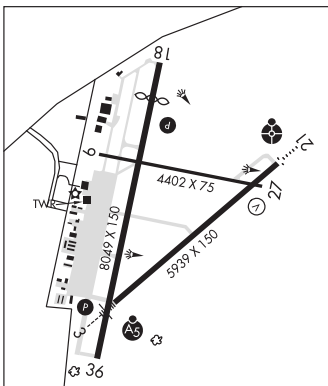


**SAN ANGELO RGNL/MATHIS FLD** (SJT)(KSJT) 7 SW UTC-6(-5DT) N31°21.47' W100°29.78'

**SAN ANTONIO**  
H-6G, L-19B  
IAP, AD

1919 B Class I, ARFF Index B NOTAM FILE SJT

**RWY 18-36:** H8049X150 (ASPH-GRVD) S-70, D-100, 2S-127  
PCN 67 F/A/W/T MIRL  
**RWY 18:** REIL. PAPI(P4L)—GA 3.0° TCH 45'. Thld dspclcd 889'. Road.  
**RWY 36:** PAPI(P4L)—GA 3.0° TCH 48'.  
**RWY 03-21:** H5939X150 (ASPH-GRVD) S-70, D-100, 2S-127  
PCN 115F/A/W/T HIRL 0.4% up SW  
**RWY 03:** MALS. RVR-T  
**RWY 21:** ODALS. VASI(V4L)—GA 3.0° TCH 52'. RVR-R  
**RWY 09-27:** H4402X75 (ASPH) S-70, D-100, 2S-127  
PCN 39 F/A/W/T MIRL  
**RWY 09:** Road.  
**RWY 27:** Road.



**RUNWAY DECLARED DISTANCE INFORMATION**

**RWY 03:** TORA-5939 TODA-5939 ASDA-5939 LDA-5939  
**RWY 09:** TORA-4402 TODA-4402 ASDA-4402 LDA-4402  
**RWY 18:** TORA-8049 TODA-8049 ASDA-8049 LDA-7160  
**RWY 21:** TORA-5939 TODA-5939 ASDA-5939 LDA-5939  
**RWY 27:** TORA-4402 TODA-4402 ASDA-4402 LDA-4402  
**RWY 36:** TORA-7160 TODA-7160 ASDA-7160 LDA-7160

**SERVICE:** S4 FUEL 100LL, JET A, B+ OX 1, 2, 4 LGT When twr clsd  
 MIRL Rwy 18-36 preset low ints, to incr ints and ACTIVATE HIRL Rwy 03-21, MIRL Rwy 09-27, MALS. Rwy 03, ODALS Rwy 21, REIL Rwy 18 and PAPI Rwy 18 and Rwy 36—118.3.

**AIRPORT REMARKS:** Attended 1200-0400Z†. Fee for fuel after hrs call 325-656-1836/1837. PPR 12 hrs for unscheduled air carrier ops with over 30 pax seats, call arprt mgr 325-659-6409, ext 3.

**AIRPORT MANAGER:** 325-659-6409

**WEATHER DATA SOURCES:** ASOS (325) 949-6686

**COMMUNICATIONS:** CTAF 118.3 ATIS 128.45 UNICOM 122.95

RCO 122.25 (SAN ANGELO RADIO)

Ⓡ APP/DEP CON 125.35 (1200-0300Z†)

FORT WORTH CENTER APP/DEP CON 126.15 (0300-1200Z†)

TOWER 118.3 (1300-0300Z†) GND CON 121.9

**AIRSPACE:** CLASS D svc 1300-0300Z†; other times CLASS E.

**RADIO AIDS TO NAVIGATION:** NOTAM FILE SJT.

(H) VORTACW 115.1 SJT Chan 98 N31°22.50' W100°27.29' 234° 2.4 NM to fld. 1890/10E.

WOOLE NDB (LOMW) 356 SJ N31°16.79' W100°34.57' 036° 6.2 NM to fld. 1916/5E.

ILS/DME 109.7 I-SJT Chan 34 Rwy 03. Class IE. LOM WOOLE NDB. ILS/DME unmonitored when ATCT clsd.

Glideslope unusable for coupled apch blw 2,685' MSL.

ASR (1200-0600Z†)

**SAN ANTONIO**

**BOERNE STAGE FLD** (5C1) 20 NW UTC-6(-5DT) N29°43.39' W98°41.67'

**SAN ANTONIO**  
L-19C  
IAP

1384 B NOTAM FILE SJT

**RWY 17-35:** H5006X60 (ASPH) LIRL  
**RWY 17:** Thld dspclcd 629'. Fence. Rgt tfc.  
**RWY 35:** Thld dspclcd 1086'. Trees.

**SERVICE:** S4 FUEL 100LL, JET A

**AIRPORT REMARKS:** Attended continuously. Rwy 35: +35' lgtd power poles at 125' and 300' from thld; 125' left of centerline. South rwy exit clsd indef, backtaxi to exit rwy. Glider activity on and invof arprt. NS ABTMT procedures in effect ctc arprt mgr 830-981-2345. All ldg turbine acct must be stage 3 or better. No touch and go, stop and go, or low apchs. Vehicles driving on and across rwy.

**AIRPORT MANAGER:** 830-981-2345

**WEATHER DATA SOURCES:** AWOS-3 118.725 (830) 755-9099.

**COMMUNICATIONS:** CTAF/UNICOM 123.0

SAN ANTONIO APP/DEP CON 125.1

**CLEARANCE DELIVERY PHONE:** For CD ctc San Antonio apch at 210-805-5516.

**RADIO AIDS TO NAVIGATION:** NOTAM FILE SAT.

SAN ANTONIO (H) VORTACW 116.8 SAT Chan 115 N29°38.64' W98°27.68' 283° 13.1 NM to fld. 1160/8E. HIWAS.

**COMM/NAV/WEATHER REMARKS:** UNICOM unmonitored.

