

KESTREL AIRPARK (1T7) 23 N UTC—6(—5DT) N29°48.71' W98°25.56'
 1261 NOTAM FILE SJT
Rwy 12—30: H3000X40 (ASPH) LIRL(NSTD) 1.4% up NW

**SAN ANTONIO
 L-19C**

Rwy 12: Trees.

Rwy 30: Road. Rgt tfc.

SERVICE: S4 **FUEL** 100LL **OX 1** **LGT** Rwy 12—30 NSTD LIRL, Rwy 12 lgts not at thld.

AIRPORT REMARKS: Attended continuously. Fuel self svc for assistance call arpt manager at 830-522-1885. Deer on and invof rwy. Rwy 30 rises rapidly at north end. Touch and go ldgs and low apchs prohibited for tran and coml acft, tkfs rstcd btn 0400-1200Z±. No helicopter training OPS allowed. Rwy 12-30 markings are faded.

AIRPORT MANAGER: (830) 522-1885

COMMUNICATIONS: CTAF/UNICOM 122.975

CLEARANCE DELIVERY PHONE: For CD ctc San Antonio apch at 210-805-5516.

RADIO AIDS TO NAVIGATION: NOTAM FILE SAT.

SAN ANTONIO (H) VORTACW 116.8 SAT Chan 115 N29°38.64' W98°27.68' 002° 10.2 NM to fld. 1160/8E.
HIWAS.

SAN ANTONIO INTL (SAT)(KSAT) 7 N UTC—6(—5DT) N29°32.04' W98°28.14'
 809 B LRA Class I, ARFF Index C NOTAM FILE SAT MON Airport

**SAN ANTONIO
 H-7B, L-19C
 IAP AD**

Rwy 04—22: H8505X150 (CONC-GRVD) S-95, D-190, 2S-175,
 2D-270 PCN 91 R/B/W/T HIRL CL

Rwy 04: MALS. PAPI(P4R)—GA 3.0° TCH 79'. RVR-T Pole.
 0.3% down.

Rwy 22: REIL. PAPI(P4L)—GA 3.0° TCH 85'. RVR-R 0.5% up.

Rwy 13R—31L: H8502X150 (CONC-GRVD) S-95, D-190, 2D-270
 PCN 86 R/B/W/T HIRL CL

Rwy 13R: ALSF2. TDZL. PAPI(P4L)—GA 3.0° TCH 75'. RVR-TMR

Rwy 31L: MALS. PAPI(P4L)—GA 3.0° TCH 82'. RVR-TMR Bldg.

Rwy 13L—31R: H5519X100 (ASPH) S-59, D-120 PCN 61 F/C/W/T
 MIRL

Rwy 13L: REIL. PAPI(P4L)—GA 3.0° TCH 40'.

Rwy 31R: REIL. PAPI(P4L)—GA 3.0° TCH 60'.

RUNWAY DECLARED DISTANCE INFORMATION

Rwy 04: TORA-8505 TODA-8505 ASDA-8505 LDA-8505

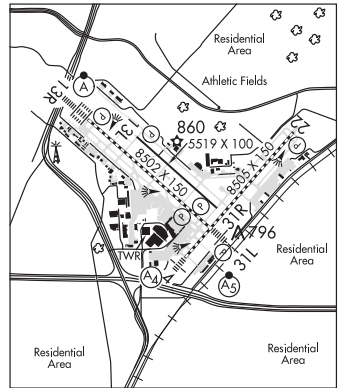
Rwy 13L: TORA-5519 TODA-5519 ASDA-5519 LDA-5519

Rwy 13R: TORA-8502 TODA-8502 ASDA-8502 LDA-8502

Rwy 22: TORA-8505 TODA-8505 ASDA-8505 LDA-8505

Rwy 31L: TORA-8502 TODA-8502 ASDA-8502 LDA-8502

Rwy 31R: TORA-5519 TODA-5519 ASDA-5519 LDA-5519



SERVICE: S4 **FUEL** 100LL, JET A **OX 1, 2, 3, 4**

AIRPORT REMARKS: Attended continuously. Numerous flocks of birds invof arpt. Glider/soaring ops aprx 17 miles northwest of arpt dur VFR. Rwy 13L-31R not avbl part 121 for air carrier ops. Work in progress scheduled maintenance on and along twys and ramps areas at various times. Aerodrome all sfc work in progress for current info ctc ops 210-207-3433. Arpt restricted to acft with wingspan greater than 171', PPR with 24hr OPS 210-207-3433. Required for authorization. PPR with arpt ops for acft powering back from terminal gates. All acft after ldg on Rwy 13R-31L exiting southwest bound on Twy D to make 90° turn on Twy G to avoid newly laid unusable sfc. Acft taxiing on Rwy 04 northeast bound look for hold short to Rwy 31L. Acft taxiing on Twy N southwest bound look for hold short to Rwy 31R. Apron East Cargo Ramp intersection of Rwy 04-22 and Twy D aircraft are requested to apply the minimum thrust when crossing the rwy to avoid damage due to jet blast. The following twys are not avbl for acft 59,000 lbs or over: Twy A and Twy J north of Rwy 13R-31L, Twy M and Twy P, Twy H northwest of Twy Z and Twy E east of Rwy 04-22. Twy R btn apch end Rwy 13L and Twy D clsd to acft more than 99600 lb. Compass deviation may occur at the northwest portion of Twy R due to rebar reinforced conc bridge located under the twy. Inner ramp taxi lane north of Terminal A and B is clsd to acft with wingspan greater than 135'. Acft at Terminal A and B advise gnd ctl prior to push. Twy L clsd northbound. Twys L and B clsd to acft with wingspans greater than 118' exiting Rwy 31L. Twy D non-movement area from Twy N to 500' west of Twy N. Twy S btn apch end Rwy 13L and Rwy 13R-31L clsd to acft wingspan more than 100'. Twy R between apch end Rwy 13L and Twy D clsd to acft wingspan more than 100'. Twy Z clsd to acft with wingspan greater than 118'. A barricaded pavement elev chg exists along the eastern side of the west ramp. Frequent rubber accumulation northwest 2500' Rwy 13R-31L. NS ABTMT Noise sensitive areas exist on all sides of arpt, at pilots discretion climb as quickly and quietly as safely possible on departure and use consideration when flying over populated areas by minimizing flt and high pwr settings. Foreign mil acft with wingspans less than 100' must report to general aviation ramp federal inspection station for cstm processing, ctc arpt mgmt at 210-207-3433. Military aircraft: Departing and arriving aircraft will use minimum power settings consistent with aircraft flight manuals, afterburner takeoff is prohibited unless required for safety of flight. Engine run-ups are permitted btn 1200-0500Z±. Gnd run-up enclosure avbl 24 hrs. Terminal Gates A1, A5, A6, A7 and A8 use only with PPR call ops 210-207-3433. C130 and C17 type acft must park on west ramp to clear cstm. All intl general aviation clear U.S. Cstm at North Fixed Base Operator Ramp east side, call U.S. CSTMS 210-821-6965 upon arr. Flight Notification Service (ADCUS) available. NOTE: See Special Notices—Continuous Power Facilities.

CONTINUED ON NEXT PAGE

