

BRISTOL/JOHNSON/KINGSPORT

TRI-CITIES (TRI)(KTRI) 12 SW UTC-5(-4DT) N36°28.51' W82°24.44'

1519 B Class I, ARFF Index B NOTAM FILE TRI

RWY 05-23: H8000X150 (ASPH-GRVD) S-112, D-185, 2S-175,

2D-336 PCN 44 F/A/X/T HIRL CL

RWY 05: REIL. PAPI(P4L)—GA 3.0° TCH 55'. RVR-TR Trees. 0.4% up.

RWY 23: ALSF2. TDZL. PAPI(P4R)—GA 3.0° TCH 55'. RVR-TR Trees. 0.4% down.

RWY 09-27: H4442X150 (ASPH) S-21.5 PCN 6 F/B/X/T MIRL

RWY 27: REIL. PAPI(P4L)—GA 3.0° TCH 32'. Thld displcd 127'.

RUNWAY DECLARED DISTANCE INFORMATION

RWY 05: TORA-8000 TODA-8000 ASDA-8000 LDA-8000

RWY 09: TORA-4442 TODA-4442 ASDA-4320 LDA-4320

RWY 23: TORA-8000 TODA-8000 ASDA-8000 LDA-8000

RWY 27: TORA-4442 TODA-4442 ASDA-4183 LDA-4056

SERVICE: S4 FUEL 100LL, JET A OX 1, 2 LGT PAPI Rwy 27 unavbl when twr clsd.

AIRPORT REMARKS: Attended continuously. U.S. CSTMS user fee arpt.

AIRPORT MANAGER: (423) 325-6001

WEATHER DATA SOURCES: ASOS 118.25 (423) 279-0363. LLWAS.

COMMUNICATIONS: CTAF 119.5 ATIS 118.25 UNICOM 122.95

BRISTOL RCO 122.2 (NASHVILLE RADIO)

Ⓡ **TRI CITY APP/DEP CON** 125.5 (228°-046°) 134.425 (047°-227°) (1100-0500Z‡)

Ⓡ **ATLANTA CENTER APP/DEP CON** 127.85 (0500-1100Z‡)

TRI CITY TOWER 119.5 (1100-0500Z‡) **GND CON** 121.7

AIRSPACE: CLASS D svc 1100-0500Z‡; other times CLASS E.

TRSA svc ctc **APP CON**

RADIO AIDS TO NAVIGATION: NOTAM FILE BNA.

HOLSTON MOUNTAIN (L) VORTAC 114.6 HNV Chan 93 N36°26.22' W82°07.78' 284° 13.6 NM to fld. 4321/4W.

VOR unusable.

076°-126° byd 17 NM blo 8,500'

171°-178° byd 27 NM blo 10,000'

171°-178° within 27 NM blo 8,500'

260°-265° byd 36 NM blo 8,500'

BOOIE NDB (MHW/LOM) 221 BO N36°23.92' W82°29.78' 050° 6.3 NM to fld. 1563/7W. NOTAM FILE TRI.

NDB ummonitored when ATCT closed

MOCCA NDB (LOMW) 299 TR N36°33.33' W82°19.07' 229° 6.5 NM to fld. 1779/7W. NOTAM FILE TRI.

ILS 111.5 I-BON Rwy 05. Class IB. LOM BOOIE NDB. LOC unusable and NDB/LOM unmonitored when ATCT clsd.

Glideslope unusable byd 5° left and right of course. Glideslope autcouple not applicable blo 2,200 MSL. No coupled approached below 2,200'. LOC unusable byd 27° left and right of course.

ILS 109.9 I-TRI Rwy 23. Class IIE. LOM MOCCA NDB. Unmonitored when ATCT closed. LOC unusable byd 010° right of course

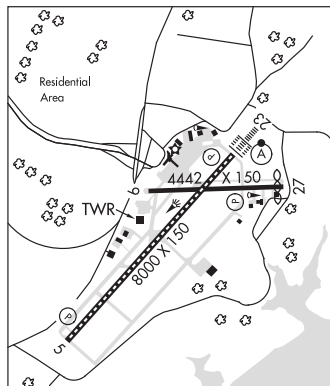
BURWI N35°27.69' W86°14.50' NOTAM FILE BNA.

NDB (MHW/LOM) 332 ULH 186° 4.9 NM to Tullahoma Rgnl Arpt/Wm Northern Fld. 810/3W. NDB unmonitored 0000-1400Z‡. SHUTDOWN.

CINCINNATI

H-9B, 12H, L-25C

IAP, AD



ATLANTA

L-16J