

**LUIS MUNOZ MARIN INTL** (SJU)(TJSJ) P 3 SE UTC-4 N18°26.36' W66°00.13'

**PUERTO RICO-VIRGIN ISLANDS**

10 B LRA Class I, ARFF Index D NOTAM FILE TJSJ

H-2G, L-5C, 6G, A-3G

**RWY 08-26:** H10400X193 (ASPH-GRVD) S-100, D-200, 2D-350

IAP, AD

PCN 86 R/C/W/T HIRL

**RWY 08:** MALSR. PAPI(P4L)—GA 3.0° TCH 70'. Thld dsplcd 400'. Tree. Rgt tfc.

**RWY 26:** REIL. Thld dsplcd 400'. Tree.

**RWY 10-28:** H8016X150 (CONC-GRVD) S-100, D-200, 2D-350 PCN 68 R/C/W/T HIRL

**RWY 10:** MALSR. PAPI(P4L)—GA 3.0° TCH 53'. Tree. Rgt tfc.

**RWY 28:** PAPI(P4L)—GA 3.0° TCH 53'. Trees.

**RUNWAY DECLARED DISTANCE INFORMATION**

**RWY 08:** TORA-9784 TODA-10400 ASDA-9784 LDA-9384

**RWY 10:** TORA-8016 TODA-8016 ASDA-8016 LDA-8016

**RWY 26:** TORA-8128 TODA-10400 ASDA-9600 LDA-9600

**RWY 28:** TORA-8016 TODA-8016 ASDA-8016 LDA-8016

**SERVICE:** S4 FUEL 100, 115, JET A+, A++

**AIRPORT REMARKS:** Attended continuously. FBO/Gnd handler must submit

72 hrs PPR for all mil acft by phone to 787-253-0979. Twy S btn

Twy S2 and Twy S5 clsd, lgtd and barricaded. Twy N is under

construction. Please, ctc arpt ops at 787-253-0979 for further

details and restrictions. Engine run-ups prohibited on gates area. Acft

180° turns on twys rqrs OPS coord. Apron 12 avbl for general aviation acft only. Twy J btn J1 and J5 (not incl J5) clsd to

acft with greater than 118' wingspan. All pvt and corporate acft must ctc arpt OPS, before arrival, for FBO's and ground

handling info at 787-253-0979. Ldg fee. Flight Notification Service (ADCUS) avbl. NOTE: See Special

Notices—Continuous Power Facilities.

**MILITARY REMARKS: RSTD** Inbound acft originating from OCONUS with a PPR for Muniz ANGB apn must clear Customs and Border Protection at civ side. Prior coord must be made with ANG AMOPS, phone 740-9629 at least one business day prior to arrival. Reduced wingtip clnc for wide body acft southwest side of Muniz ANGB apn due to temporary mobile obst.

**ANG Base OPS 1130-2000Z** Mon-Fri, clsd wkend and hol. Caution: unlighted rolling gate at entrance of Muniz ANGB

apron; gate must be fully extended prior to acft transition into ANG apron. Muniz ANGB apron hangar obstruction lgts

partially OTS.

**AIRPORT MANAGER:** (787) 289-7240

**WEATHER DATA SOURCES:** ASOS (787) 791-6500 LLWAS. TDWR.

**COMMUNICATIONS:** D-ATIS 125.8 UNICOM 123.0

SAN JUAN RCO 122.2 123.65 126.7 (SAN JUAN RADIO)

④ SAN JUAN APP/DEP CON 119.4 (WEST & SW) 120.9 (NORTH & EAST)

SAN JUAN TOWER 132.05 GND CON 121.9 PRE TAXI CLNC/CLNC DEL 126.4

CPDLC (LOGON KUSA)

**AIRSPACE:** CLASS C svc ctc APP CON.

**RADIO AIDS TO NAVIGATION:** NOTAM FILE TJSJ.

SAN JUAN (H) VORTACW 114.0 SJU Chan 87 N18°26.78' W65°59.37' at fld. 6/11W.

VOR unusable:

120°-164° byd 10 NM blo 9,000'

165°-260° byd 28 NM blo 5,000'

TACAN AZIMUTH unusable:

120°-164° byd 10 NM blo 9,000'

165°-260° byd 28 NM blo 5,000'

DME unusable:

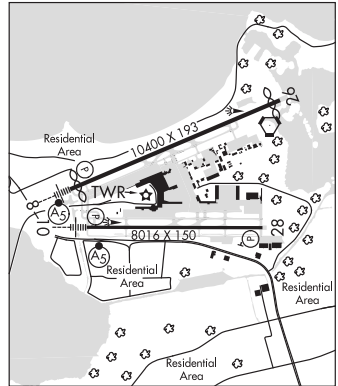
120°-164° byd 10 NM blo 9,000'

165°-260° byd 28 NM blo 5,000'

**PATTY NDB (MHW/LOM)** 330 SJ N18°24.53' W66°05.37' 081° 5.3 NM to fld. 67/11W. NOTAM FILE SJU.

ILS 110.3 I-SJU Rwy 08. Class IA. LOM PATTY NDB. Glideslope unusable blo 180'.

ILS/DME 109.7 I-CLA Chan 34 Rwy 10. Class IB.



**SAN JUAN** N18°26.78' W65°59.37' NOTAM FILE TJSJ.

**PUERTO RICO-VIRGIN ISLANDS**

(H) VORTACW 114.0 SJU Chan 87 at Luis Munoz Marin Intl. 6/11W.

H-2F L-5C, 6G

VOR unusable:

120°-164° byd 10 NM blo 9,000'

165°-260° byd 28 NM blo 5,000'

TACAN AZIMUTH unusable:

120°-164° byd 10 NM blo 9,000'

165°-260° byd 28 NM blo 5,000'

DME unusable:

120°-164° byd 10 NM blo 9,000'

165°-260° byd 28 NM blo 5,000'

RCO 122.2 123.65 126.7 (SAN JUAN RADIO)